

Kuroda Seiki 黒田 清輝

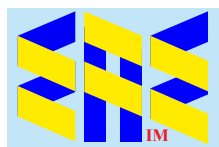
(1866-1924)



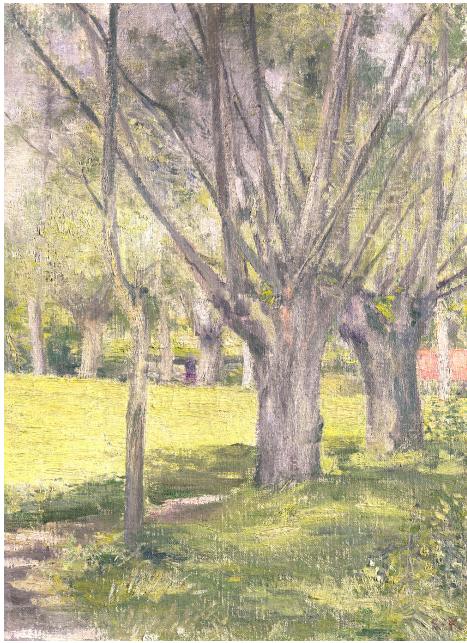
(c1920)



Hakubakai Coterie in Paris (1900)



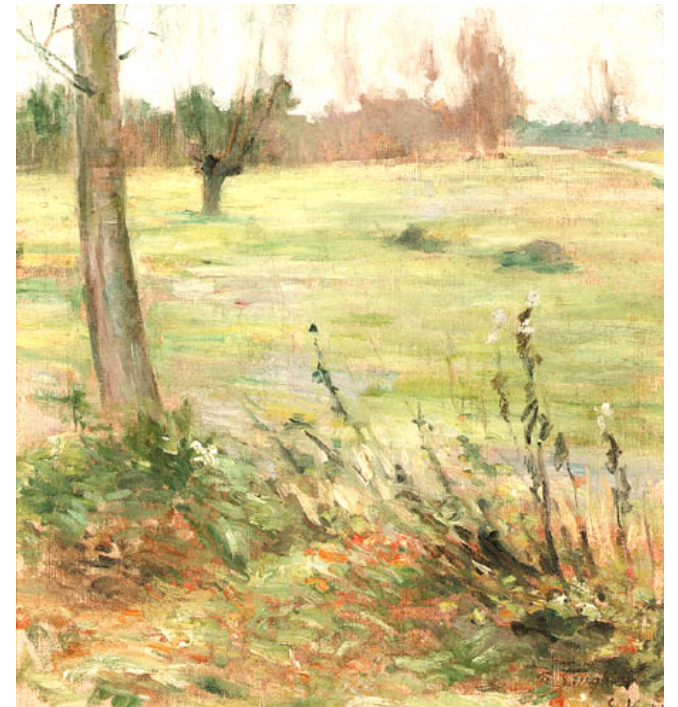
Compiled by Malcolm A Moore



Poplars (1889)
Tokyo National Museum



Defoliation (1891) NMMA



Fields (c1890) CP



My Friend Griffin (1889)
Kuroda Memorial Hall



Fields at Grez (1890) Kuroda Memorial Hall



Yellow-leafed Poplars (1891) Iwami Art Museum



Woman Sewing (1890)
Ishibashi Museum of Art



Woman Reading (c1890) Tokyo National Museum



Girl of Bréhat (1891) Artizon Museum



Knitting (1890) Kuroda Memorial Hall



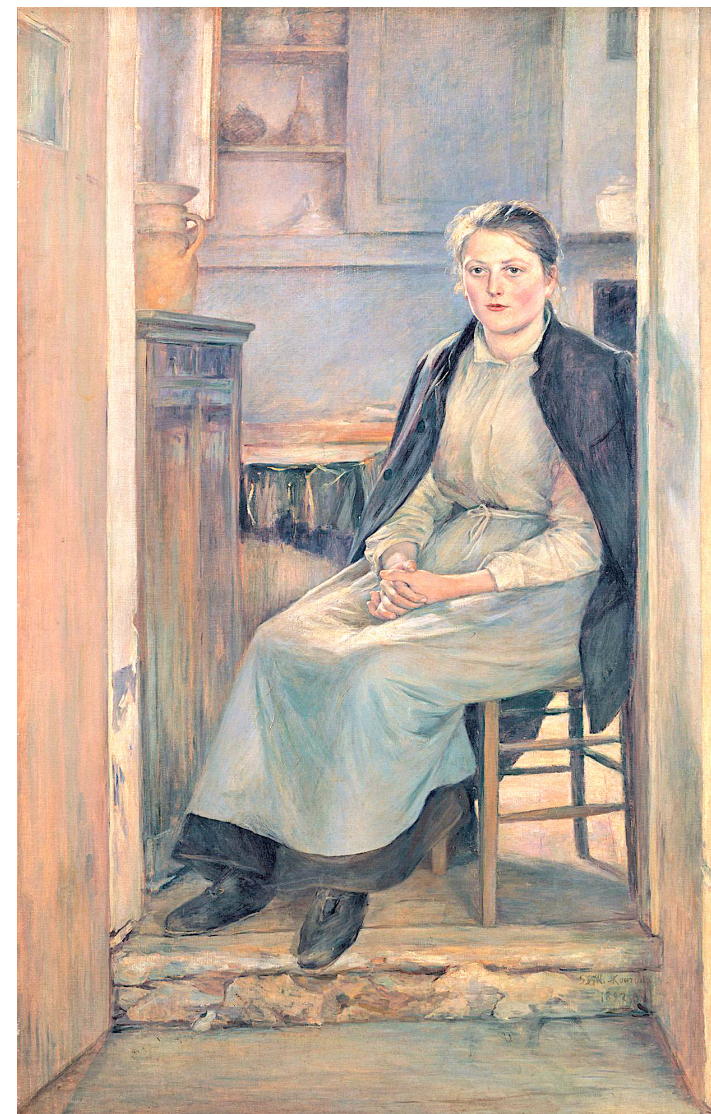
Artist's Studio (1890)
Kagoshima City Museum of Art



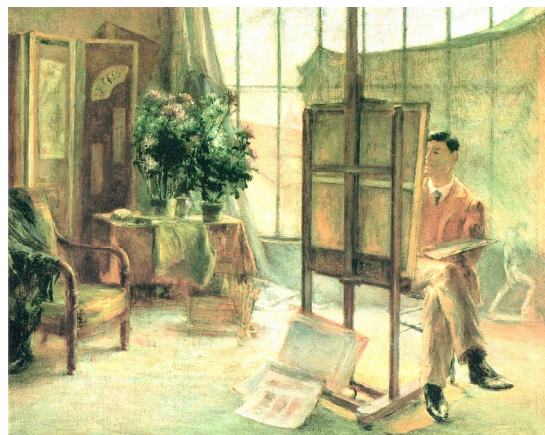
The Kitchen (1891) Kuroda Memorial Hall



Woman Holding a Mandolin
(1891) Tokyo National Museum



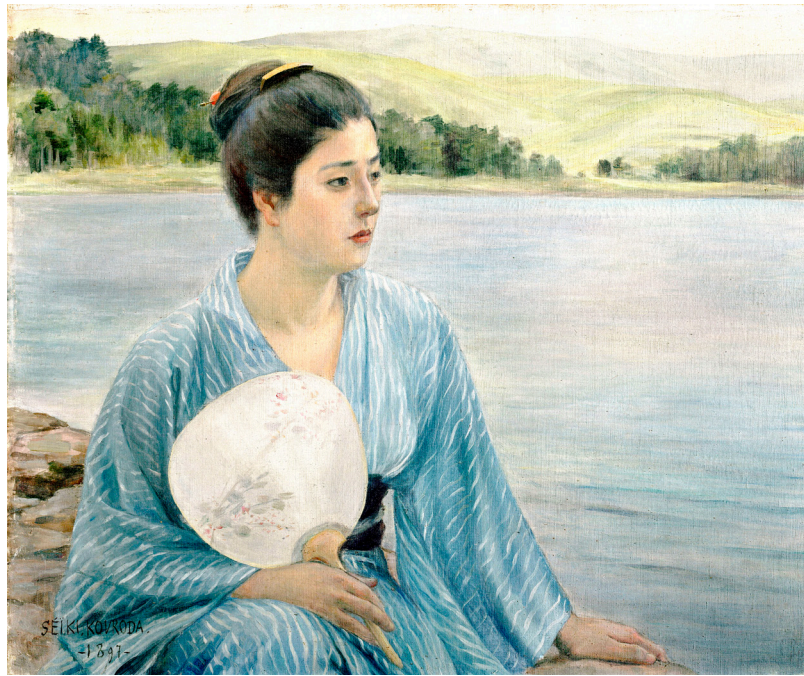
Kitchen (1892) CP



Kume Keiichiro in his Studio
(1891) Kume Museum of Art



Chrysanthemums and Western Women (1892) CP



Lakeside (1897) Kuroda Memorial Hall



Gathering Chestnuts (1917)
Kuroda Memorial Hall

Maiko (1893)
Tokyo National
Museum



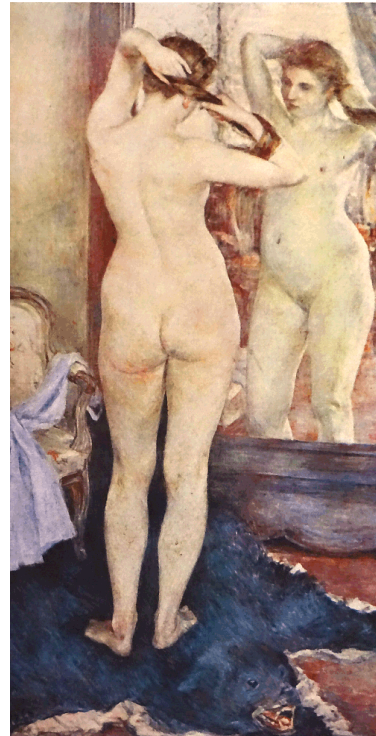
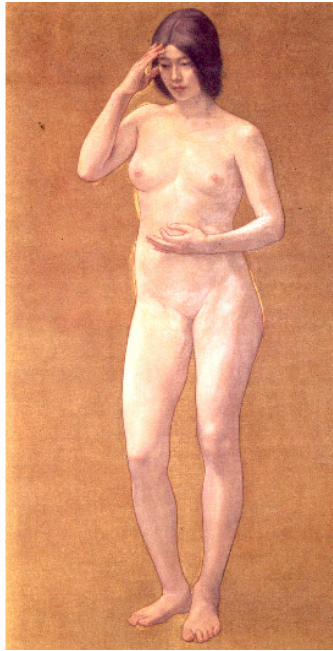
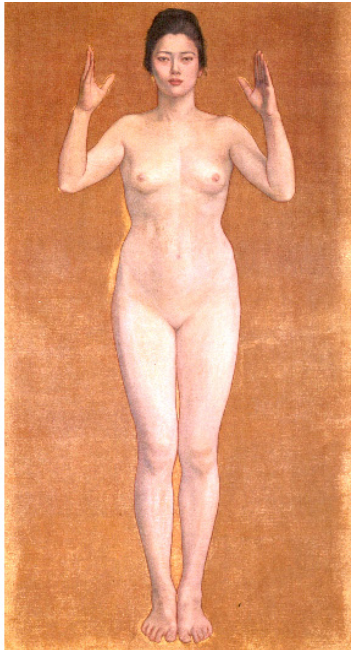
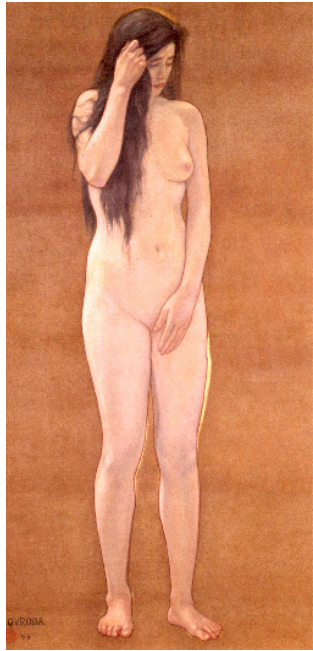
Nap
(1894)
Kuroda
Memorial
Hall



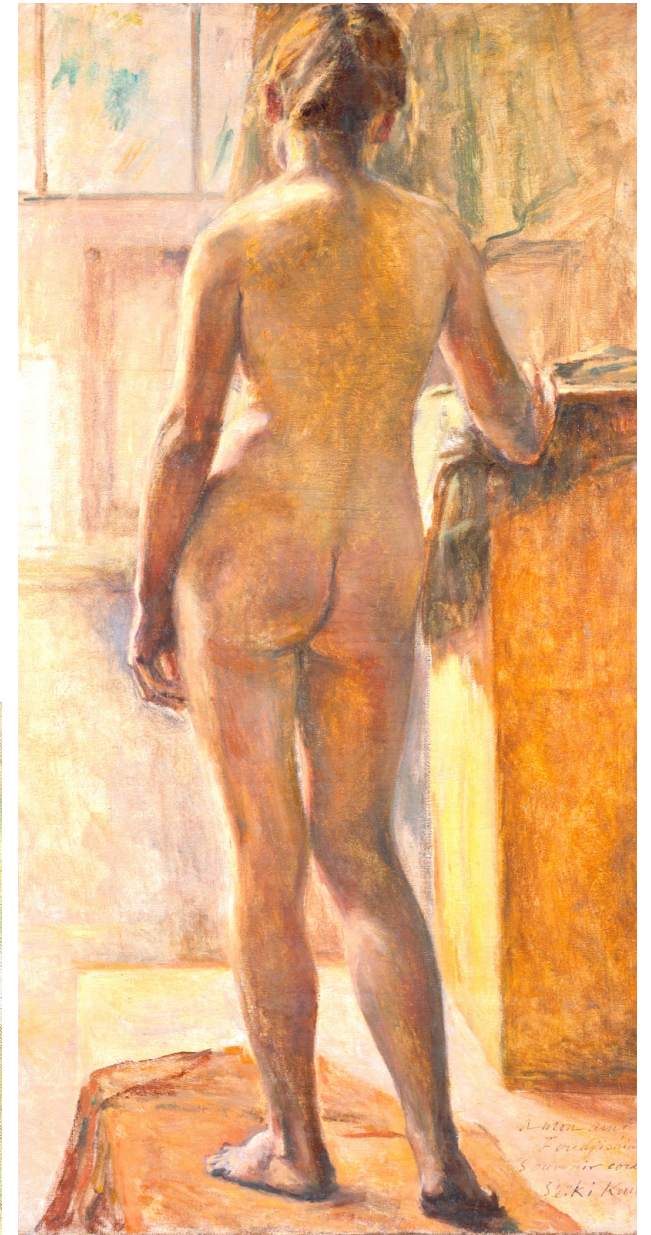
Sunbeams (1914)
Kuroda Memorial Hall



Under the Shade of a Tree (1898) Woodone Museum of Art

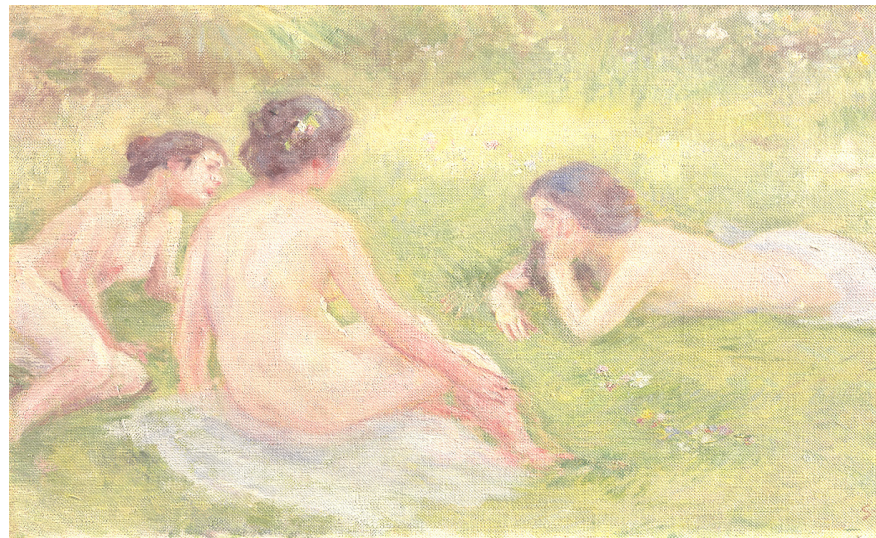


Morning Toilette (1893) Destroyed



Female Nude (1904) CP

**Wisdom, Impression, Sentiment
(c1897) Kuroda Memorial Hall**



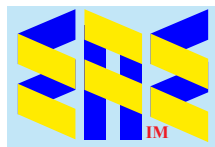
Study for Flowering Field (1907) Kuroda Memorial Hall

Nude (1897) Iwami Art Museum

Grateful acknowledgement is made to Wikipedia and Wikipedia Commons and all institutions and private individuals providing high quality access to copies of paintings in the public domain in countries where the copyright term is the author's life plus 70 years or fewer.



eaeinternal.com



EurAsian Education (Internal)