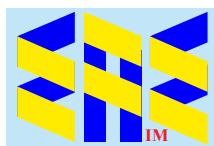


Paul Gustav Fischer

(1861-1932)



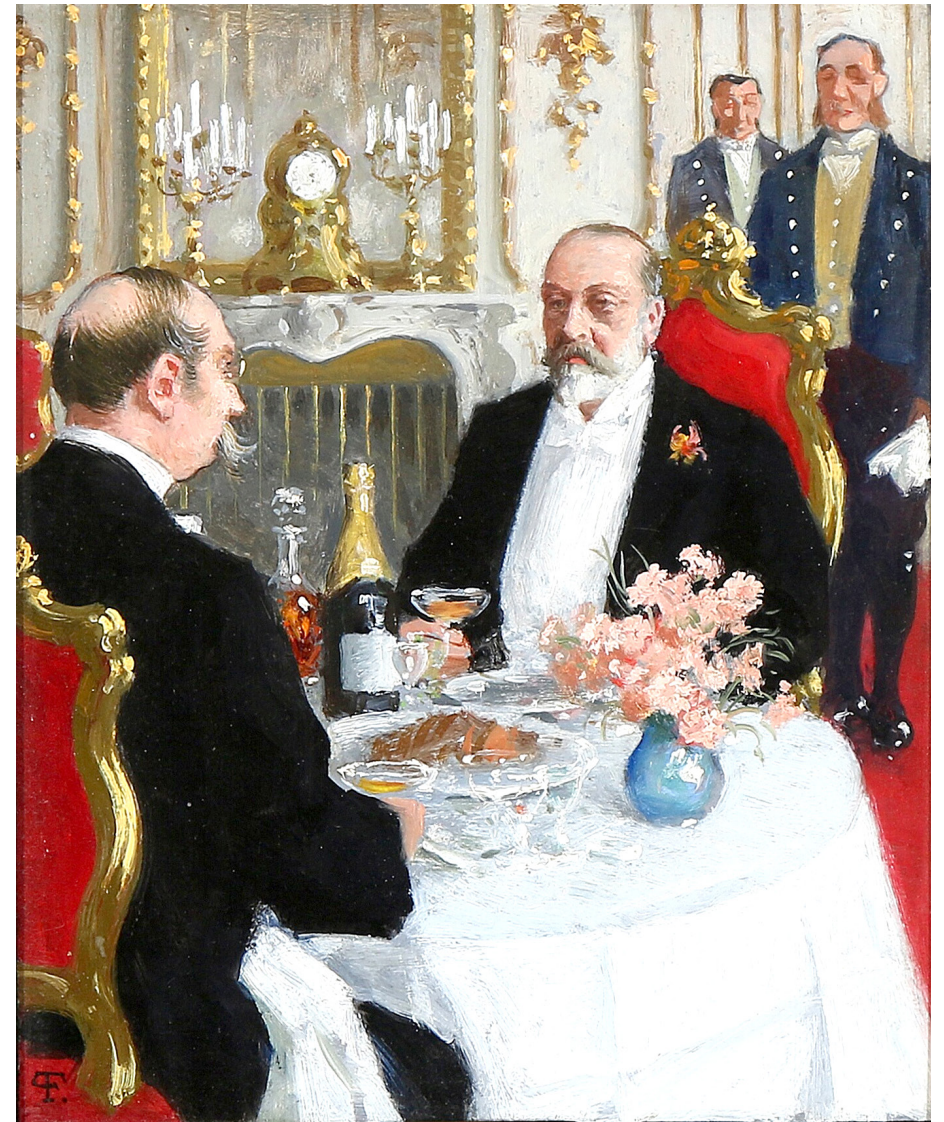
Self-portrait, Nytorv in Winter (1909) CP



Compiled by Toon Senta



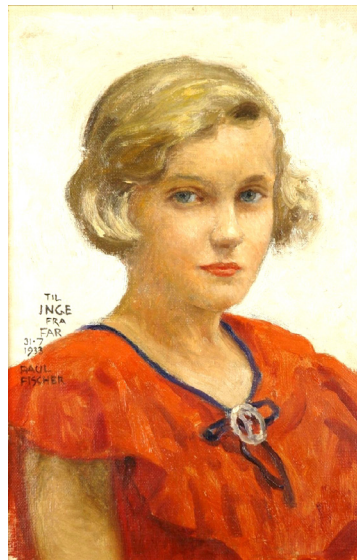
The Artist's Family (1912) CP



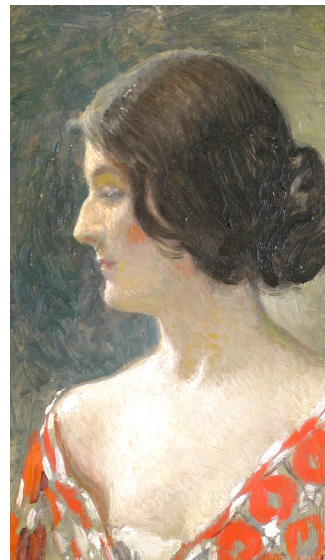
**King George I of Greece and King Edward VII of England
Toasting in Champagne (1901-10) CP**



**Dagny Fischer, née
Grønneberg (c1900) CP**



**Daughter Inge
(c1900) CP**



**Martha Vilhelmine
Jensen (1913) CP**

Women Buying Flowers at Amagertorv (1924) CP



The King's Birthday - the Royal Guard in Red Gala in Østergade (1925) CP

A Summer Evening in the Tivoli Gardens (1888) CP





A Winter's Day on King's Square (1888) CP



Wintry Street Scene (c1925) Rhode Island School of Design Museum



Winter in King's Square (1907) CP



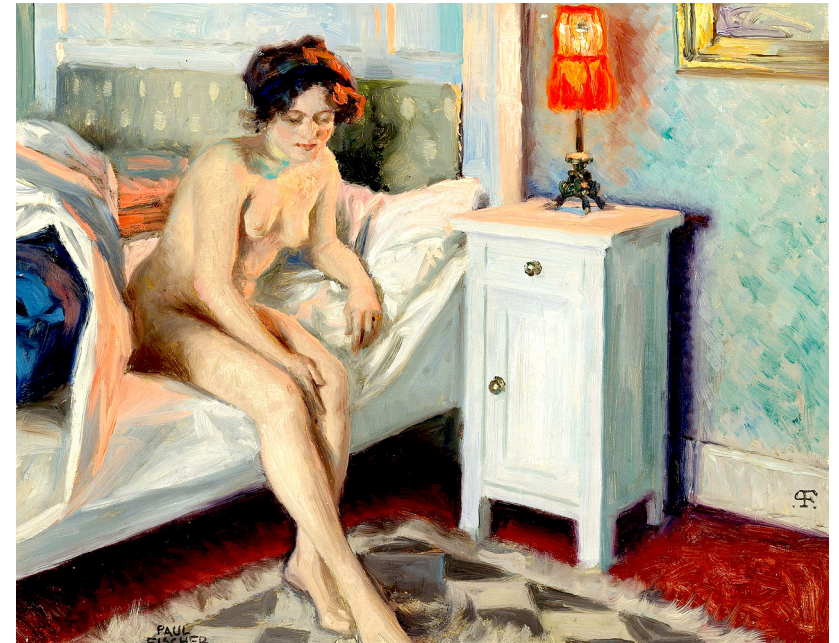
A Winter Day in Østerbrogade (1918) CP



Winter's Day at Trianglen (1912) CP



The Royal Theatre Ballet School, Copenhagen (1889) CP



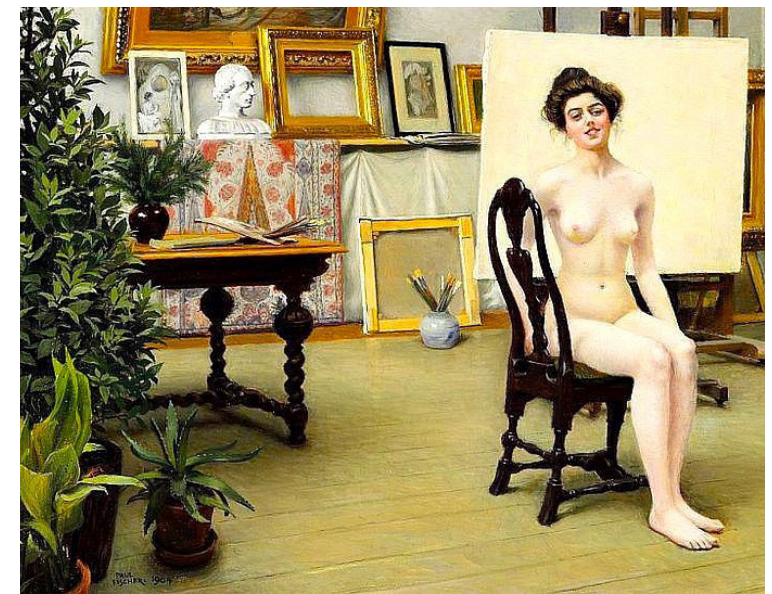
Model on a Bed, in the Glow of a Red Lamp (c1900) CP



Seated Model in the Studio (c1910) CP



Interior (1914) CP



From the Artist's Studio (1904) CP



Three Young Women at the Beach (1913) CP



Nude Bathers on a Beach (1889) CP



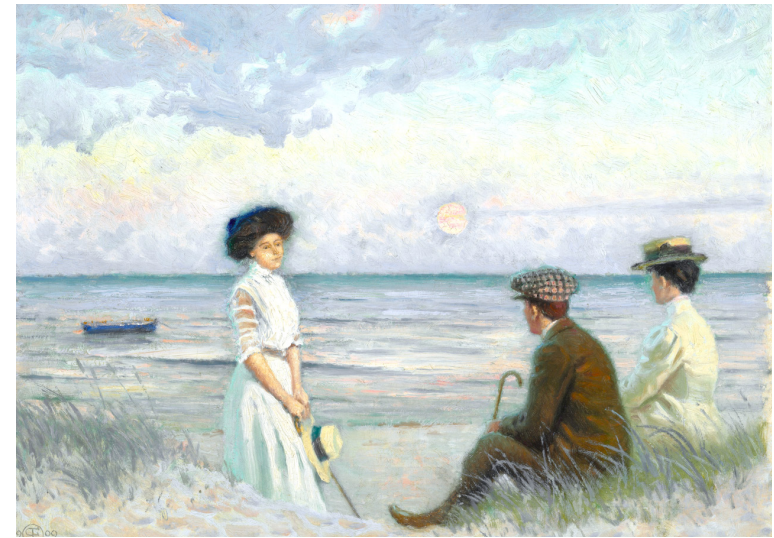
Two Girls at the Beach, Hornbaek (1917) CP



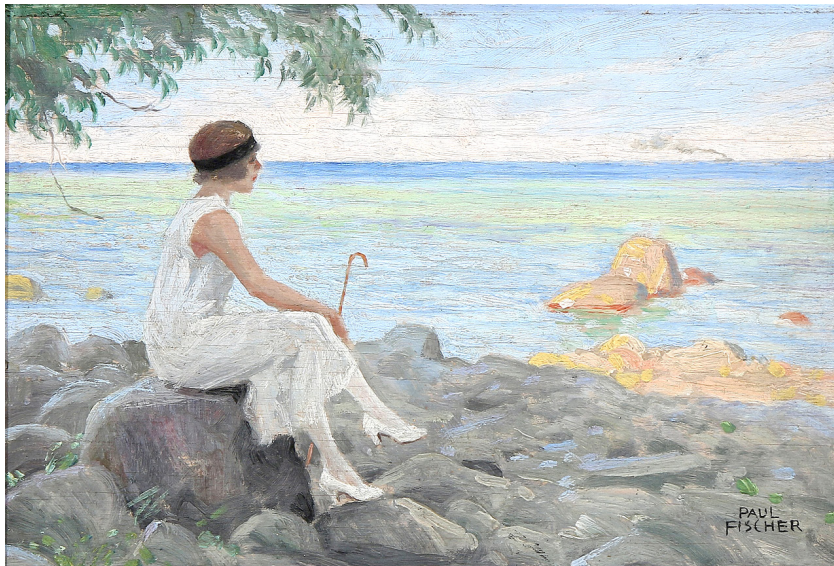
Two Bathing Girls in the Bushes near the Coast of Hornbæk (1917) CP



Two Young women in Summer Dresses at the Beach at Hornbæk (c1917) CP



Evening Atmosphere at Falsterbo Beach (1909) CP

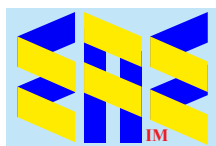


A Young Woman with her Parasol on the Beach (1920s) CP



Miss Elisabeth Fischer and Miss Anna Pauline Bruun (1894) CP

Grateful acknowledgement is made to Wikipedia and Wikipedia Commons and all institutions providing high quality access to copies of paintings in the public domain in countries where the copyright term is the author's life plus 70 years or fewer.



eaeinternal.com

EurAsian Education (Internal)