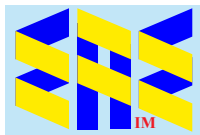
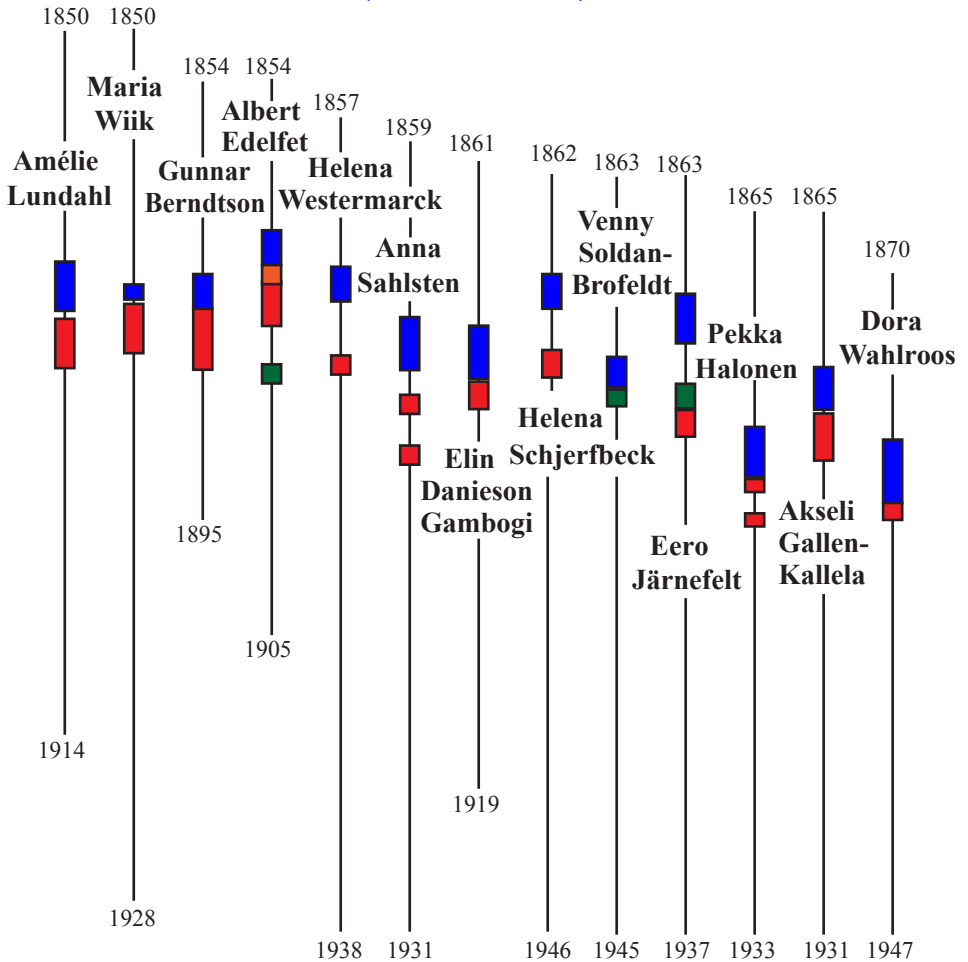


Finnish Painters

(1880-1920)



Compiled by Toon Senta

1848
Finnish Art Association
Drawing School

1939
The Finnish Art
Academy School

Adolf von Becker
(1831 - 1909)



Something for the Cat
(1882) Ateneum



Self-Portrait
(1860s)
Ateneum



The Art Expert (1880-90)
Espoo Museum of Modern Art



Rural Women (1880-90) Espoo Museum of Modern Art



Interior (1885) Ateneum

A Game of Piquet (1869) Atheneum



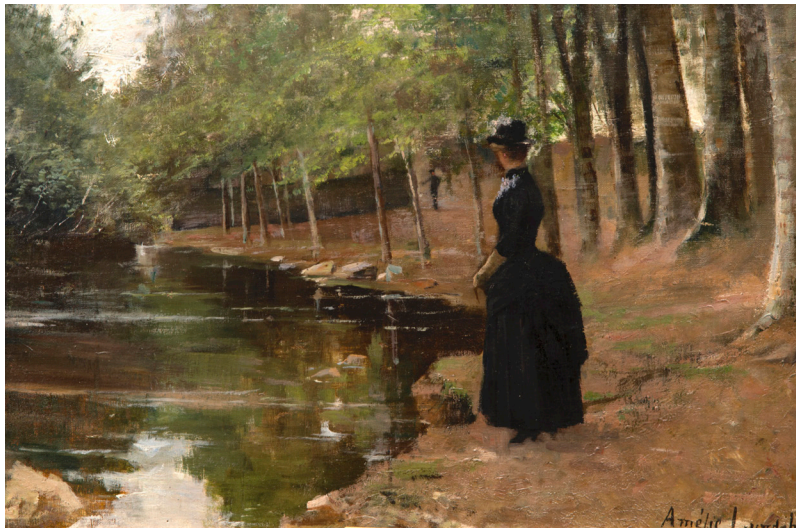
Amélie Lundahl (1850 - 1914)



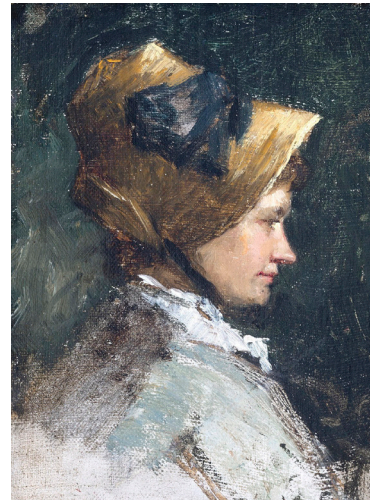
The Garden Girl (1885) Ateneum



Girl from Brittany (1880) CP



Rendez-vous (1880s) CP



**Portrait (Wiik1879)
Gösta Serlachius Foundation**



Girl Watering Flowers (1890s) CP



In the Attic Chamber (1889) CP

Maria Wiik

(1853 - 1928)



Self-Portrait (c1881) CP



Anna Sahlsten (1859 - 1931) By the Well of Runni (1898) CP



In the Church (1884) Ateneum



Breton Woman (1914) Espoo Museum of Modern Art



Woman by the Window (1893) Ateneum



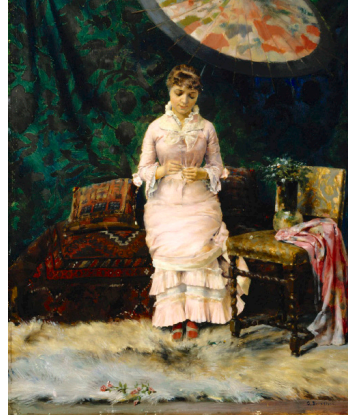
Bread Worries (1895) Turku Art Museum



Music in the Studio (1878) Ateneum

Gunnar Berndtson

(1854 - 1895)



Yes - No, Pause in the Studio (1879) Ateneum



The Bride's Song (1881) Ateneum



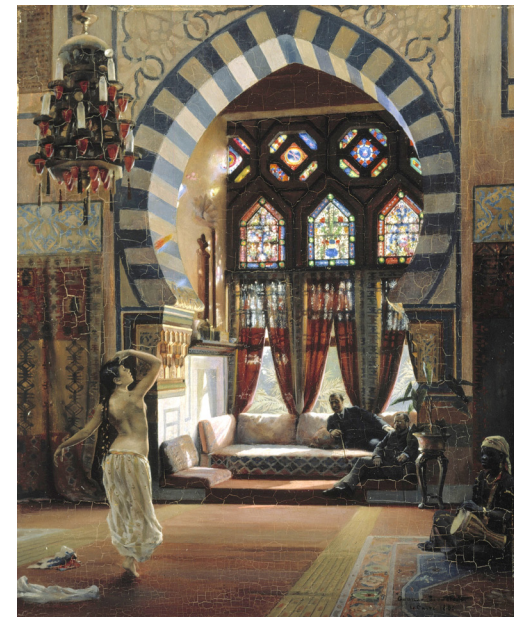
The Mirror (1889) Ateneum



A Rest on the Way to the Fair (1886) Ateneum



**Self-Portrait
(c1880)
Turku Art Museum**



Egyptian Dancer (1883) Ateneum



The Parisienne (1883) Joensuu Art Museum

Albert Gustav Edelfelt (1854 - 1905)



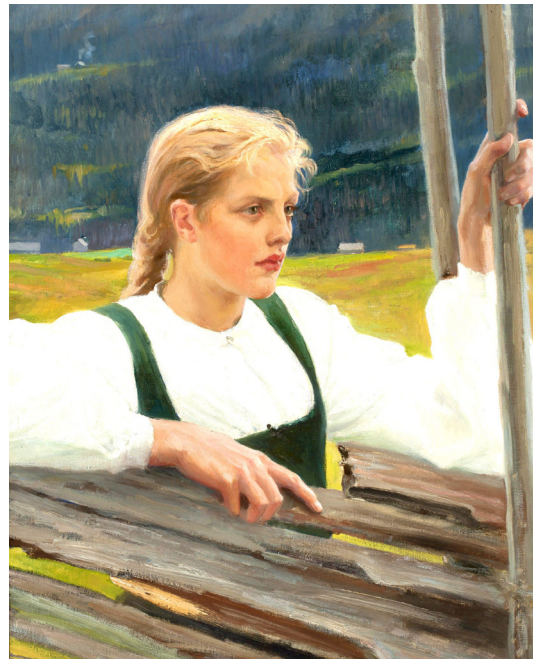
Self-Portrait (1887-90) CP



Nyländska Jaktklubben Harbour in Helsinki (1899) Ateneum



The Milk Girl (1889) CP



Solveig II (1893) Helsinki Art Museum



The Luxembourg Gardens, Paris (1887) Ateneum



Motherhood (1893) Ateneum



Self-Portrait
(1900) Ateneum

**Elin Danielson
-Gambogi**
(1861 - 1919)



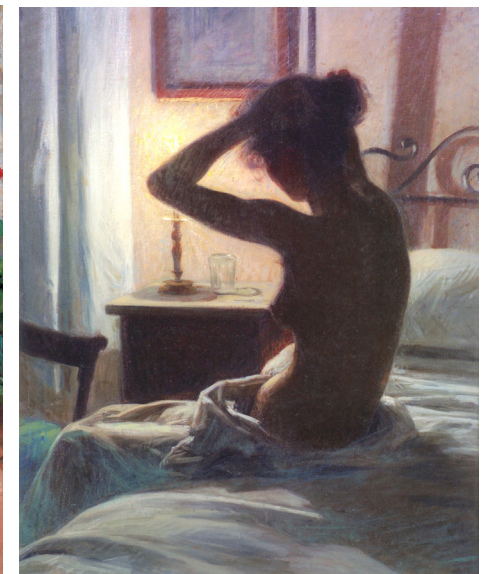
In the Vineyard (1898) Turku Art Museum



After Breakfast (1890) CP



Italian Family (1898) Tampere Art Museum

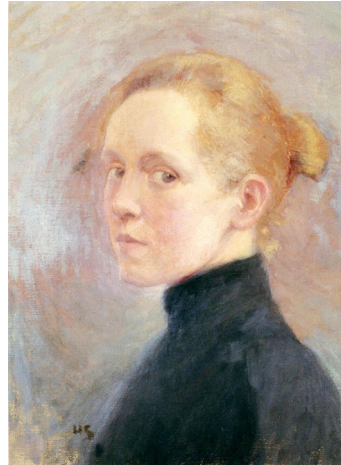


Levolle (1897) CP



Mother and Child (1886) Ateneum

Helena Sofia Schjerfbeck (1862 - 1946)



Self-Portrait (1895)
Ekenäs Museum Center



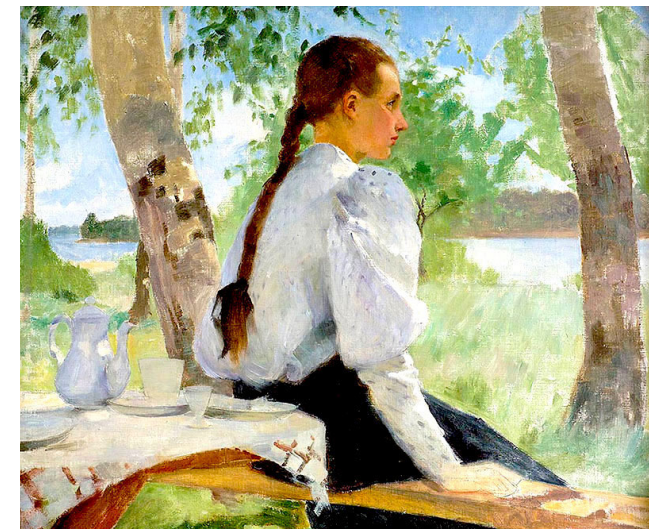
The Convalescent (1888) Ateneum



Girls Reading (1907) Ateneum



Mother and Child (1917) Ateneum



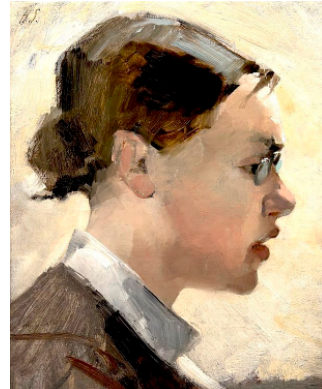
Young Girl under Birch Trees (1891)
Signe and Ane Gyllenberg Foundation



Ironesses, an Important Question (1883) CP

Helena Charlotta Westermarck

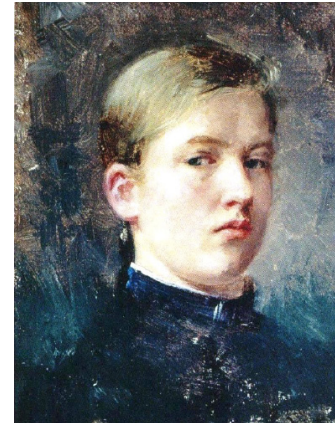
(1857-1938)



Portrait (Schjerfbeck 1884)
Gösta Serlachius Museum

Venny Soldan-Brofeldt

(1863-1945)



Self-Portrait (1882)
Aine Art Museum



Weaver (c1883) Järvenpää Art Museum

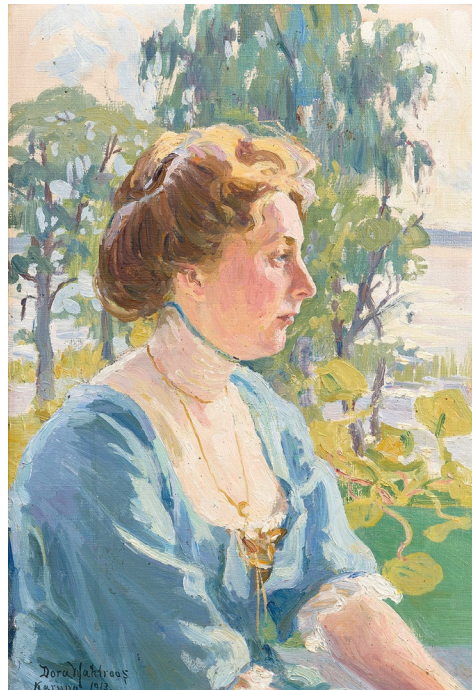
Dora Wahlroos

(1870-1947)



Self-Portrait (1901) Ateneum

Portrait of a Lady (1913) CP

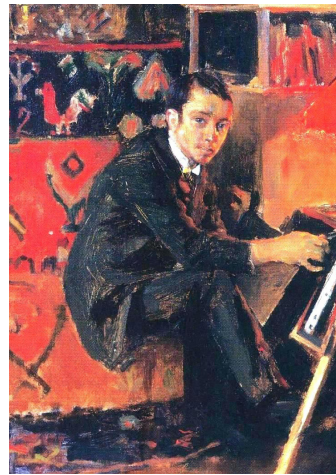


Woman Pushing a Cart (1900) Järvenpää Art Museum



French Wine Bar (1900) Ateneum

Eero Järnefelt (1863-1937)

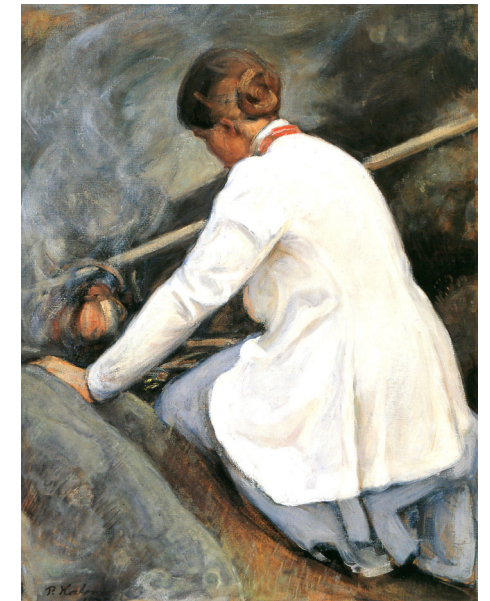


Gallen-Kallela: **Portrait (1888)** CP

Pekka Halonen (1865-1933)



Järnefelt: **Portrait (1891)** Mikkeli Art Museum



Coffee Maker (Wife) (1905) CP



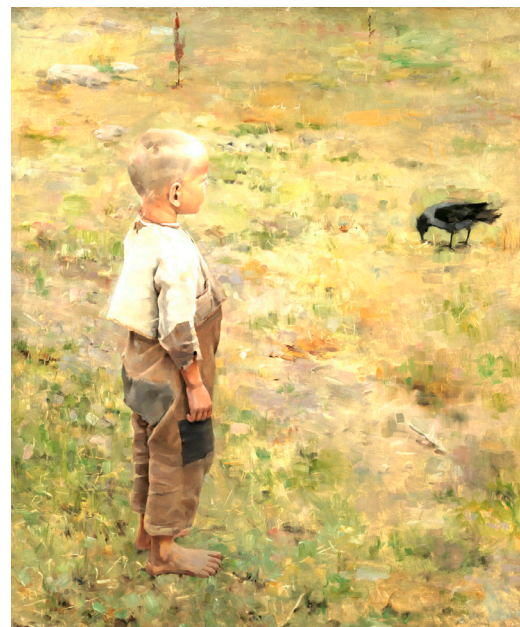
Saimi in the Meadow (1892) Järvenpää Art Museum



Pioneers in Karelia (1900) Ateneum



Lemminkäinen's Mother
(1915) Ateneum



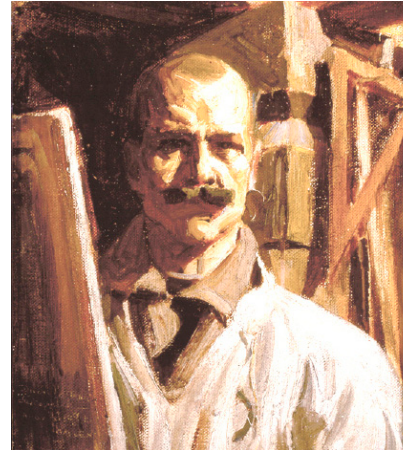
Boy and a Crow (1884) Ateneum



Sibelius - Composer of En Saga (1894) CP

Akseli Gallen-Kallela

(1865 - 1931)



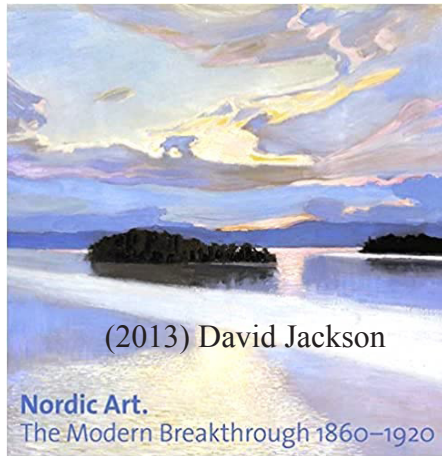
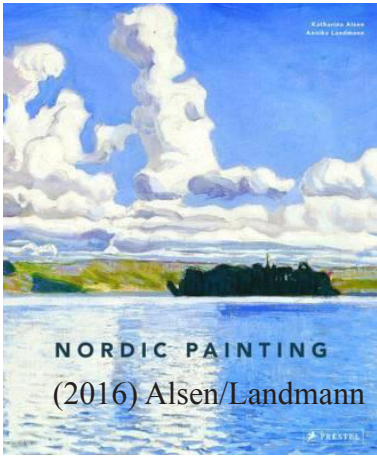
Self-Portrait for the Uffizi Gallery
(1916) Gallen-Kallela Museum



Our Home in Taos (1925) CP



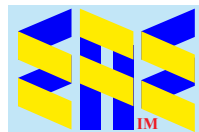
In a Café in Paris (1886) Gösta Serlachius Museum



Grateful acknowledgement is made to Wikipedia/Wikipedia Commons and all institutions and individuals providing access to copies of paintings in the public domain in countries where the copyright term is the author's life plus 70 years or fewer.



eaeinternal.com



EurAsian Education (Internal)