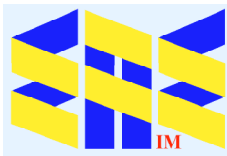


Franz von Stuck

(1863-1928)

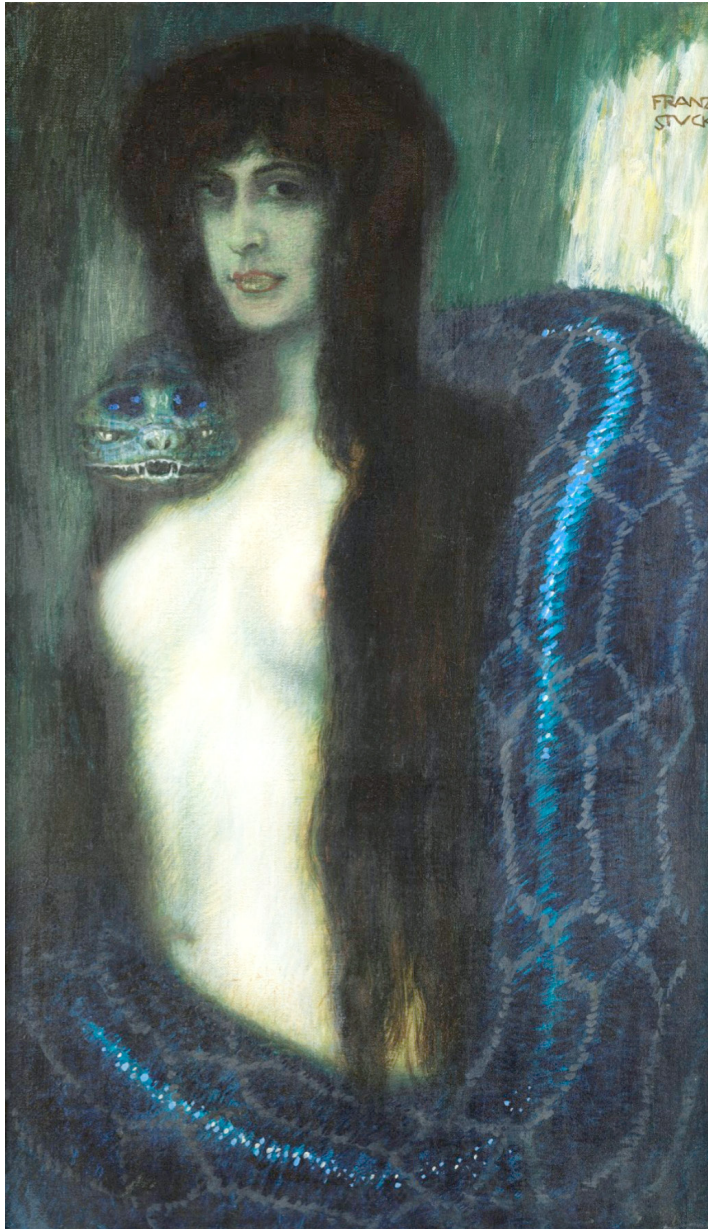


Self-Portrait in the Studio (1905) Alte Nationalgalerie



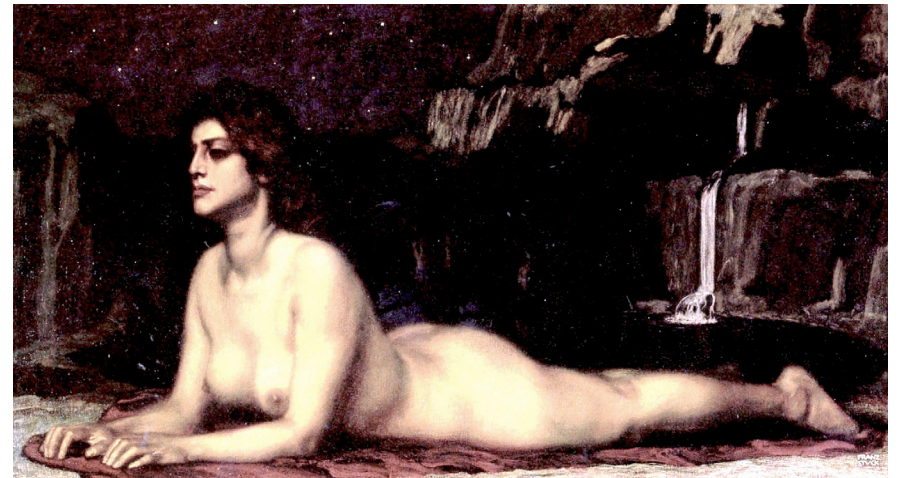
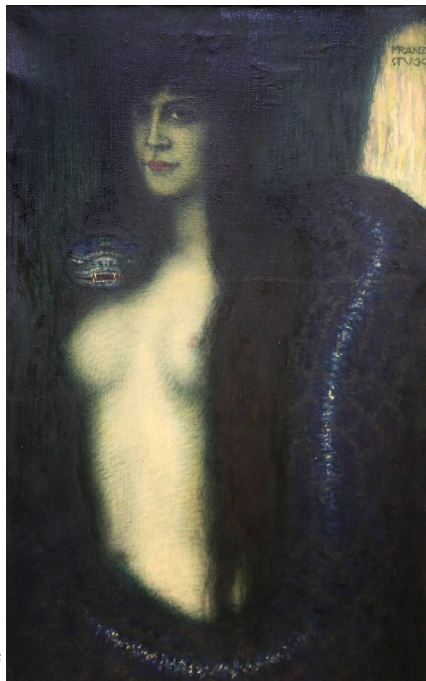
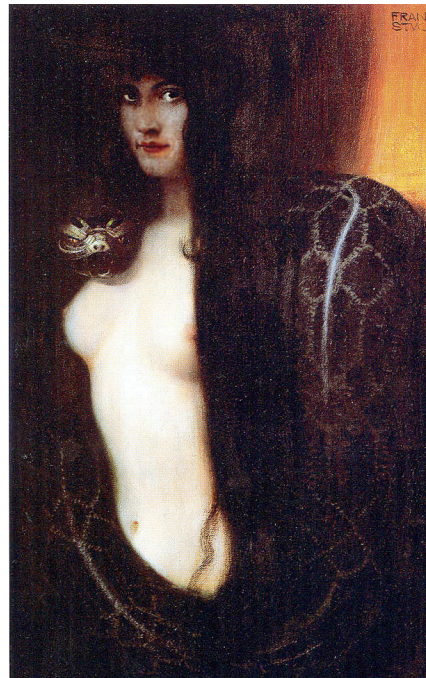
Compiled by Toon Senta

The Sin (1893) Neue Pinakothek



The Sin (1909) Galleria d'Arte Moderna Palermo

The Sin (1912) Alte Nationalgalerie

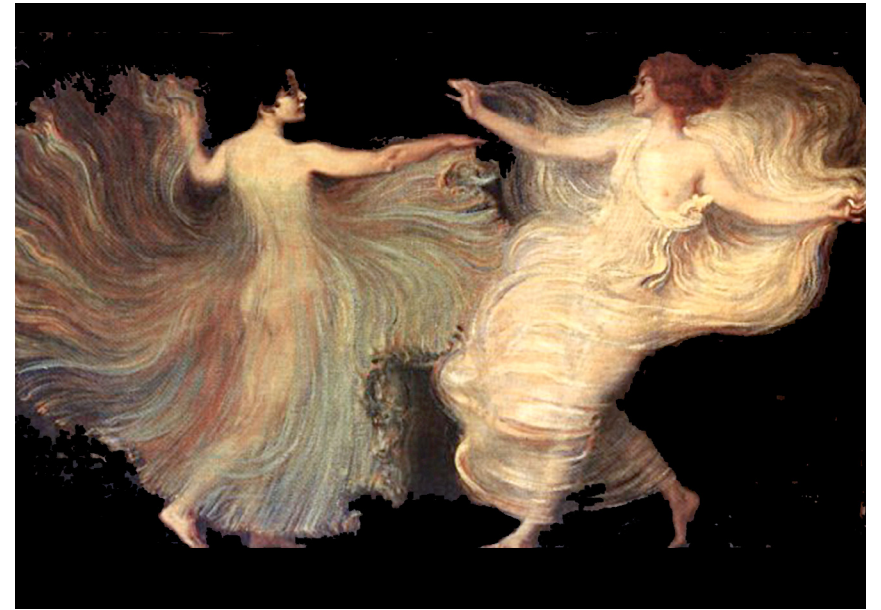


Sphinx (1904) Hessisches Landesmuseum Darmstadt



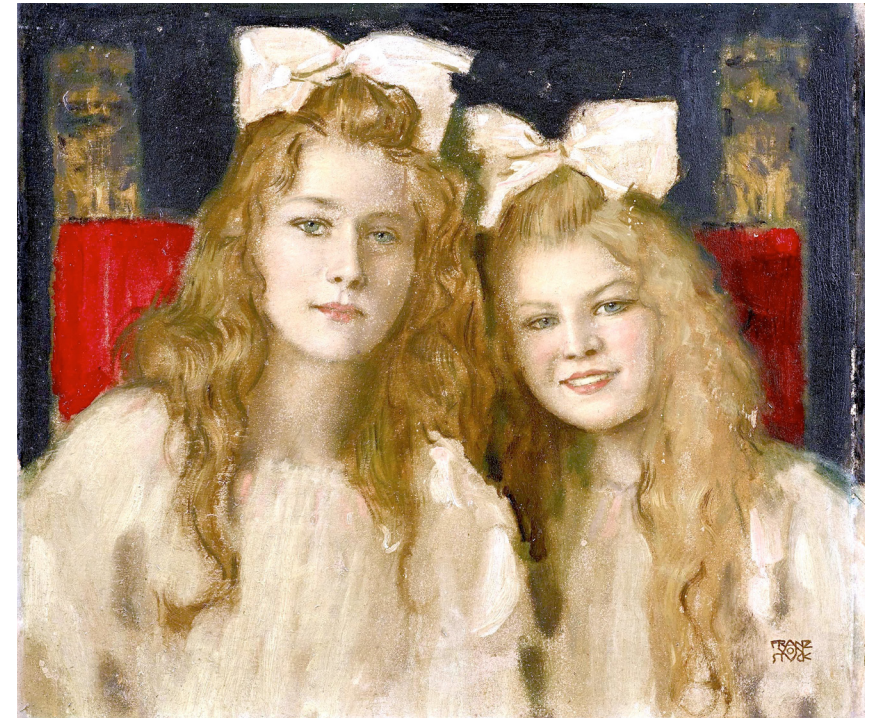
Tilla Durieux as Circe (c1913) Alte Nationalgalerie

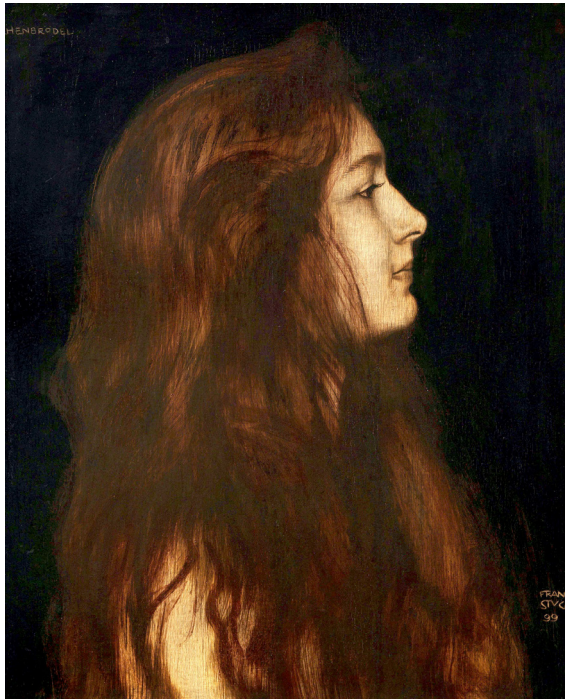
Dancers (1896) CP



The Seesaw (1898) Villa Stuck

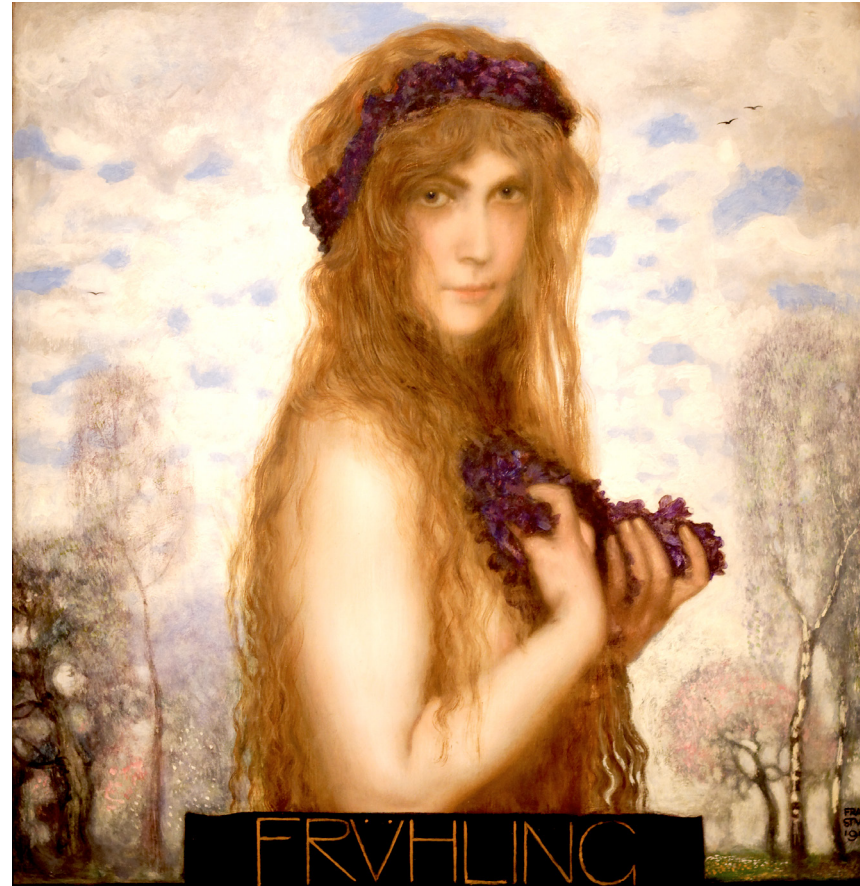
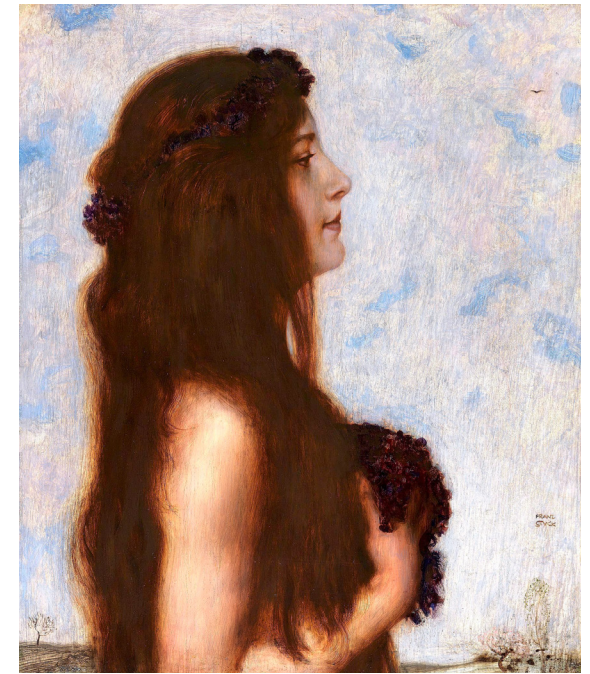
Two Young Women (1900) CP





Cinderella (1900-02) CP

Spring (1900-02) CP



Spring (1902) Musée des Beaux-art de Budapest

Spring (1909) Hessisches Landesmuseum Darmstadt

Spring (1912) Hessisches Landesmuseum Darmstadt

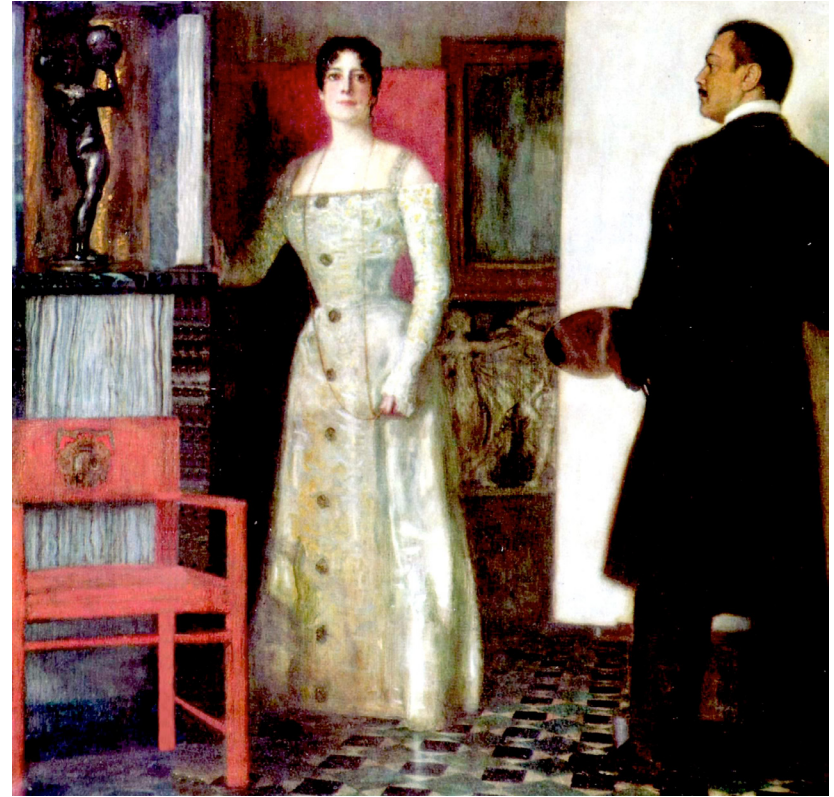




Mary Stuck
(1914) CP

Daughter Mary
(c1912) CP

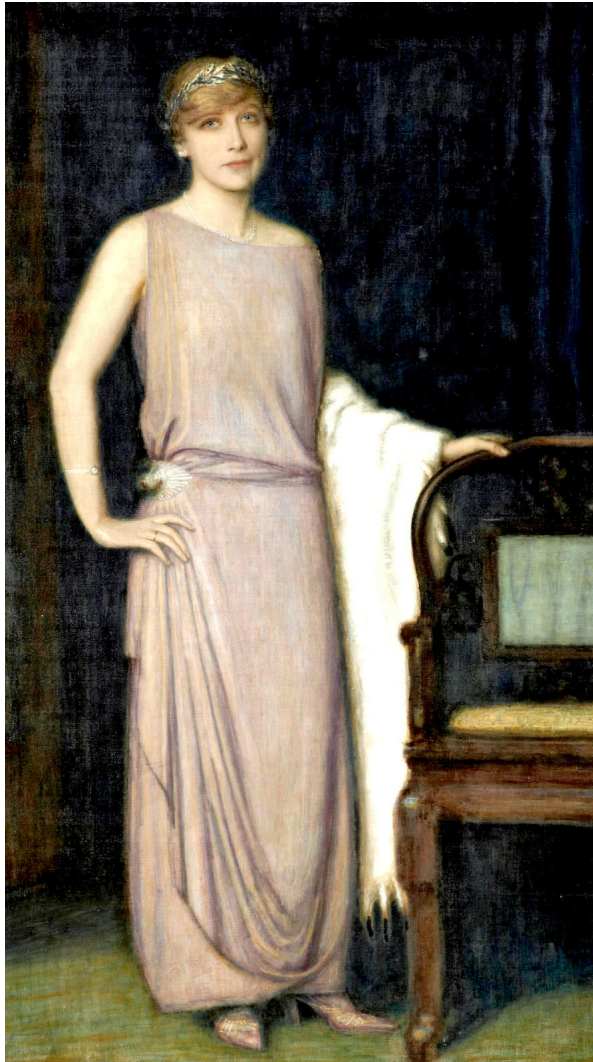
**Franz
and
Mary
Stuck
in the
Studio**
(1902)
CP



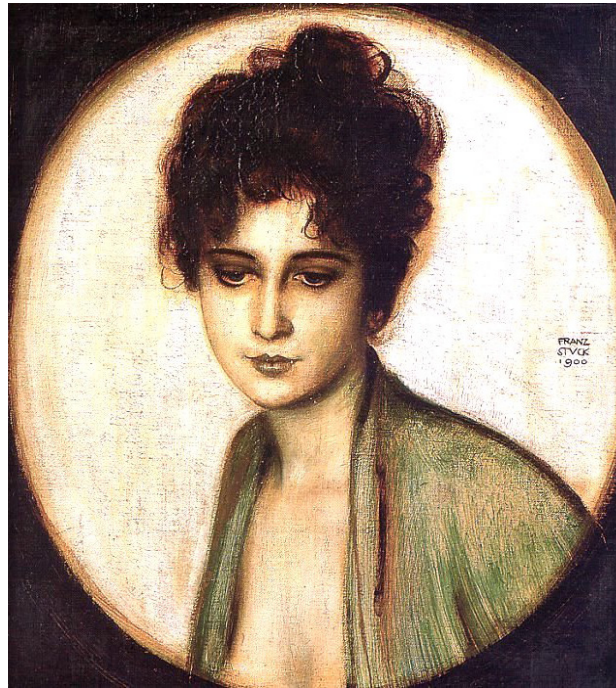
Daughter Mary (c1910) CP



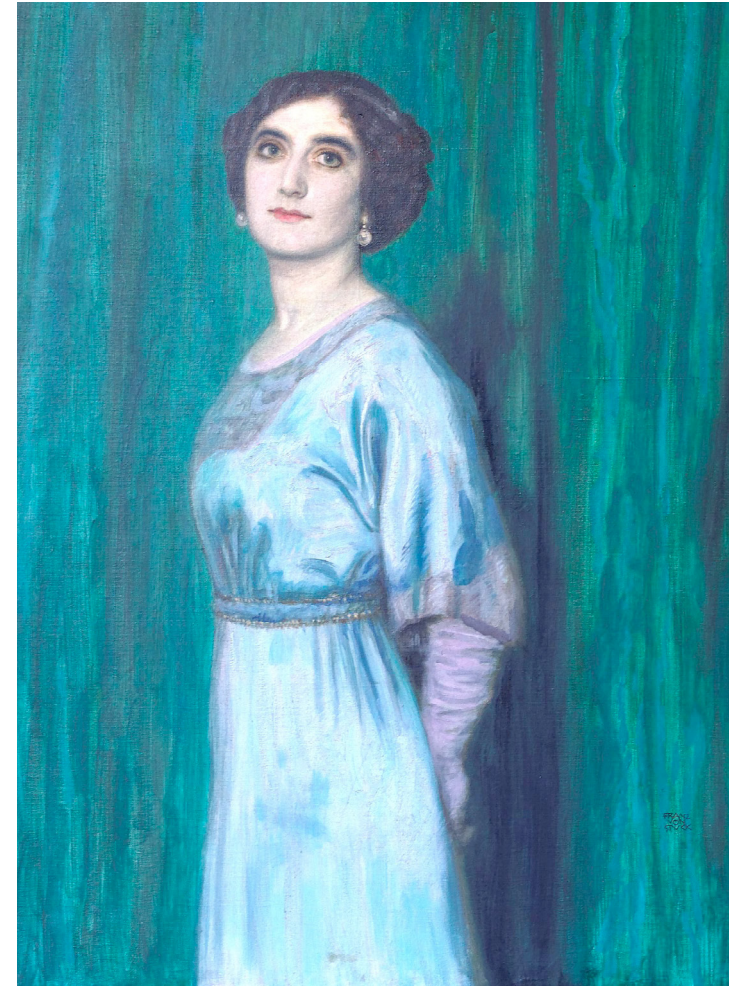
Daughter Mary (c1912) CP



Marianne Mechler (1924) CP



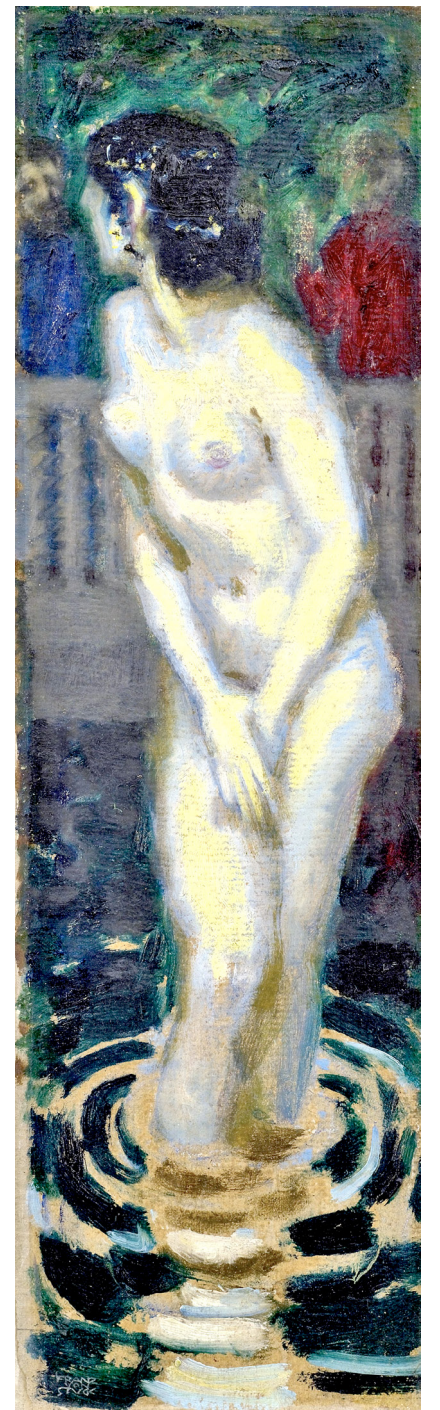
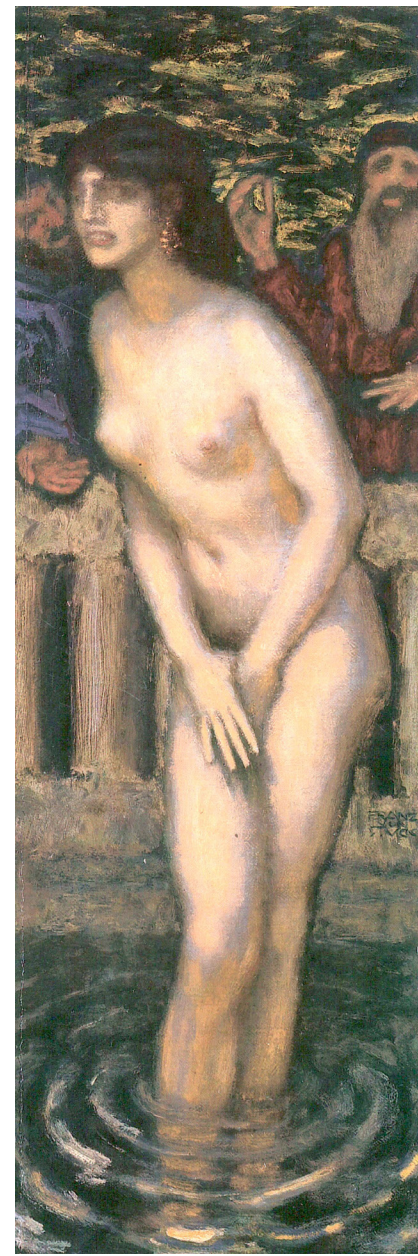
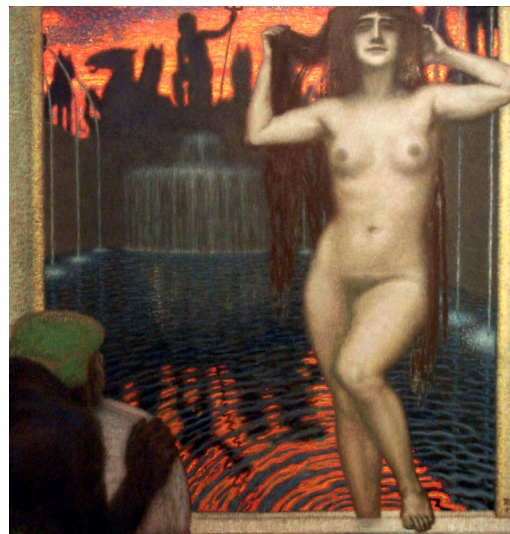
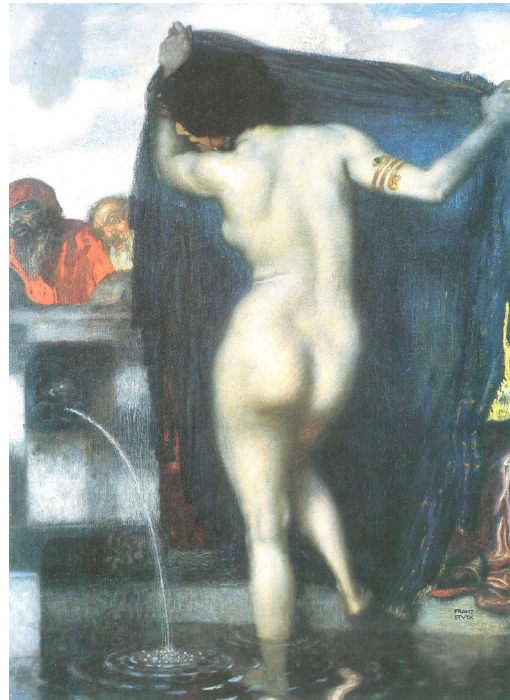
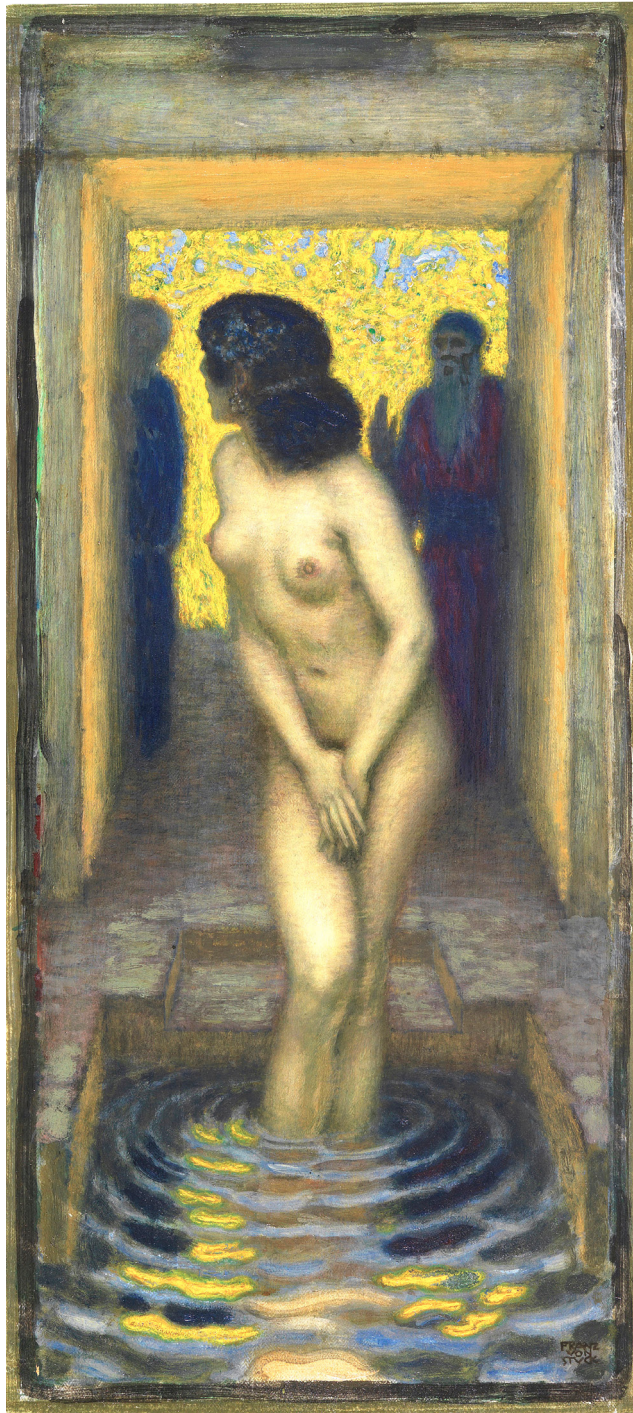
Frau Feez (1900) CP



Bettina Heinemann (1912/13) Museum Villa Stuck



Woman (????) CP



Bathsheba (1912) Museo Nacional de Bellas Artes

Susanna Bathing (1904) St. Gallen Museum of Art

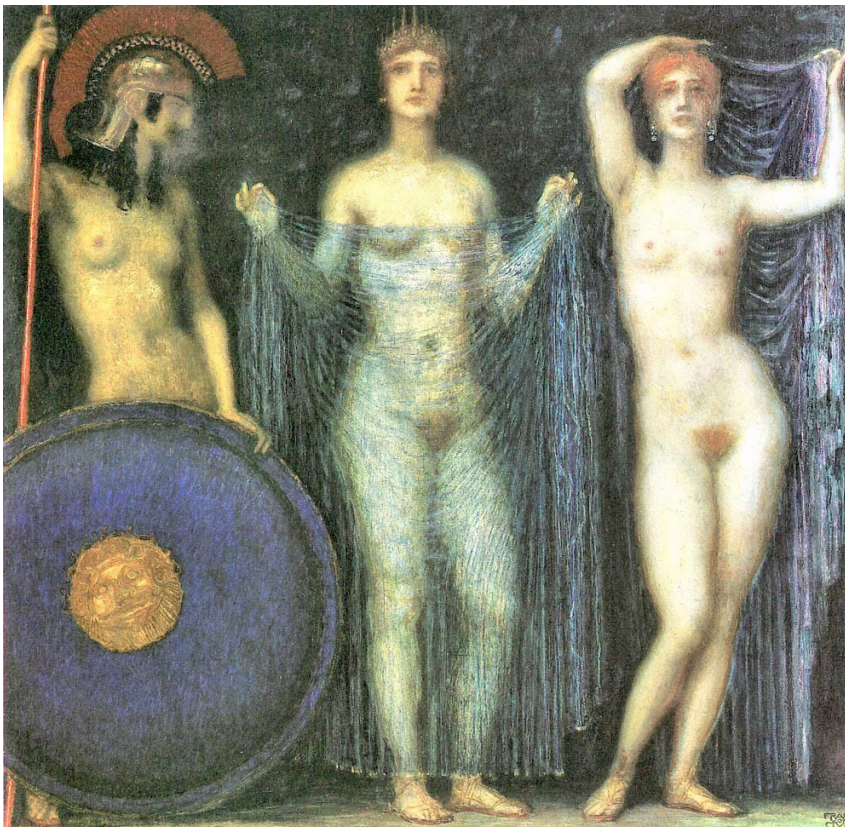
Susanna and the Elders (c1913) CP



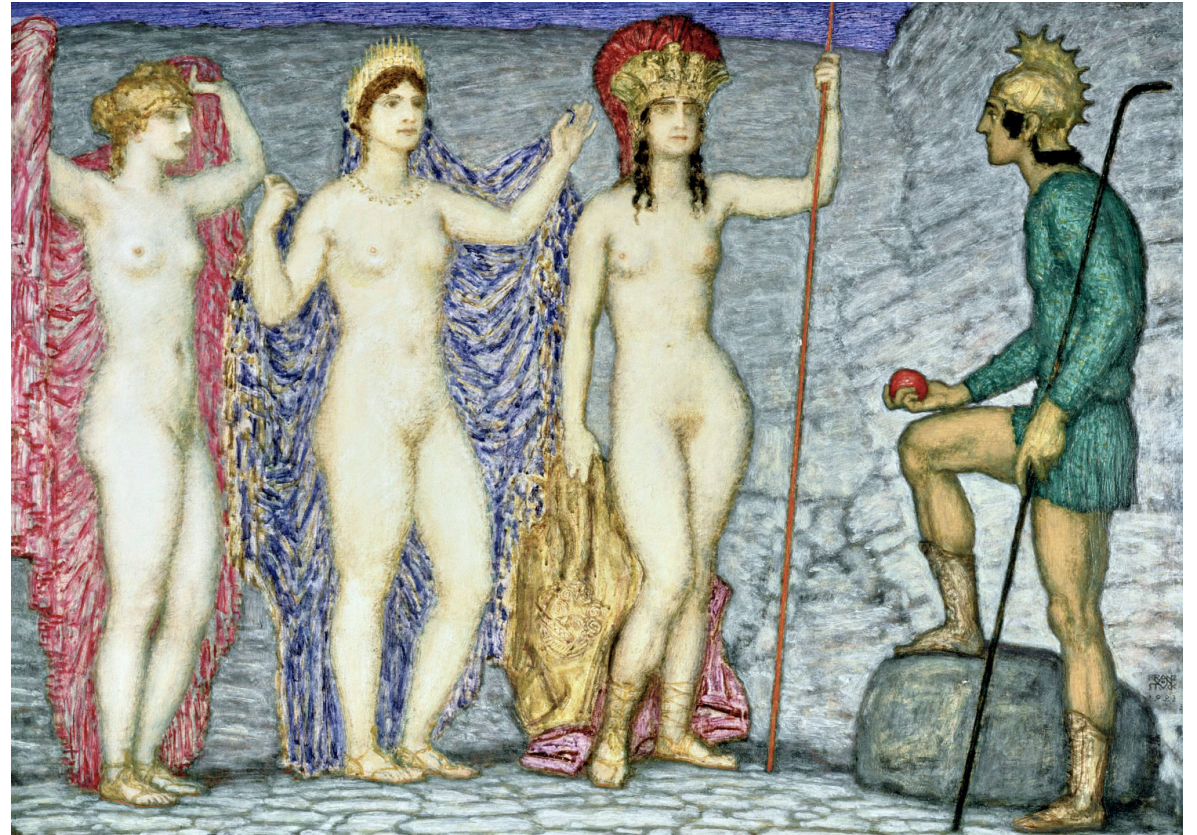
Love Spring
(1917) CP



Phryne (1917)
Portland Art
Museum



Athena, Hera and Aphrodite (1923) CP



Judgement of Paris (1923) Frye Art Museum

FRANZ VON STUCK



Grateful acknowledgement is made to Wikipedia and Wikipedia Commons and all institutions and private individuals providing high quality access to copies of paintings in the public domain in countries where the copyright term is the author's life plus 70 years or fewer.

Jo-Anne Birnie Danzker
(Editor) (2014)



EurAsian Education (Internal)