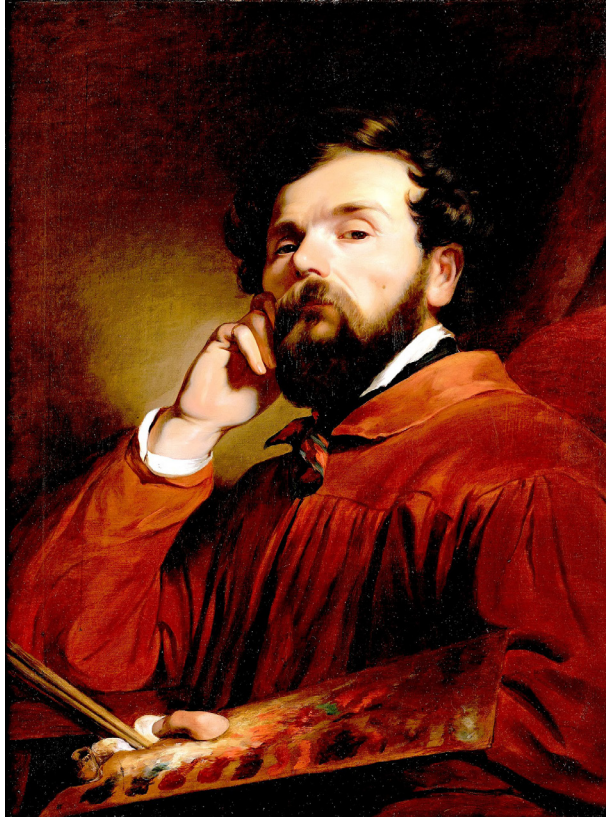
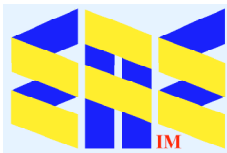


Friedrich von Amerling (1803-1887)



Self-Portrait (c1850) Belvedere



Compiled by Toon Senta



Francis I of Austria (1832)
Kunsthistorisches Museum

Francis I of Austria (1834)
Kunsthistorisches Museum



Leopold (1863)
Belvedere

Rudolf von Arthaber and Children (1837)
Belvedere

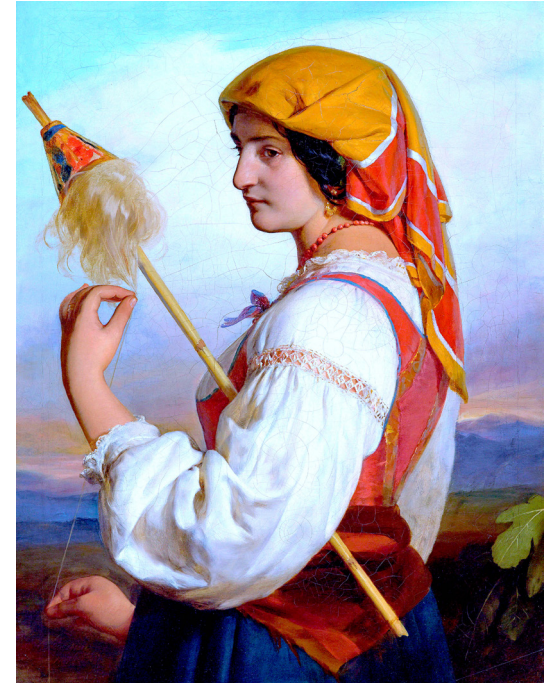
Maximilian Todesco (1846)
Belvedere





Profile (c1850) CP

Italienne (1846) CP

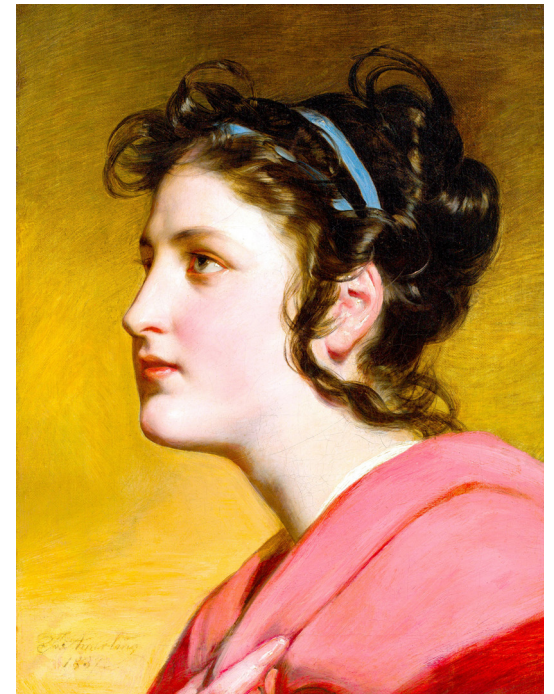


Girl (1839) CP



Young Eastern Woman (1838) Cleveland Museum of Art

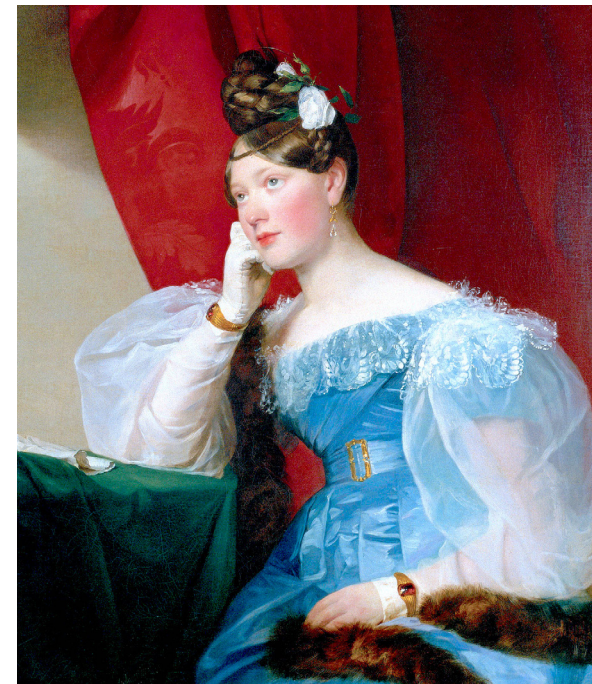
Elise Kreuzberger (1837) CP





Marie Freiin (1832)
Belvedere

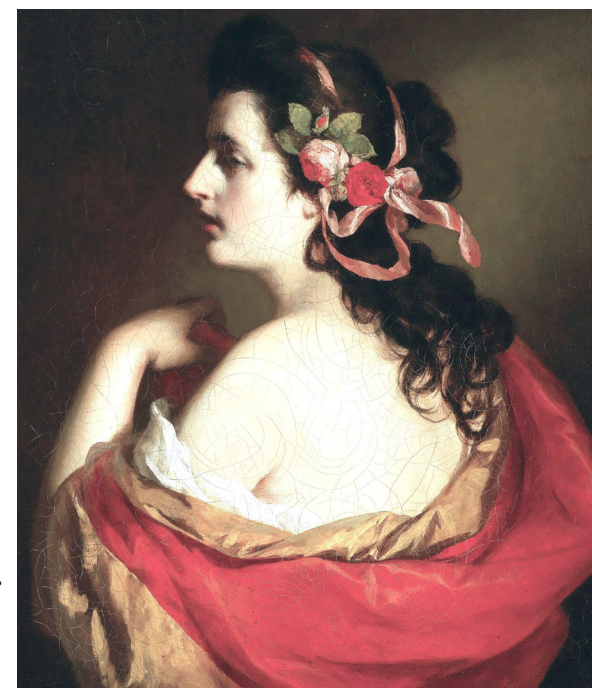
Countess Julie von Woyna (1832)
Universalmuseum Joanneum



Lost In Dreams (1835) Liechtenstein Museum

Amalie Klein (1834)
Belvedere

Young Girl with Bands in her Hair (1865) CP



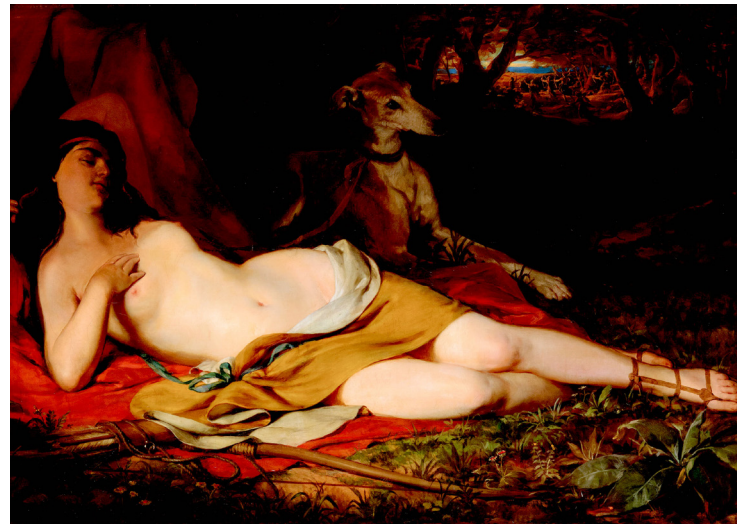
Sleeping Fisherwoman (1834) CP



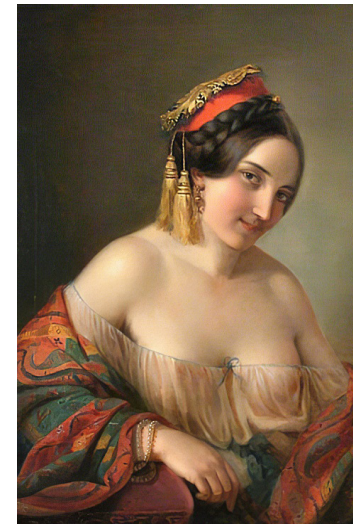
Caritas (c1850) CP

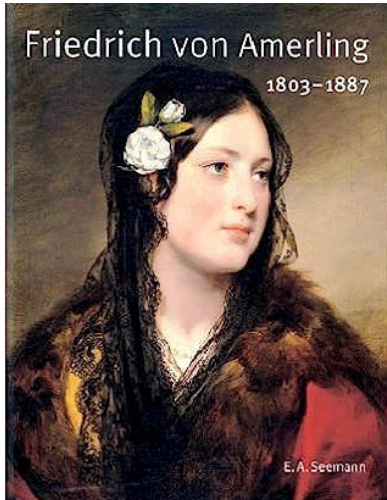


Diana at Rest (c1853) CP



Gypsy Girl (c1850) CP





Grateful acknowledgement is made to Wikipedia and Wikipedia Commons and all institutions and private individuals providing high quality access to copies of paintings in the public domain in countries where the copyright term is the author's life plus 70 years or fewer.

Sabine Grabner (2003)



eaeinternal.com

EurAsian Education (Internal)