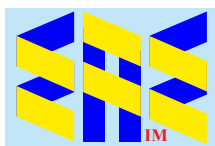


# Düsseldorf School of Painting (1819-1860)



**The Old Academy in Düsseldorf**  
(Andreas Achenbach 1831) Museum Kunstpalast



**Compiled by Toon Senta**





**The Schadow Circle (the Bendemann Family and their Friends)**  
(c1518) National Gallery



**Double Portrait of Princes Friedrich Wilhelm of Prussia and Wilhelm zu Solms-Braunfels (Schadow 1830)** Museum Kunstpalast



**Picture Show of the Düsseldorf Artists in the Art Academy**  
(Friedrich Boser 1844) Stadtmuseum Düsseldorf

**Friedrich Wilhelm von Schadow**  
(1789-1862)

**Genre**

- Theodor Hildebrandt** (1804-1874)
- Karl Ferdinand Sohn** (1805-1867)
- Julius Hübner** (1806-1882)
- Eduard Bendeman** (1811-1889)

**Still-Life**

**Johann Wilhelm Preyer** (1803-1889)

**Landscape**

- Johann Wilhelm Schirmer** (1807-1863)
- Karl Friedrich Lessing** (1808-1880)
- Andreas Achenbach** (1815-1910)
- Oswald Achenbach** (1827-1905)



**The Pinter Wilhelm von Schadow (c1850)**  
Royal Museum of Fine Arts Antwerp

**Lida Bendemann, born Schadow**  
(1847) Museum Kunstpalast



**Two Girls at the Well (1833)** Museum Kunstpalast

**Eduard Bendeman (1811-1889)**

**Mourning Jews in Exile (c1832)** CP





The Neva Saint Petersburg (1844) Rijksmuseum

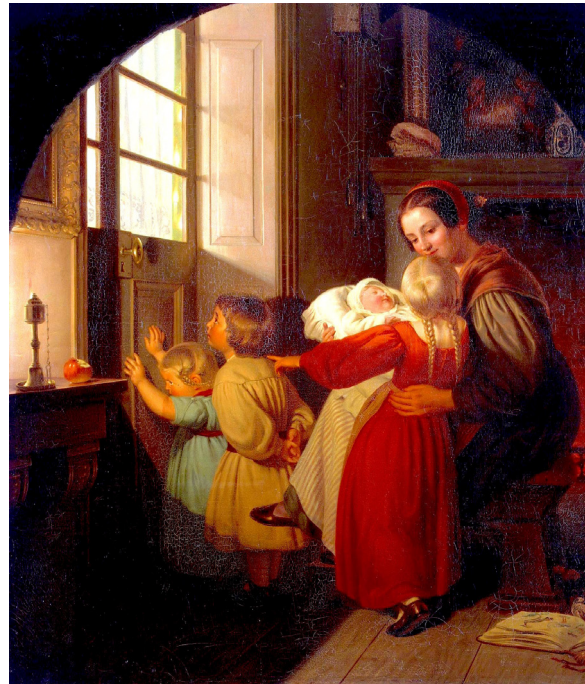


The Warrior and his Child (1832) Alte Nationalgalerie

## Theodor Hildebrandt (1804-1874)

Anticipation of the Christmas tree (1840) Hermitage Museum

Princess Marianne of Prussia (1837)  
Royal Collections of the Netherlands





Johann Gottfried Schadow (1832) Alte Nationalgalerie

## Julius Hübner (1806-1882)



Pauline Hübner, born Bendemann (1829) Alte Nationalgalerie

Trout Fishermen at a Mill Stream (1851)  
Schlesisches Museum zu Görlitz



The Painters Karl Friedrich Lessing, Carl Sohn and Theodor Hildebrandt (1839) Alte Nationalgalerie







Torquato Tasso and the Two Leonores (1839) Museum Kunstpalast

## Karl Ferdinand Sohn (1805-1867)



The Two Leonores (c1834) CP

**Minstrel  
and  
Two  
Listening  
Ladies**  
(1849)  
National  
Museum  
of Art,  
Architecture  
and Design





**The Geroldsau Valley near Baden-Baden (1855)**  
Staatliche Kunsthalle Karlsruhe

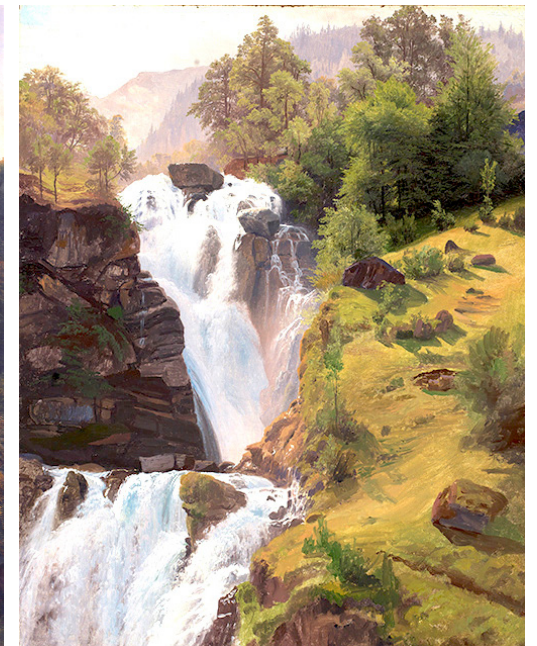
## **Johann Wilhelm Schirmer (1807-1863)**



**South Tyrolean House under Chestnut Trees (1839-40)** Schloss Weimar

**The Wetterhorn (1838)** Museum Kunstpalast

**The Reichenbach Falls near Meiringen (1838)**  
Staatliche Kunsthalle Karlsruhe





**The Robber and His Child (1832) Philadelphia Museum**

## **Karl Friedrich Lessing (1808-1880)**



**Knight's Castle / Rock Castle (1828) Alte Nationalgalerie**



**The Siege (Defense of a Church Courtyard During the Thirty Years' War) (1848) Museum Kunstpalast**







**Winter Boat Dock** (1839) CP

**Andreas Achenbach** (1815-1910)

**Oswald Achenbach** (1827-1905)



**Towboat Leaving the Port of Ostend at Heyday**  
(>1882) Royal Museum of Fine Arts Antwerp



**View of Florence** (1883) CP



Still-life of Fruits and Ivory Tankard (1831) Alte Nationalgalerie

# Johann Wilhelm Preyer (1803-1889)



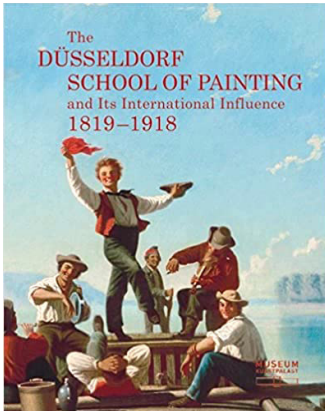
Garden Bouquet in a Pitcher (1831) Alte Nationalgalerie



Tropical Fruits with Milk Glass Shell in Shell Shape (1846) Alte Nationalgalerie







Baumgärtel (Ed) (2012)

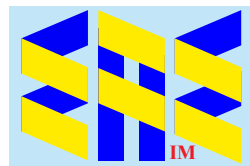
Grateful acknowledgement is made to Wikipedia and Wikipedia Commons and all institutions and private individuals providing high quality access to copies of paintings in the public domain in countries where the copyright term is the author's life plus 70 years or fewer.



Christa Holtel (2017)



[eaeintermal.com](http://eaeintermal.com)



**EurAsian Education** (Internal)