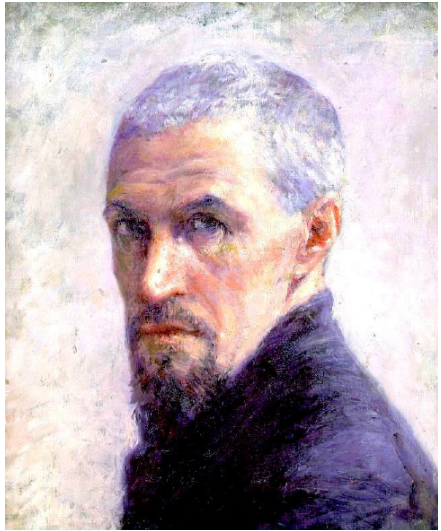


# Gustave Caillebotte

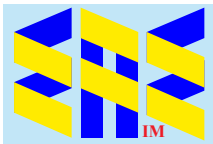
(1848-1894)



(1878)



**Self-portrait**  
(c1892) Musée d'Orsay



**Compiled by Toon Senta**



**Woman at a Dressing Table (1873) CP**

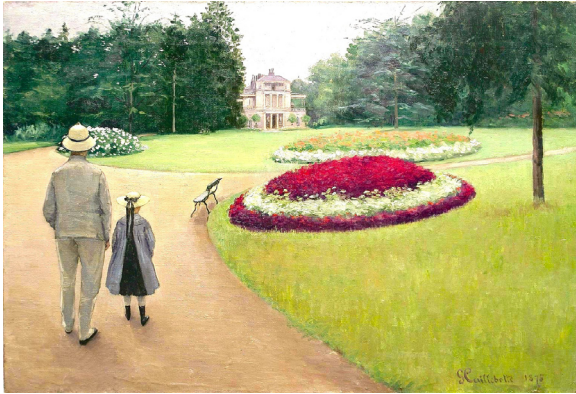


**Intérieur d'Atelier au Poêle (1873/74) CP**



**Femme Nue étendue sur un Divan (1873) CP**





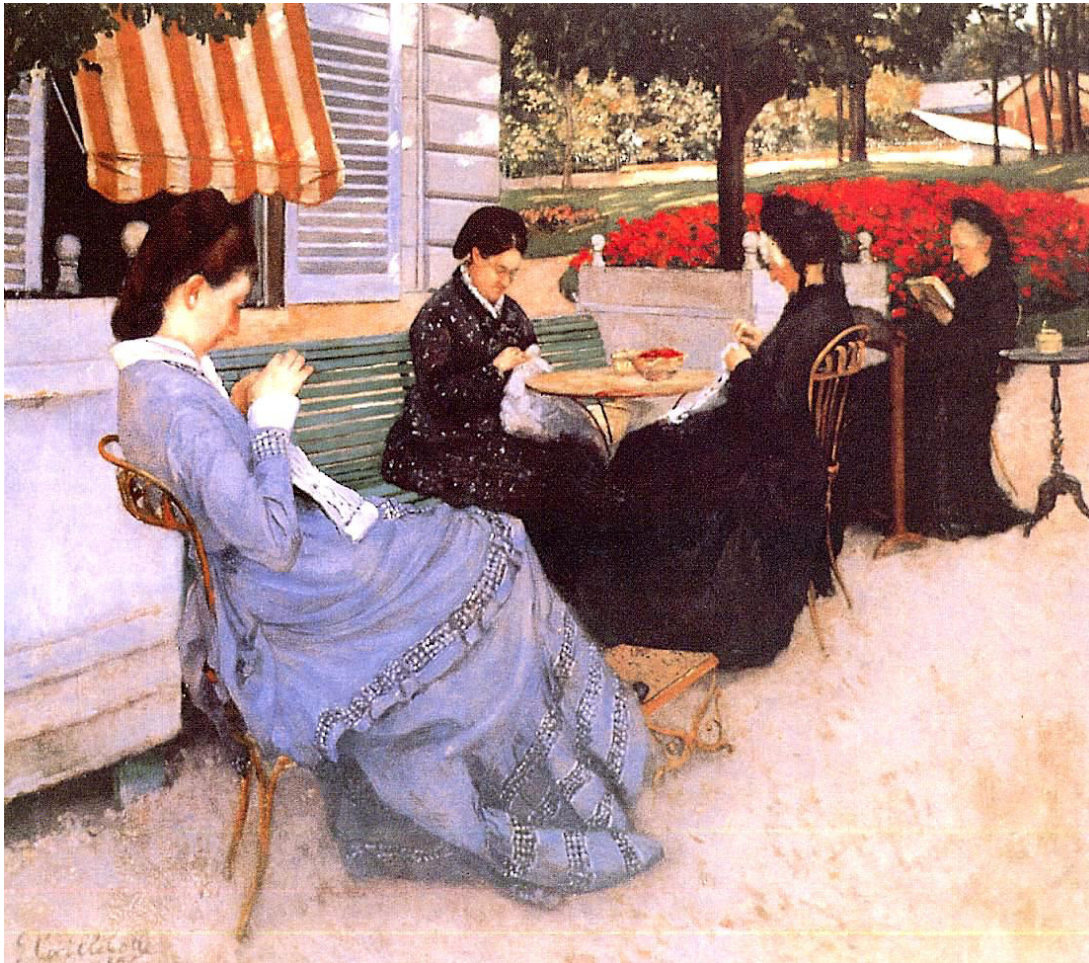
**Le Parc de la Propriété Caillebotte à Yerres (1875) CP**

**Les Jardiniers (1875) CP**



**Les Orangers (1878) Museum of Fine Arts, Houston**

**Portraits à la Campagne (1876) Baron Gérard Museum**







**Le Pont de l'Europe (1876) CP**



**Rue de Paris, Temps de Pluie (1877) Art Institute of Chicago**



**Le Pont de l'Europe  
(1876) Musée du Petit Palais**



**Sur le Pont de l'Europe (1876)  
Kimbell Art Museum**





**Vue de Toits (1878) CP**



**Jeune Homme à la Fenêtre (1875) CP**



**Vue de Toits (Effet de Neige) (1878) Musée d'Orsay**



**La Place Saint-Augustin, Temps Brumeux (1878) CP**



**Rue Halévy, Vue d'un Sixième Étage (1878) Museum Barberini,**





**Canotiers Ramant sur l'Yerres (1877) CP**

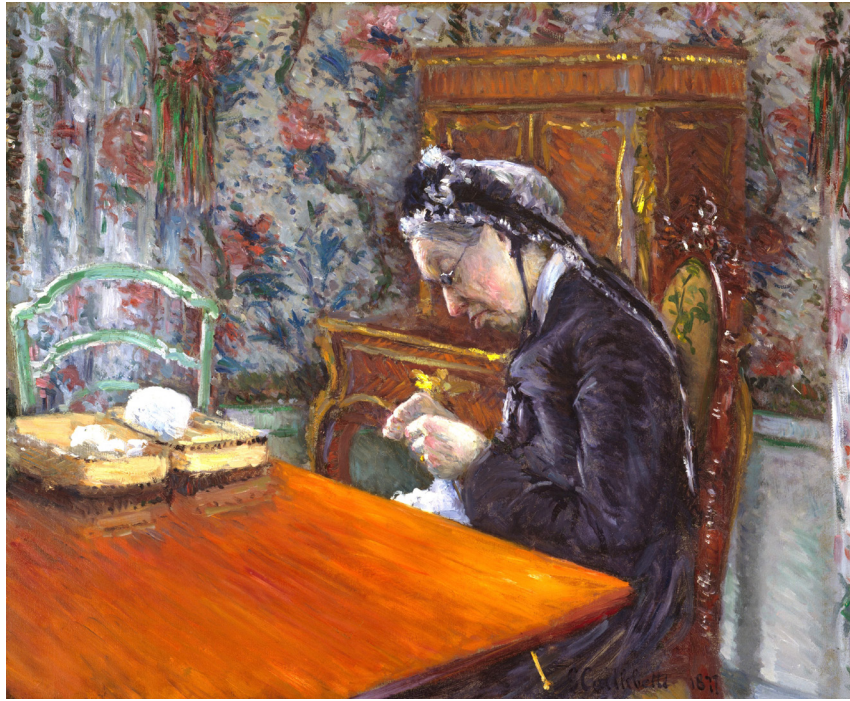


**Skiffs (1877) National Gallery of Art**



**Canoë sur la Rivière Yerres (1877) Norton Simon Museum**

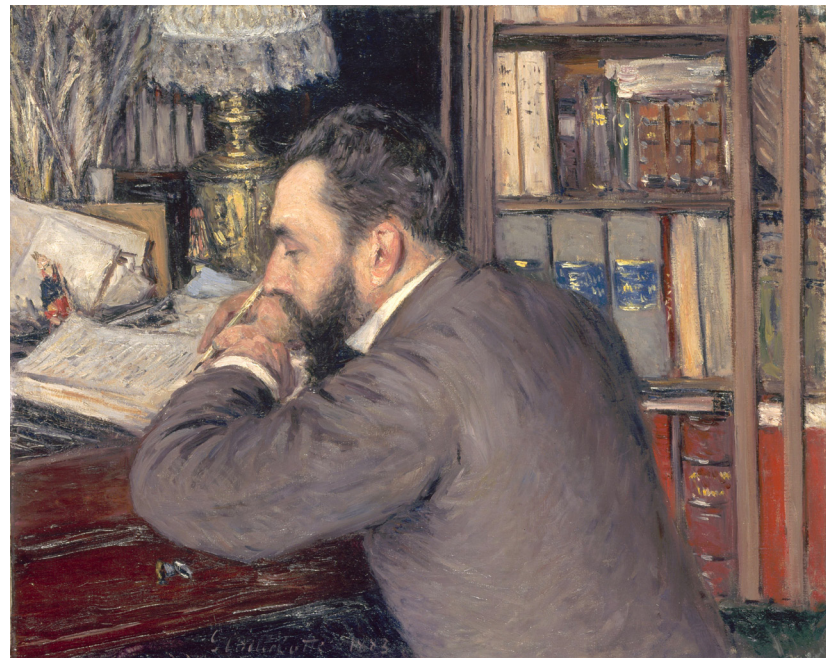




**Tricot Mademoiselle Boissière (1877)** Museum of Fine Arts, Houston



**Dans un Café (1883)** Musée des Beaux-Arts de Rouen



**Henri Cordier (1883)** Musée d'Orsay

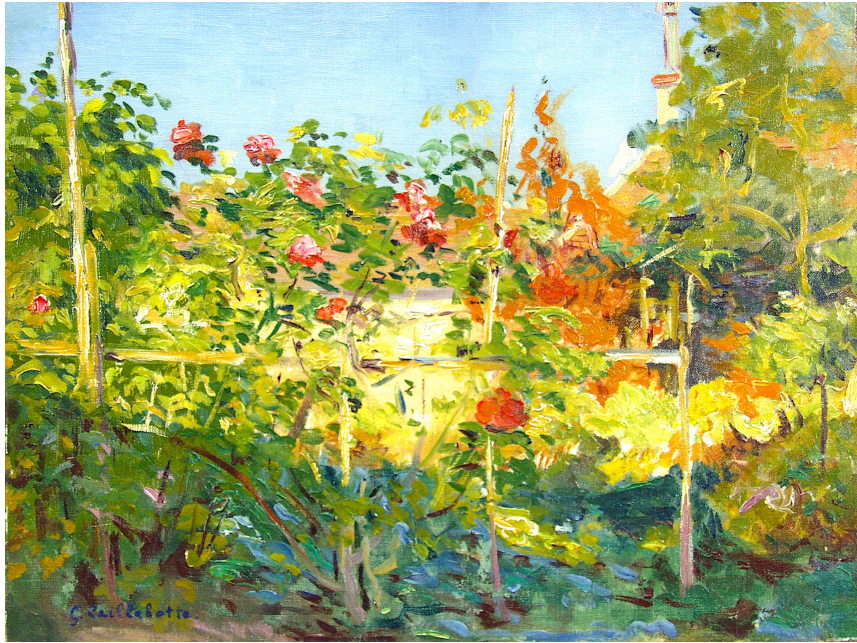




**Maisons à Argenteuil (1883) CP**

**Arbre en Fleur (1882) Musée d'Orsay**

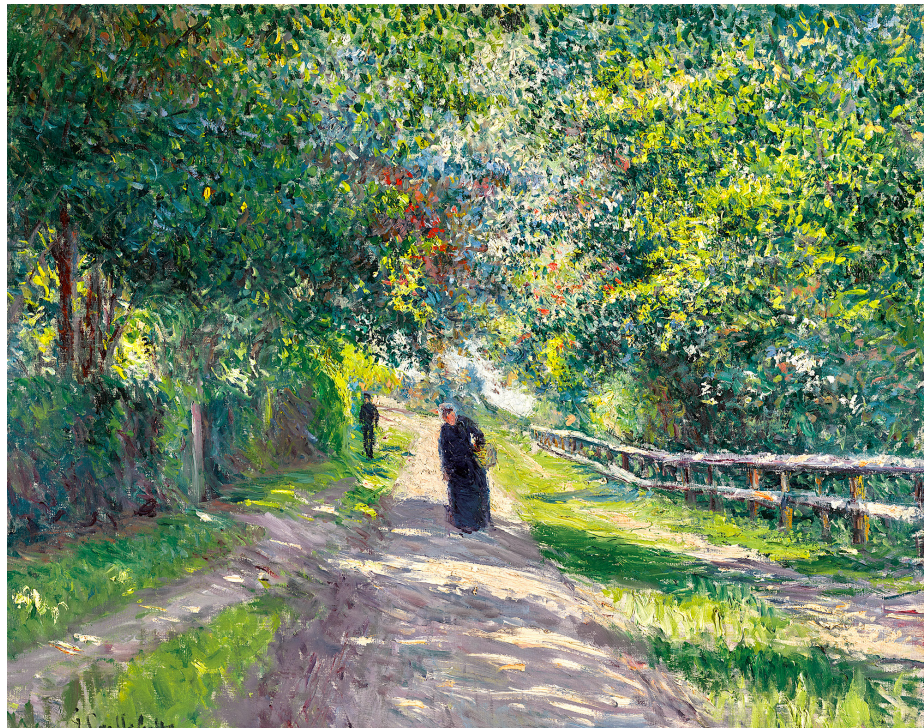




**Jardin à Trouville (1882) Wallraf-Richartz-Museum**

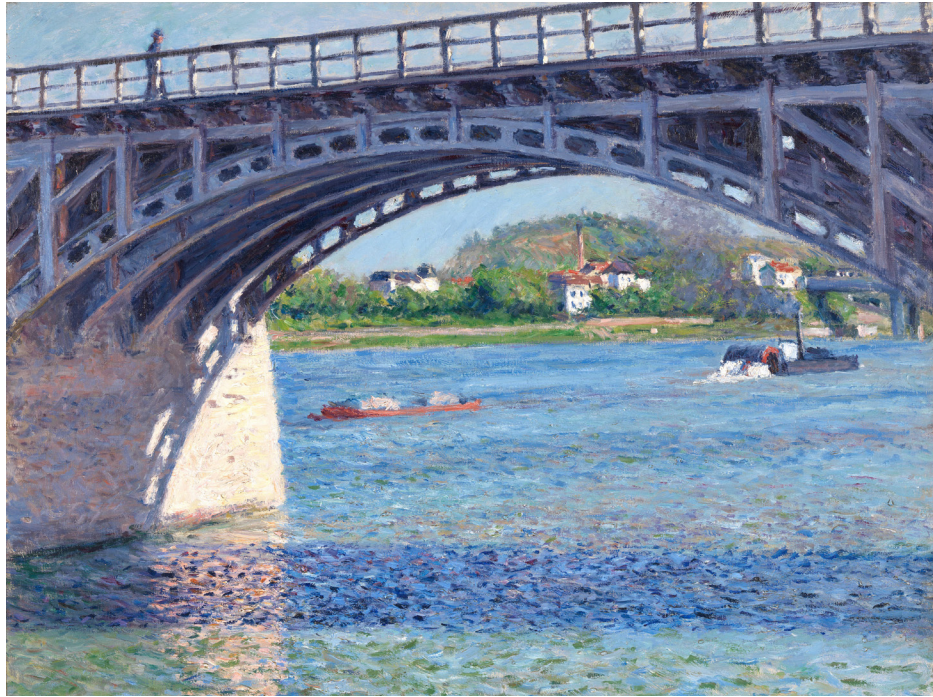


**Un Jardin à Trouville (1882) CP**



**Allée de la Villa de Fleurs à Trouville (1883) CP**





**Le Pont d'Argenteuil (1883)** Museum Barberini

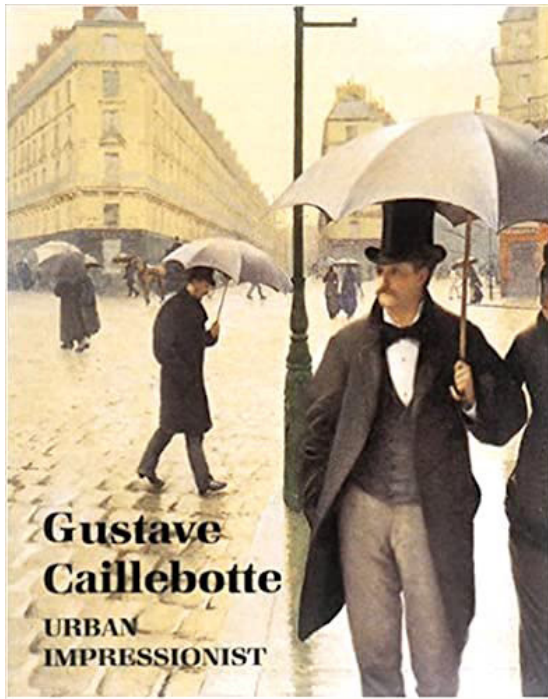


**Le Petit Bras de la Seine en Automne (1890)** Fondation Bemberg

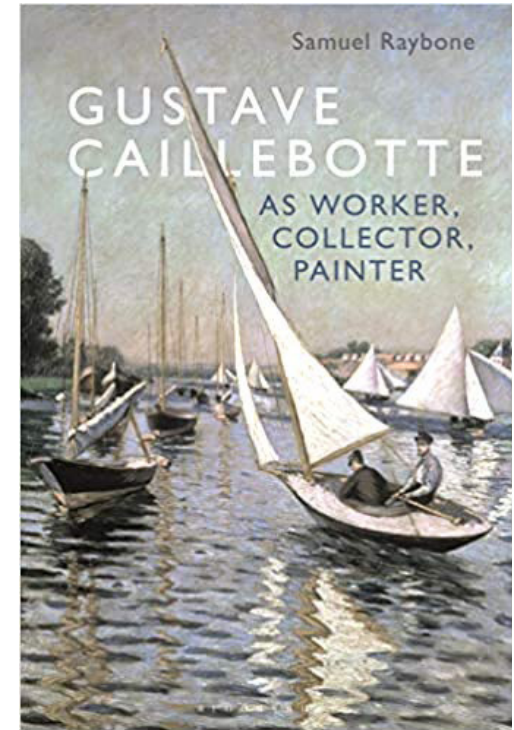


**Tournesols au Bord de la Seine (1885-86)**  
Fine Arts Museums, San Francisco



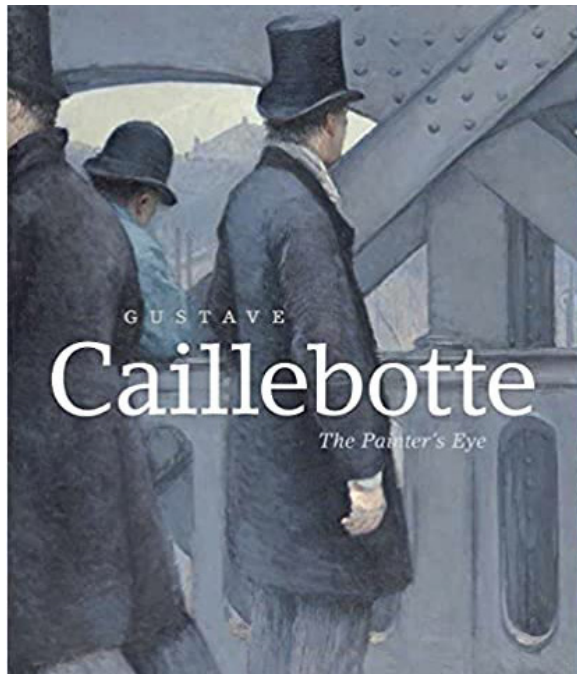


(??) Ralph Gleis (Ed)

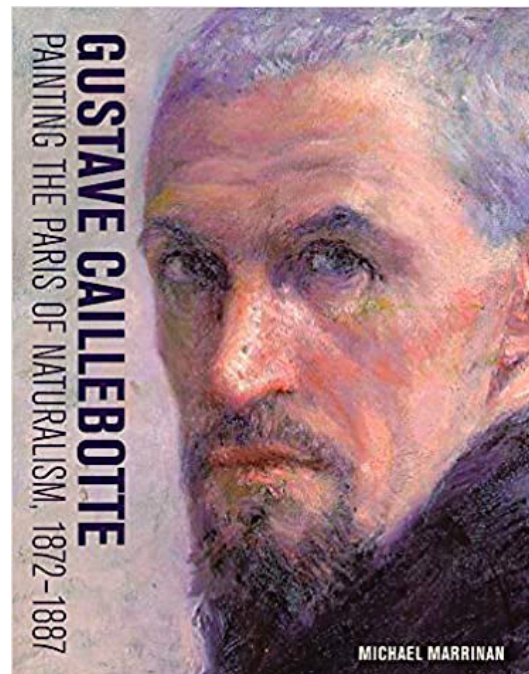


(2020) Samuel Rathbone

(1995)  
Anne Distel



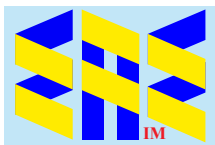
(2015)  
Morton  
and  
Shackleford



(2017) Michael Marriman



Grateful acknowledgement is made to Wikipedia and Wikipedia Commons and all institutions providing high quality access to copies of paintings in the public domain in countries where the copyright term is the author's life plus 70 years or fewer.



[eaeinternal.com](http://eaeinternal.com)

**EurAsian Education** (Internal)