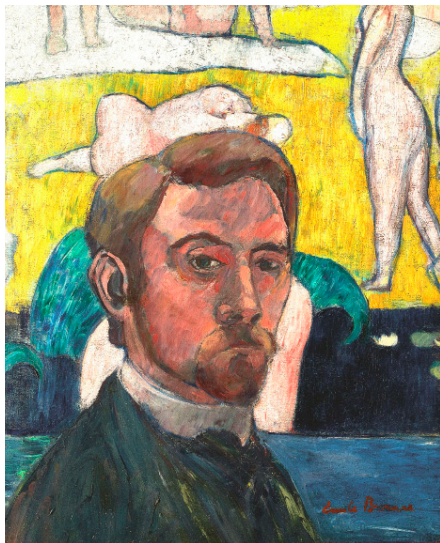


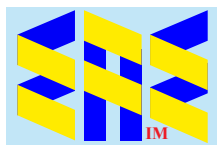
# Émile Bernard (1868-1941)



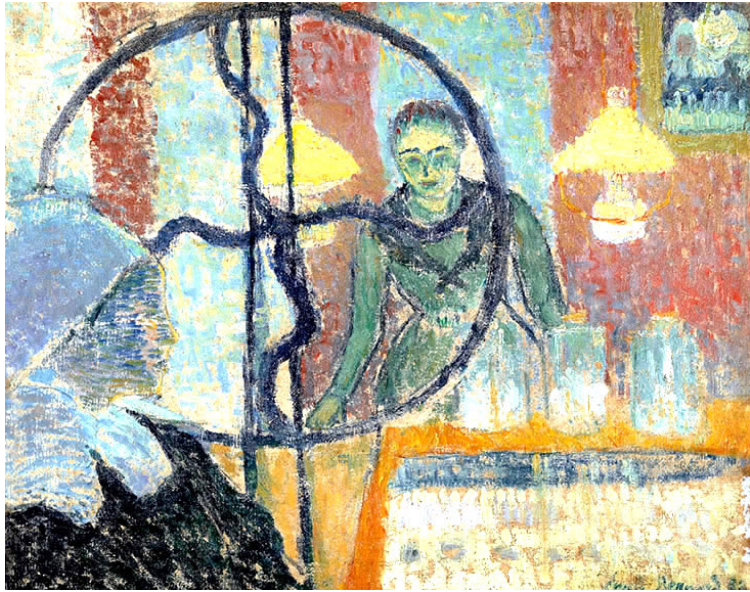
**Autoportrait aux Nus (1889)**  
Musée d'Orsay



**Autoportrait (1901)**  
Palais des Beaux-Arts de Lille

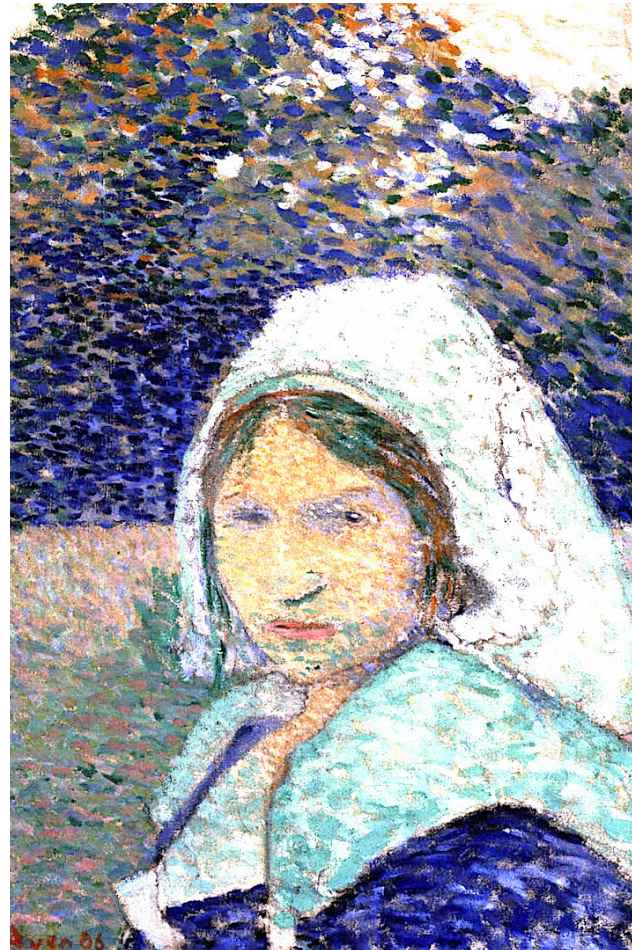
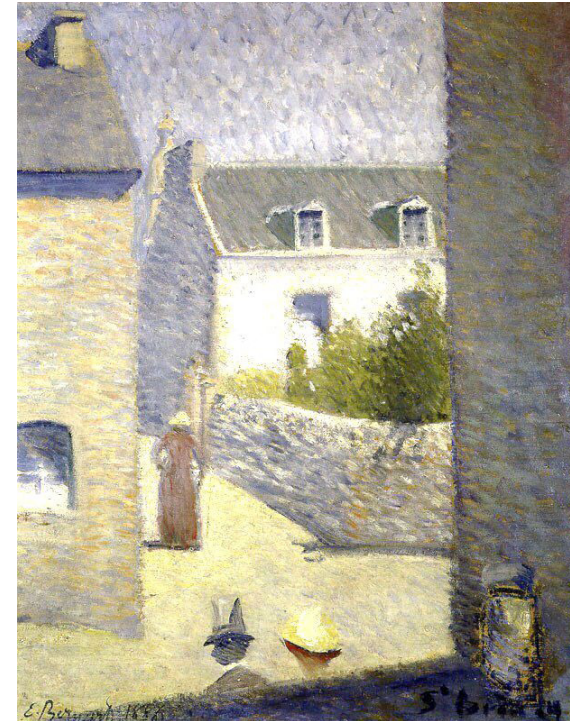


Compiled by Toon Senta

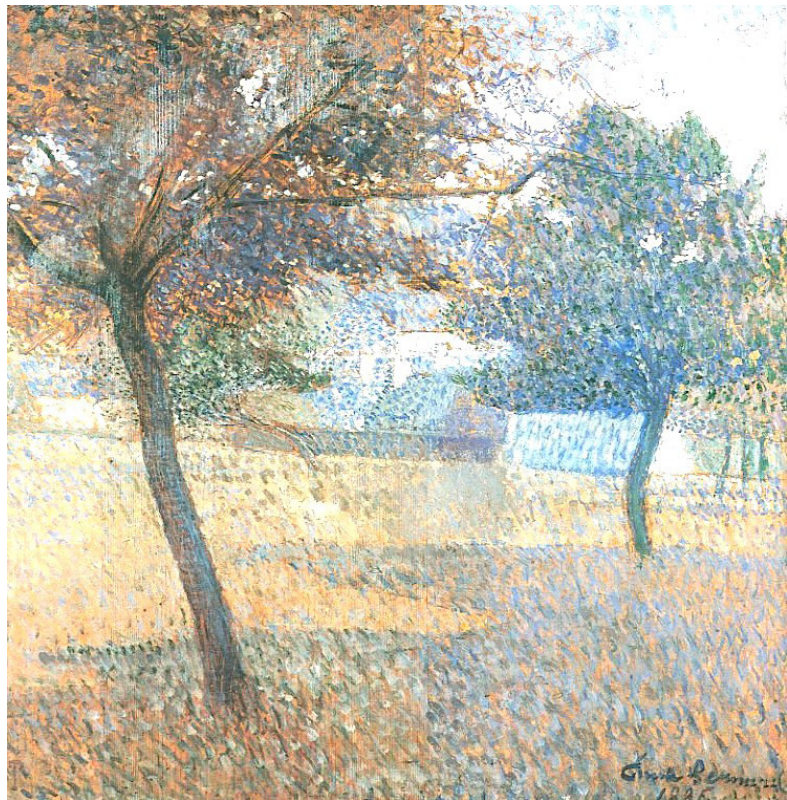


**Interiere à Pont Aven**  
(1887) CP

**Rue à Saint-Briac**  
(1886) CP

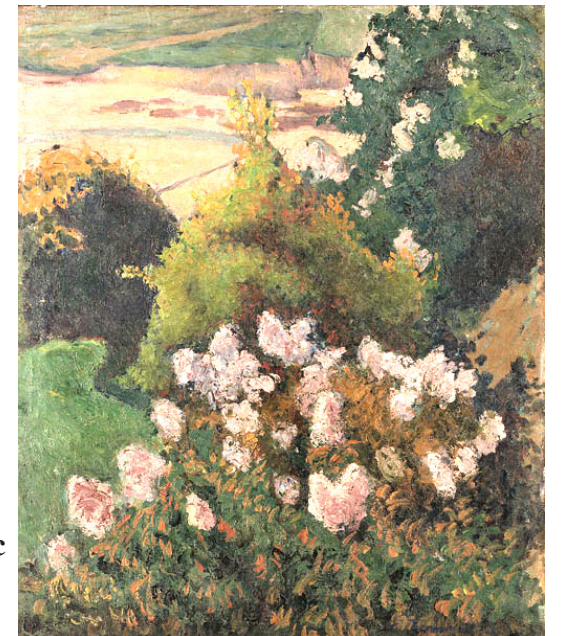


**Jeune Bretonne à Pont-Aven** (1886) CP



**Verger à Pont Aven**  
(1886) CP

**Paysage Saint-Briac**  
(1886) CP





**Quai à Asnières (1886) CP**



**La Porte d'Asnières – Le Char de Foin (1886) CP**



**Ferme à Pont-Aven (1886) CP**



**Quai de Clichy sur la Seine (1886)**  
Saint-Germain-en-Laye, Musée départemental Maurice Denis



**Iron  
Bridges  
at Asnières  
(1887)  
MOMA**



**Paysage, Saint-Briac (1887) CP**



**Le Port à Saint-Briac (1887) CP**



**Buckwheat Harvesters (1888) CP**



**Breton Women in the Meadow  
(1888) Musée d'Orsay**

**Breton Women Attending a Pardon**  
(1892) Dallas Museum of Art



**Les Bretonnes aux Ombrelles** (1892) Musée d'Orsay

**Breton Women on a Wall** (1892)  
Indianapolis Museum of Art





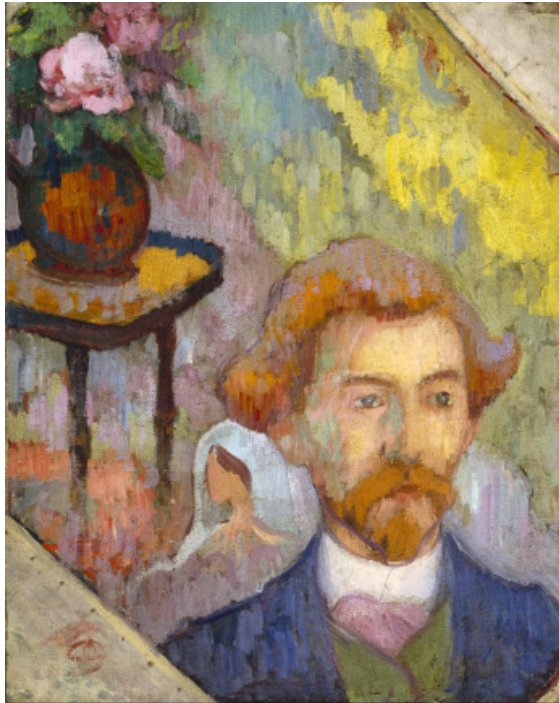
Self-portrait with Portrait of Gauguin (1888) Van Gogh Museum



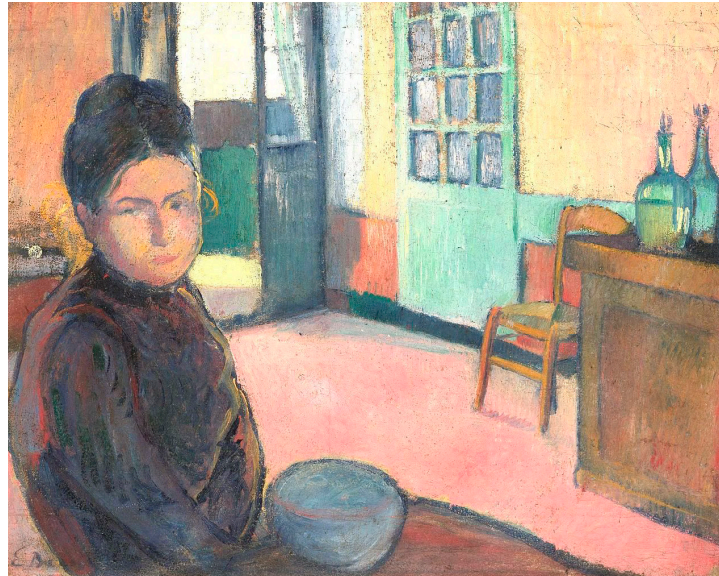
Brothel Scene, for Vincent (1888) Van Gogh Museum



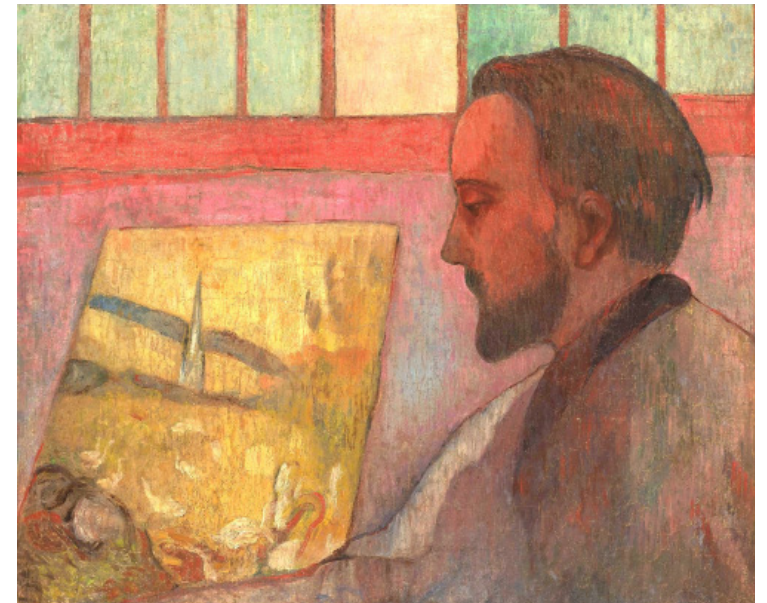
Le Tabarin, Cafe Cabaret (1889) CP



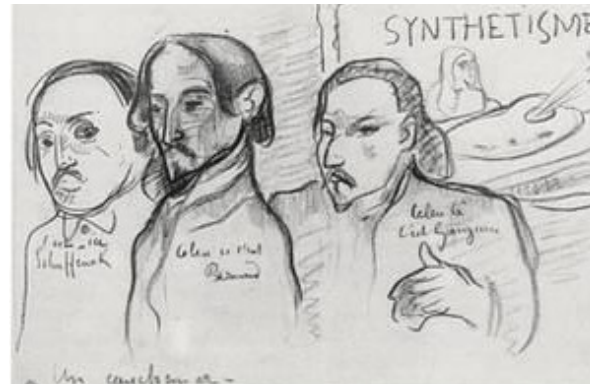
Émile Bernard (Schuffenecker 1889) CP



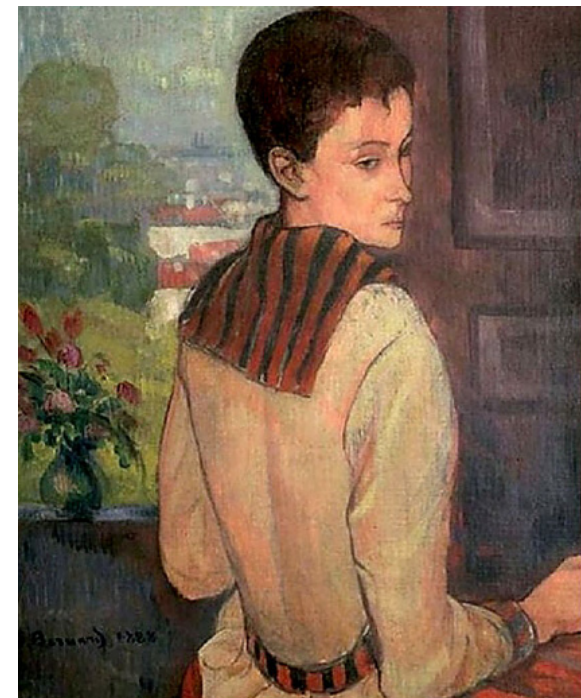
Madame Schuffenecker (c1889) CP



Émile Schuffenecker (1888) CP

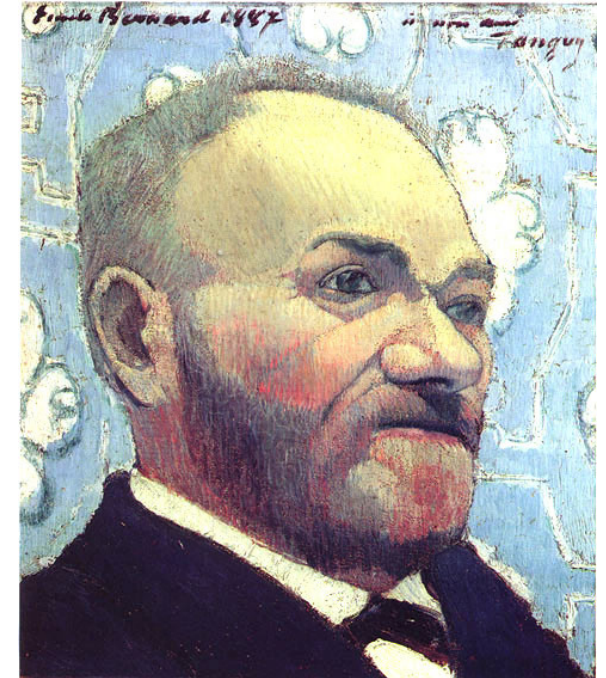


Le Cauchemar, Volpini Exhibition (1889) CP

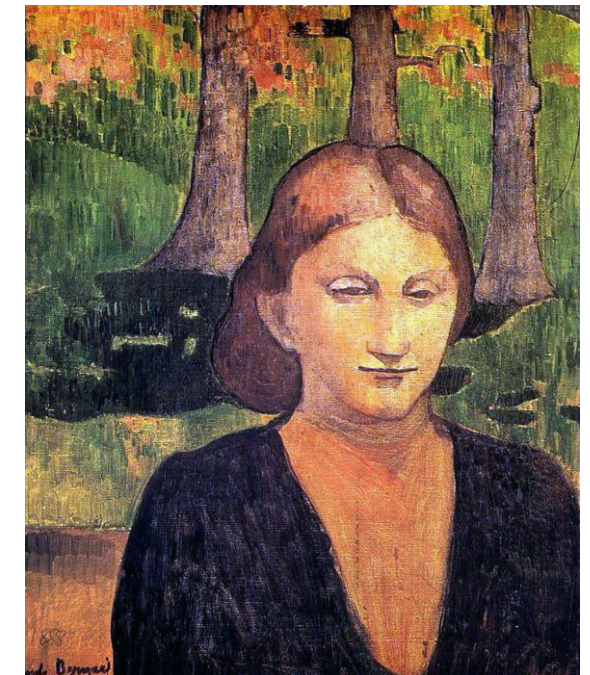


Madame Schuffenecker (1888) CP

**Portrait du Père Tanguy (1887)** Kunstmuseum Basel



**Madeleine au Bois d'Amour (1888)**  
Musée Toulouse-Lautrec



**Portrait de ma Soeur, Madelein (1888)**  
Musée Toulouse-Lautrec





Nature Morte aux Pommes et aux Pots Bretons (c1887) CP



La Cafetière Bleue (1888) Kunsthalle Bremen



Nature Morte aux Pommes et Comptiers (1892) CP



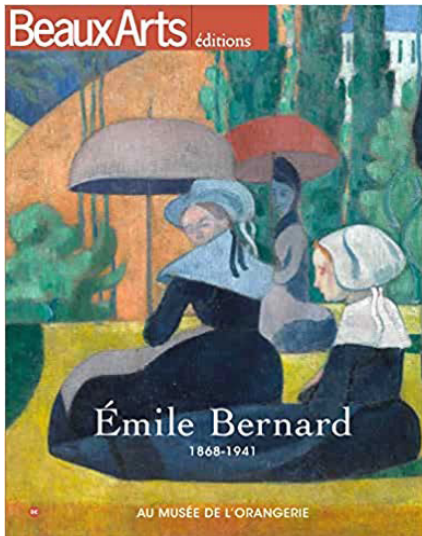
**Portrait of Marie Lemasson**  
(1892) Israel Museum



**Mother and Child (1898) CP**



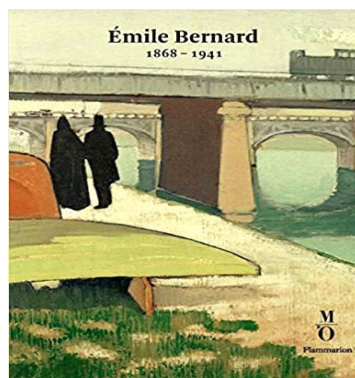
**Self Portrait with Roses (1897) Rijksmuseum**



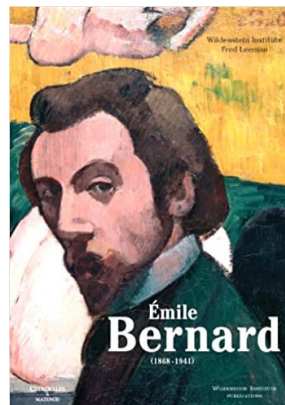
(2014) Collective



**The Three Races**  
(1898) CP

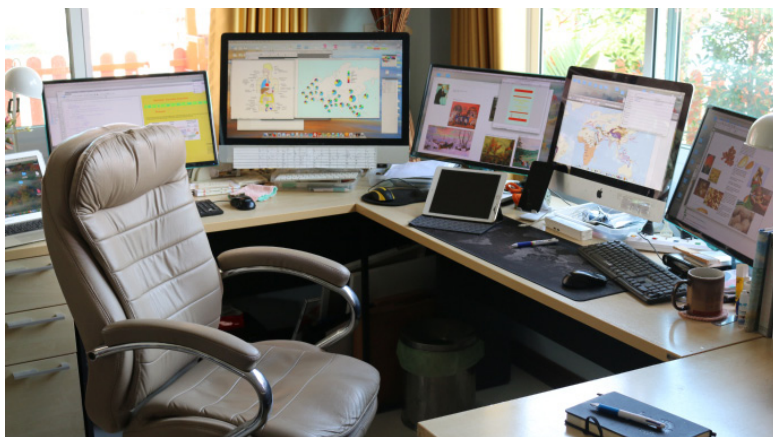


(2014) Collective

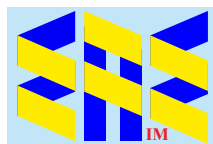


(2013) F Lehmann

Grateful acknowledgement is made of Wikipedia and Wikipedia Commons and all institutions and private individuals providing high quality access to copies of paintings in the public domain in countries where the copyright term is the author's life plus 70 years or fewer.



[eaeinternal.com](http://eaeinternal.com)



**EurAsian Education** (Internal)