

Louis Anquetin

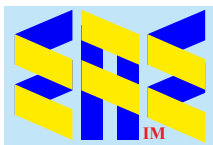
(1861-1932)



At Cormon Studio (c1886)



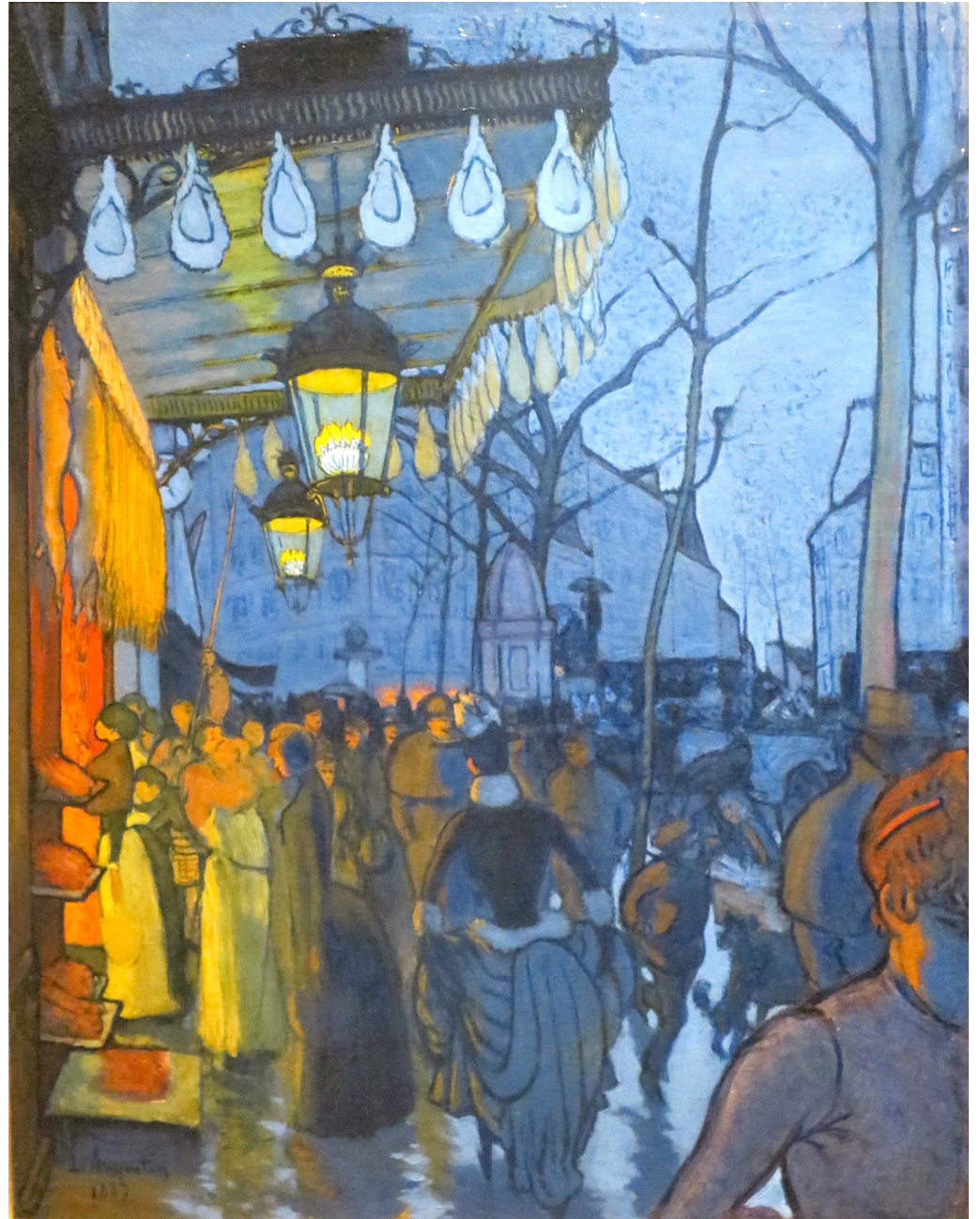
Autoportrait à la pipe (1892) CP



Compiled by Toon Senta



L'Intérieur de Chez Bruant: Le Mirliton (1886-87) CP



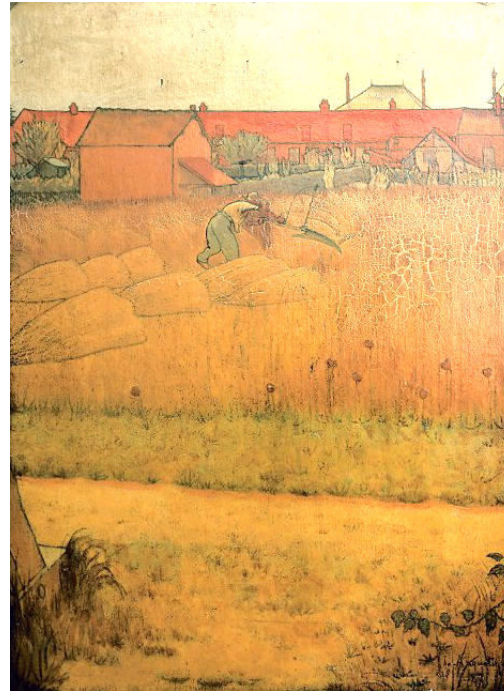
**Au Moulin Rouge
(c1893) CP**

**Avenue de Clichy, Cinq Heures du Soir (1886-87)
Wadsworth Atheneum Museum of Art**





At the Circus (1887)
Montreal Museum of Fine Arts



The Reaper (1887) CP



Toulouse-Lautrec (1889)
Musée Toulouse-Lautrec



Emile Bernard (c1887) CP



Le Pont de l'Europe (1889) CP



**Gust of Wind: Bridge over the Seine
(1889) Kunsthalle, Bremen**

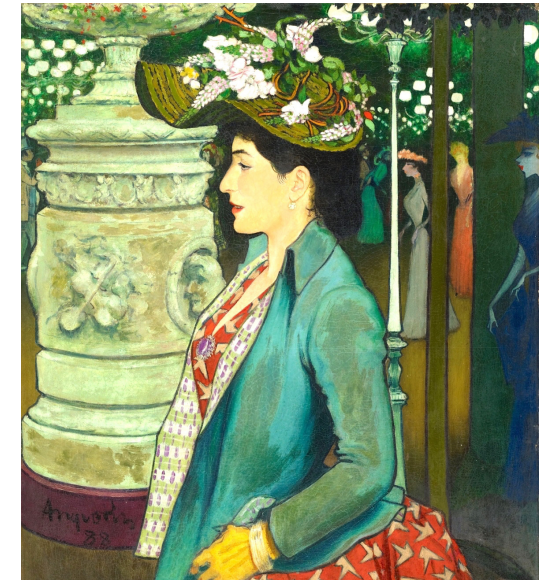




Portrait de Juliette Vary (1891) CP



Femme à sa Toilette (1889) CP



Élégante à l'Élysée Montmartre (1888) Art Institute of Chicago



Deux Femmes (1889) CP





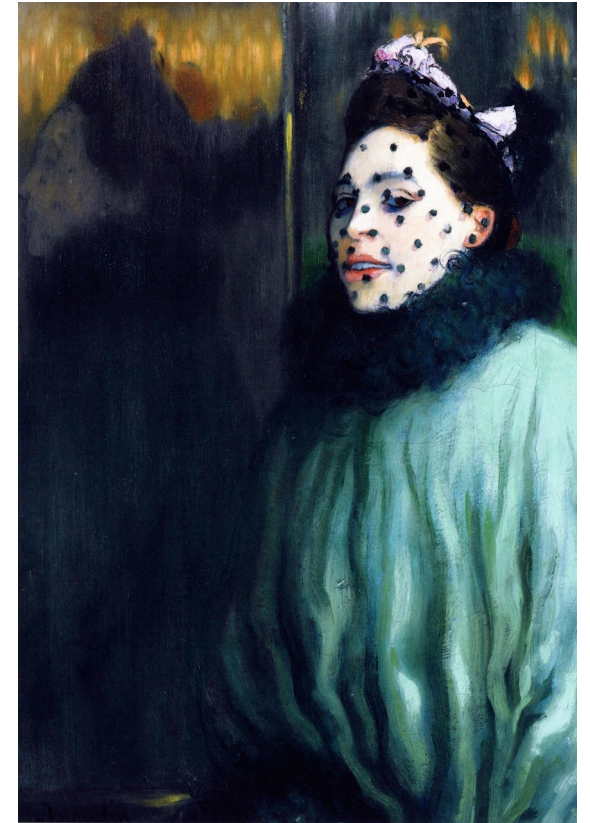
Woman with Umbrella (1891) CP



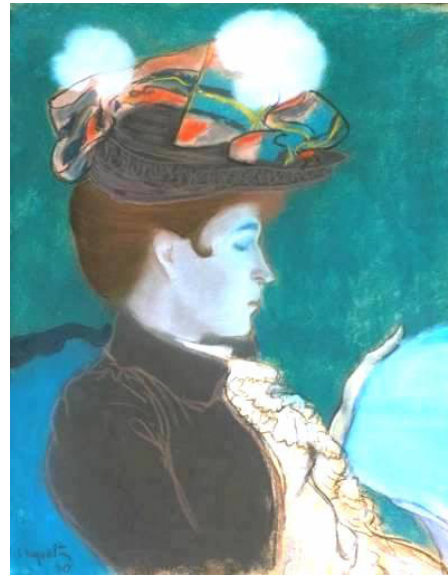
Étude de femme (1890)
Musée des Beaux Arts; Tournai



Woman at the Champs-Élysées by Night (1889-93) Van Gogh Museum



Femme a la Voilette (1891) CP



Reading Woman (1890) CP



Dufay (1895) Les Maîtres de l'Affiche



Woman on the Street (1892) Musée d'Orsay



Au foyer du théâtre (1892) CP

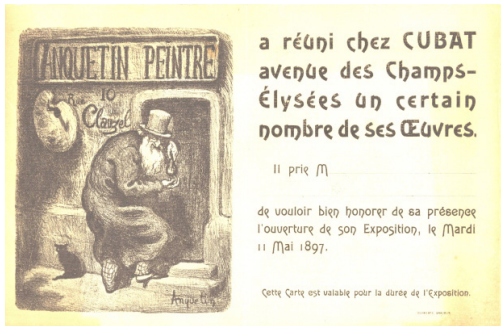


**Madeleine Bernard (1892)
Rhode Island School of
Design Museum**



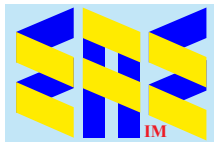
Le Buveur (1892) CP

**Rubens, sa technique;
analyse des tableaux
de la galerie Médicis
au Louvre
(1924)
Éditions Nilsson**



Anquetin: la Passion d’Etre Peintre ; [ce catalogue accompagne une exposition du mardi, 26 mars au samedi, 20 avril 1991, Galerie Brame & Lorenceau]

Grateful acknowledgement is made to Wikipedia and Wikipedia Commons and all institutions providing high quality access to copies of paintings in the public domain in countries where the copyright term is the author’s life plus 70 years or fewer.



eaeintermal.com

EurAsian Education (Internal)