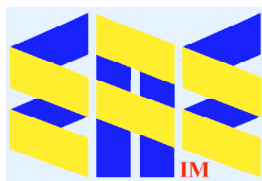


Henri Gervex (1852-1929)

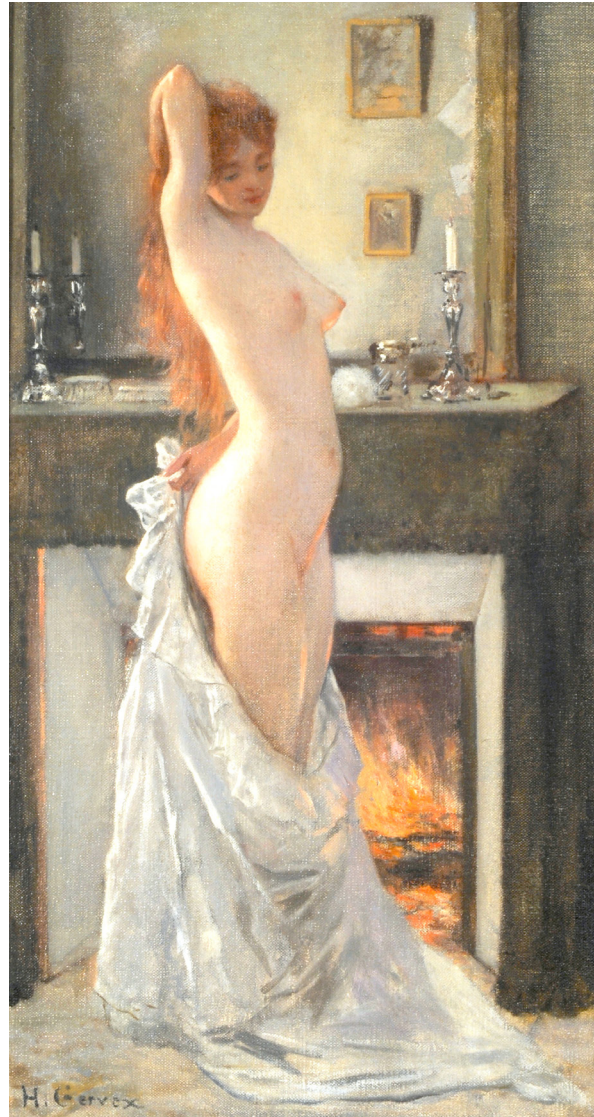
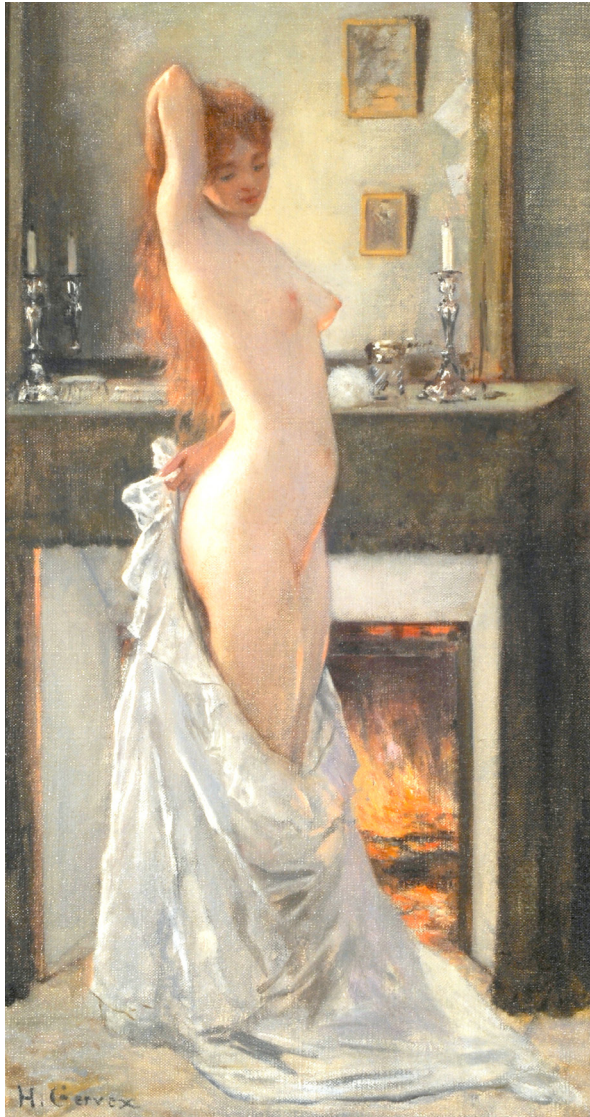


(1902) Revue illustrée



Compiled by Toon Senta

The Birth of Venus (1863) Petit Palais



Parisien (c1870)
Museo Nacional de Bellas Artes

Rolla (1878) Musée des Beaux-Arts de Bordeaux



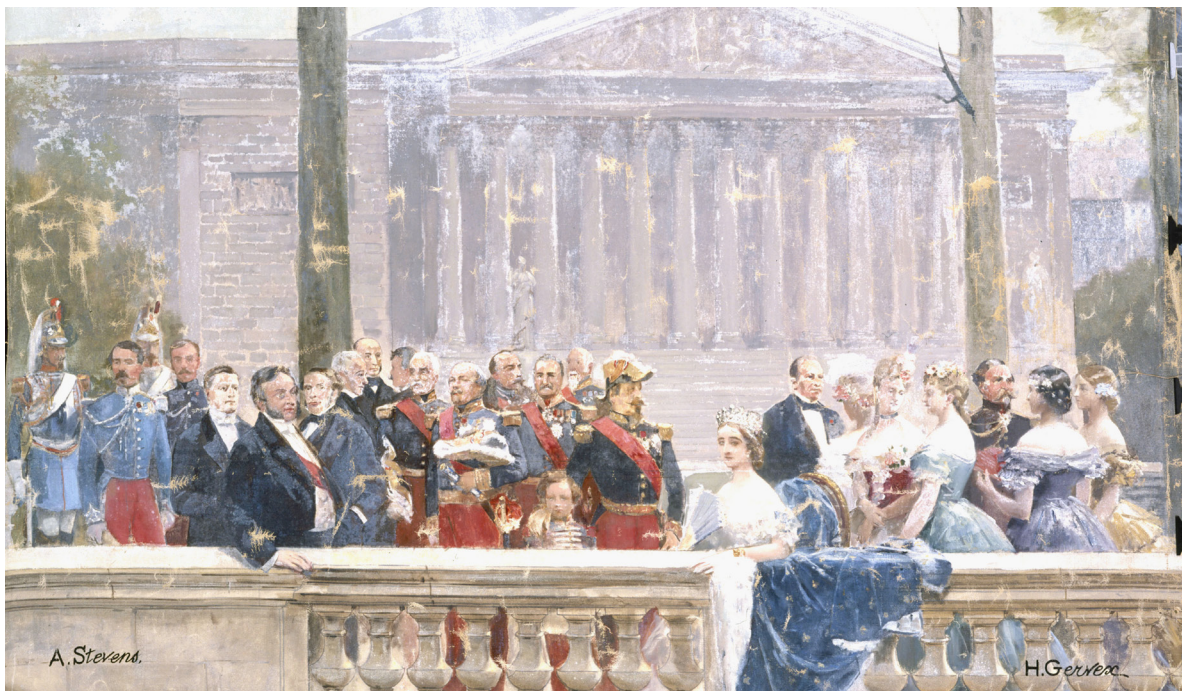


A Session of the Painting Jury (<1885) Musée d'Orsay

Painters

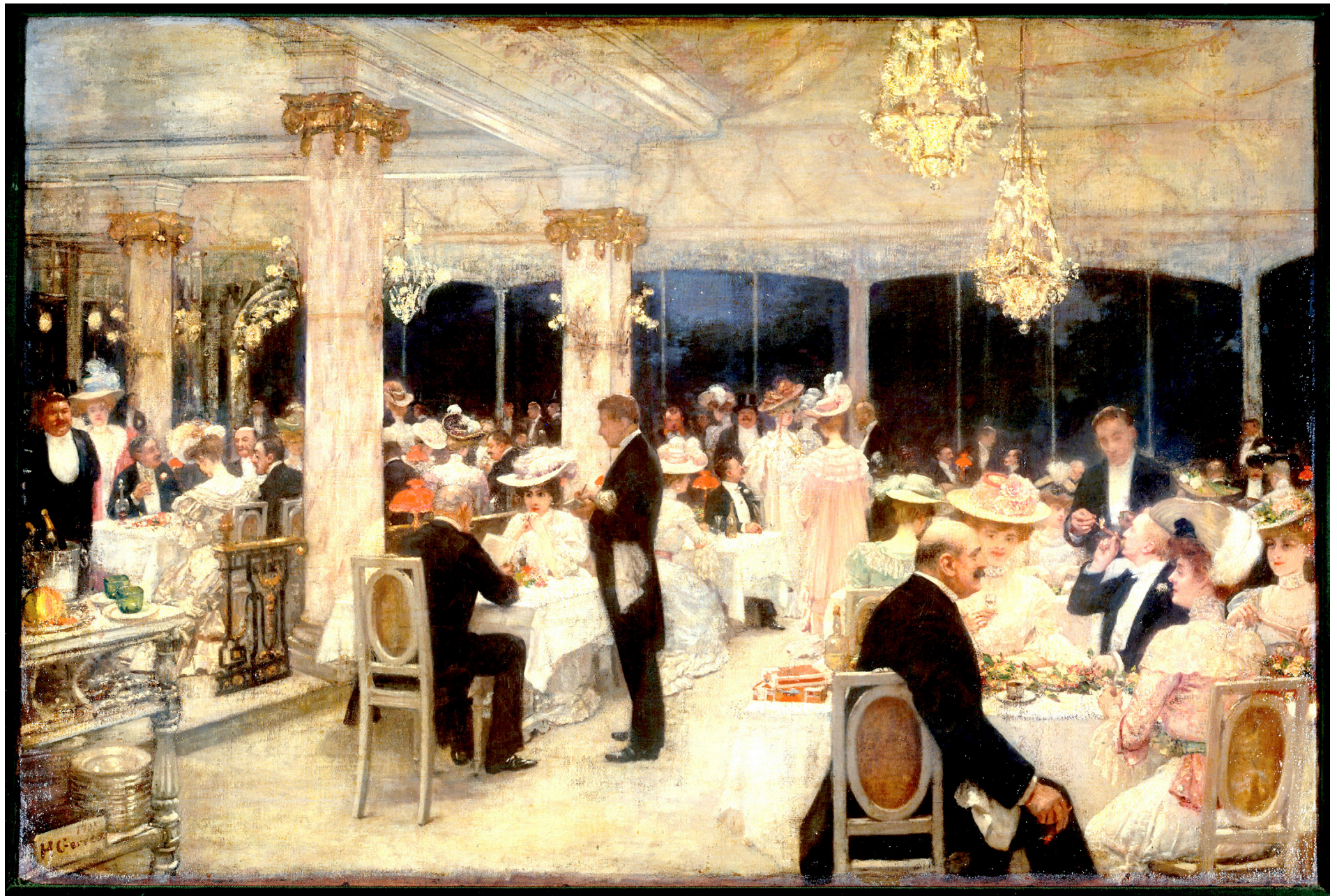


President Sadi Carnot surrounded by Personalities



Napoleon III and Royalty

History of the Century (1889)
Musée des Beaux-Arts de la Ville de Paris, Petit Palais



A Grand Prix evening at the Armenonville Pavilion (1905) Musée Carnavalet

An Evening at Pré Catelan (c1909) Musée Carnavalet



Island of Puteaux (c1907) Musée Carnavalet

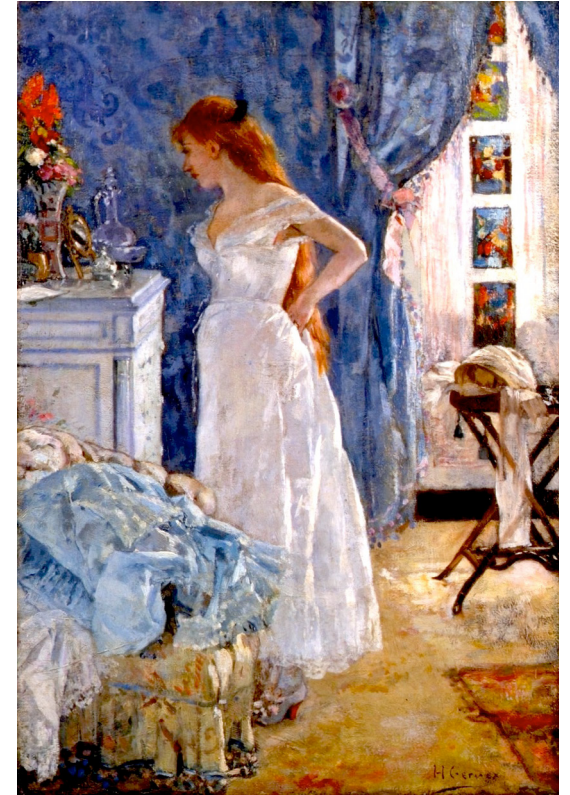


Five O'Clock at Paquin (1906) CP





One Tuesday Evening at Madeleine Lemaire's (c1910) Musée Carnavalet



Dressing (1878) CP



Madame de Lorgeril (1902) Musée Carnavalet

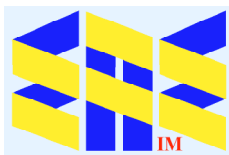


**Woman with Fan (1879) MezzoSopranistin Vera Nimidoff (c1910) CP
Musée Carnavalet**



Grateful acknowledgement is made to Wikipedia and Wikipedia Commons and all institutions and private individuals providing high quality access to copies of paintings in the public domain in countries where the copyright term is the author's life plus 70 years or fewer.

Jean-François de Canchy (1992)



EurAsian Education (Internal)