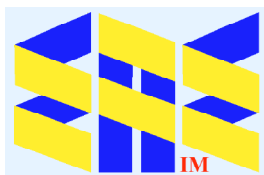


Gaston Bussi re

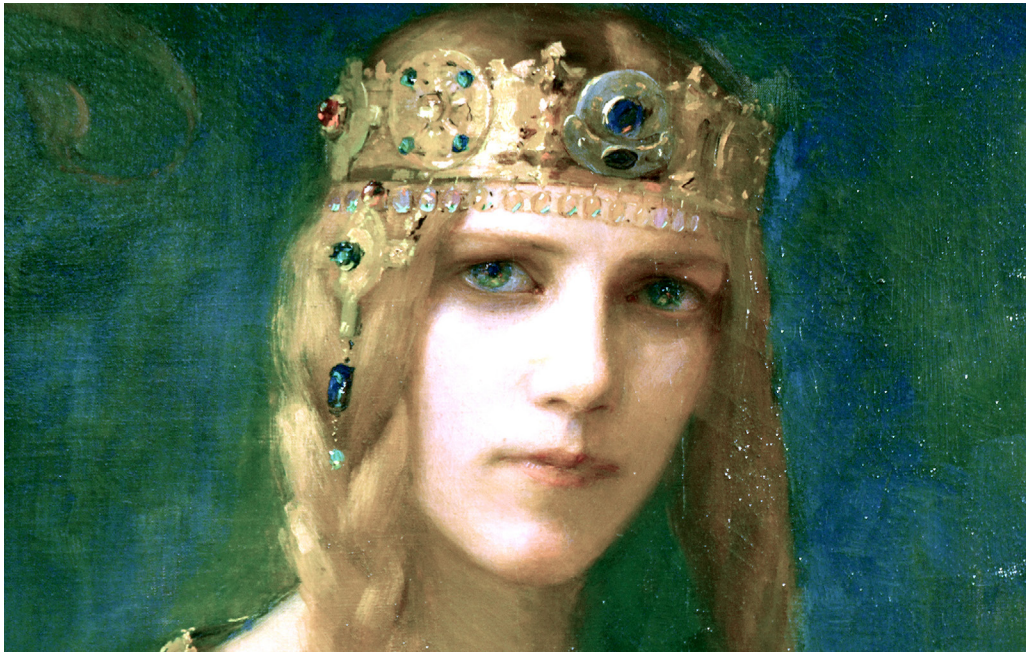
(1862-1929)



(c1900)



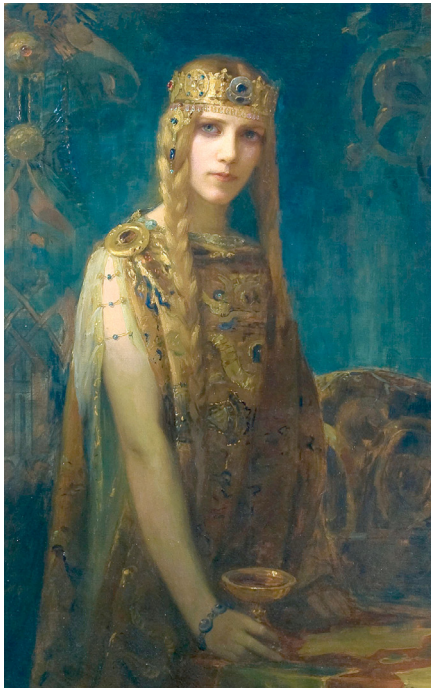
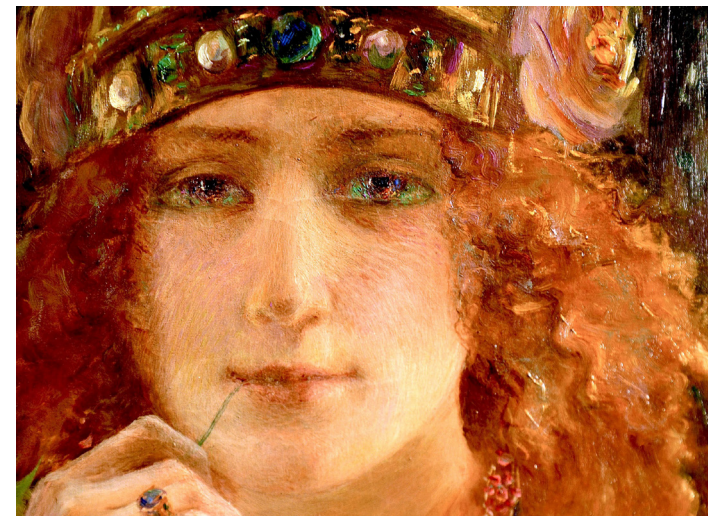
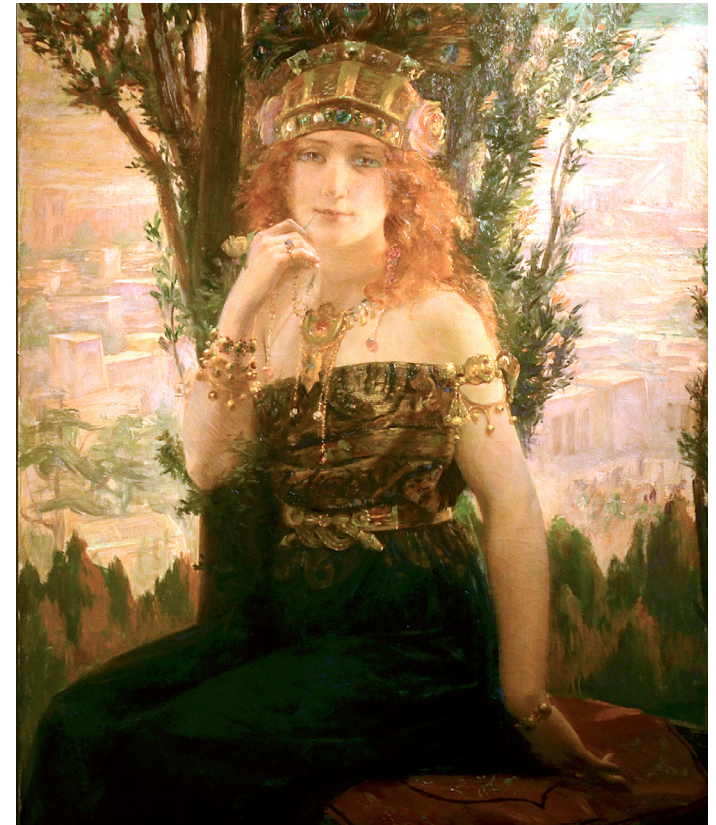
Compiled by Toon Senta



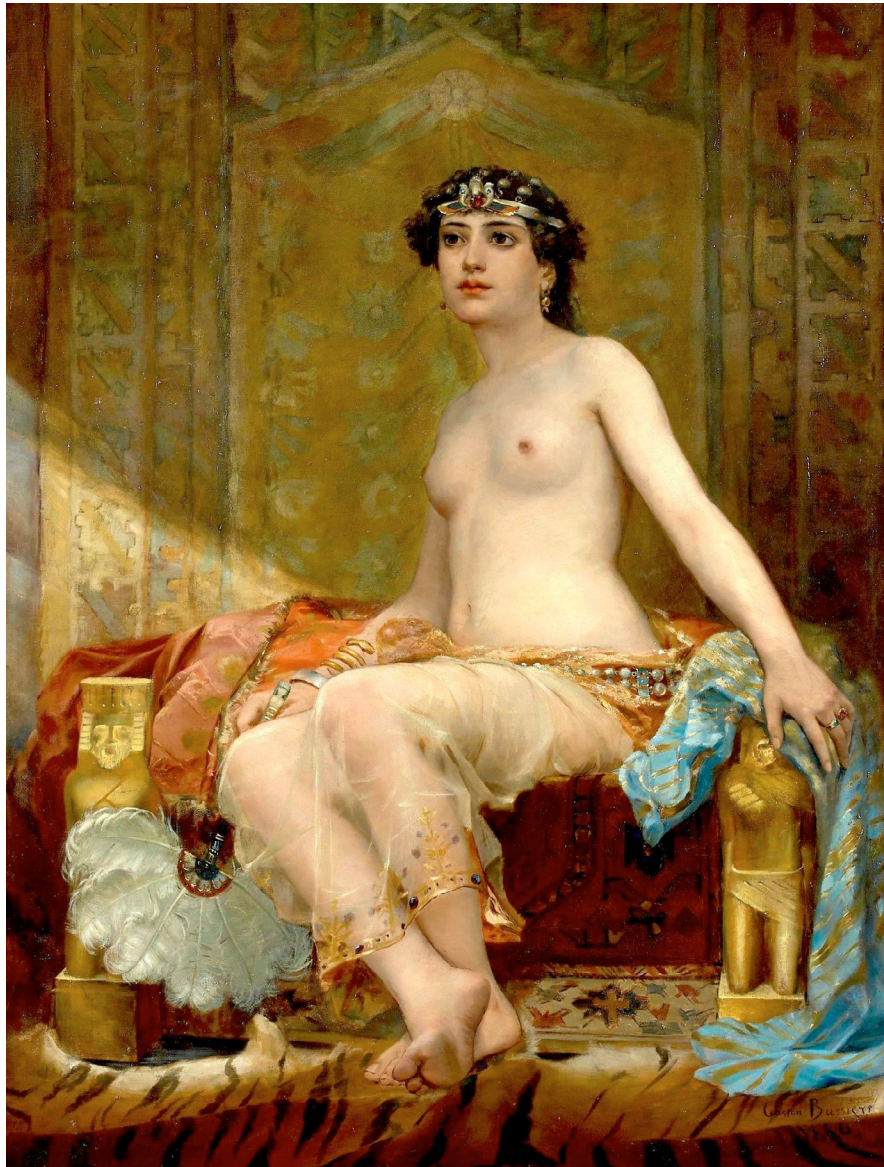
Cup, Iseult
(1911)
Musée des
Ursulines
de Mâcon

Helen of Troy
(1895)
Musée des
Ursulines
de Mâcon

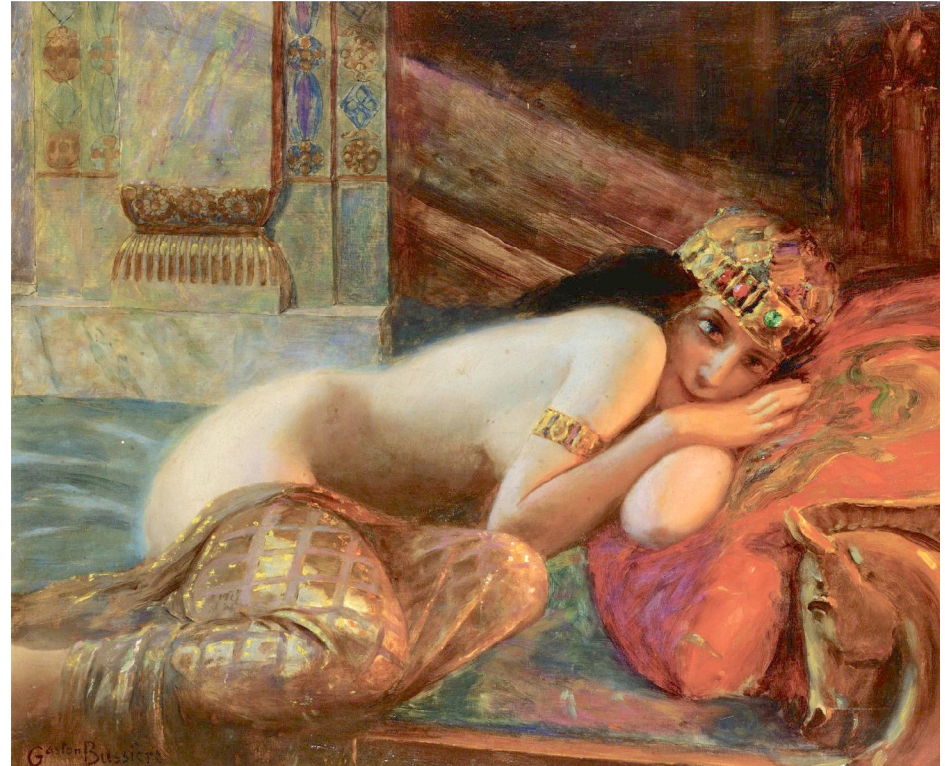
**Elsa and
Lohengrin**
(1910)
Musée des
Ursulines
de Mâcon



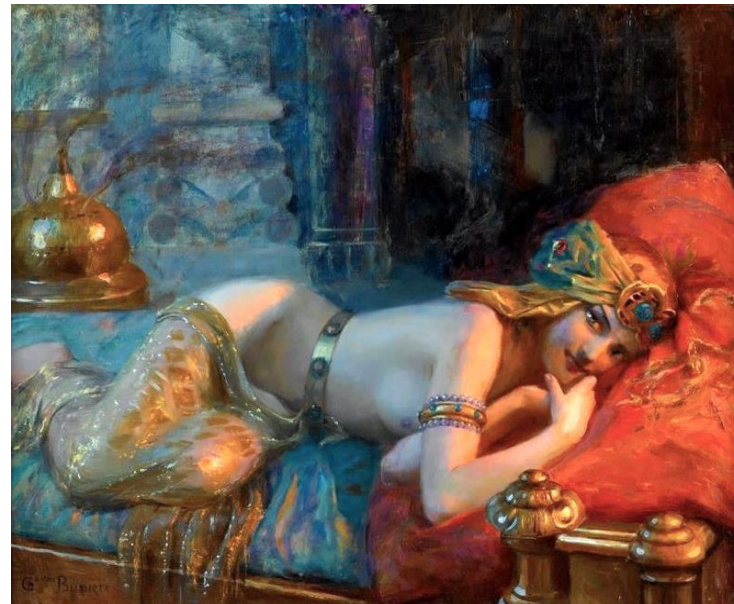
Oriental Beauty (????) CP

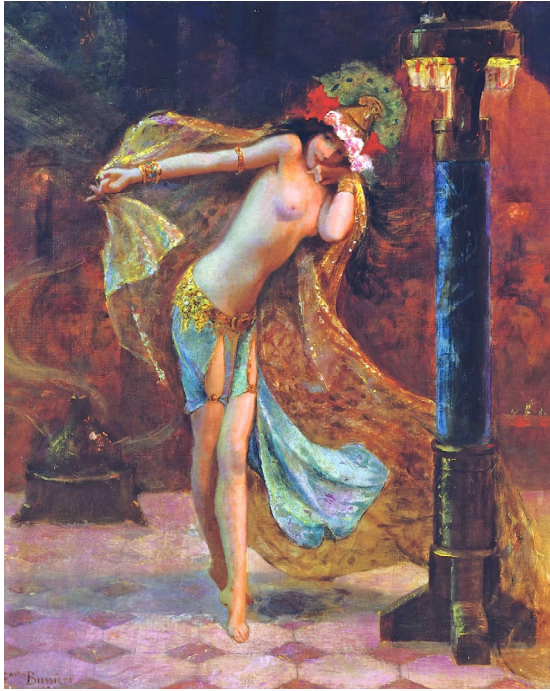


Tahoser (1886) CP



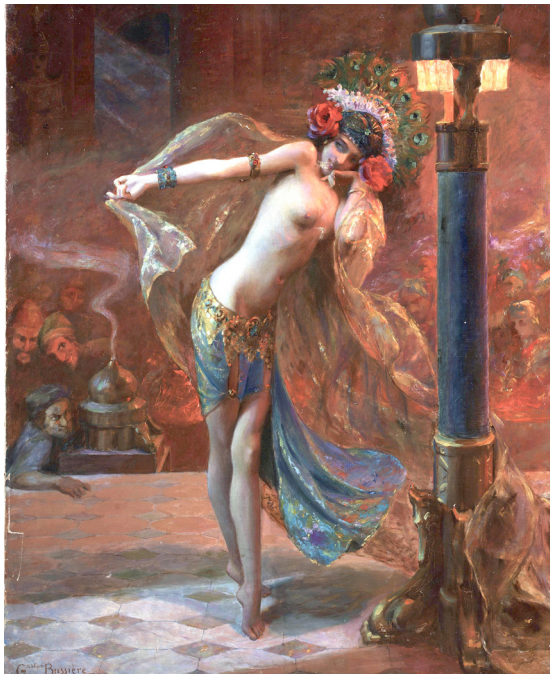
Exotic Beauty (????) CP





Salome (1926) CP

Exotic Dancer (????) CP

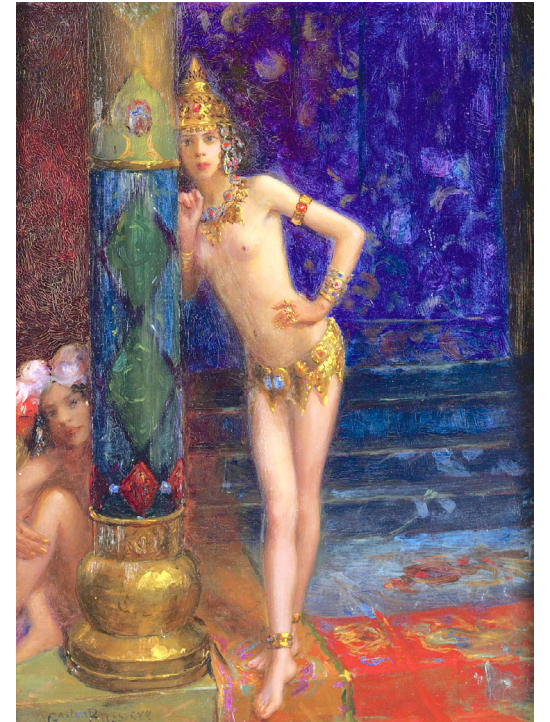


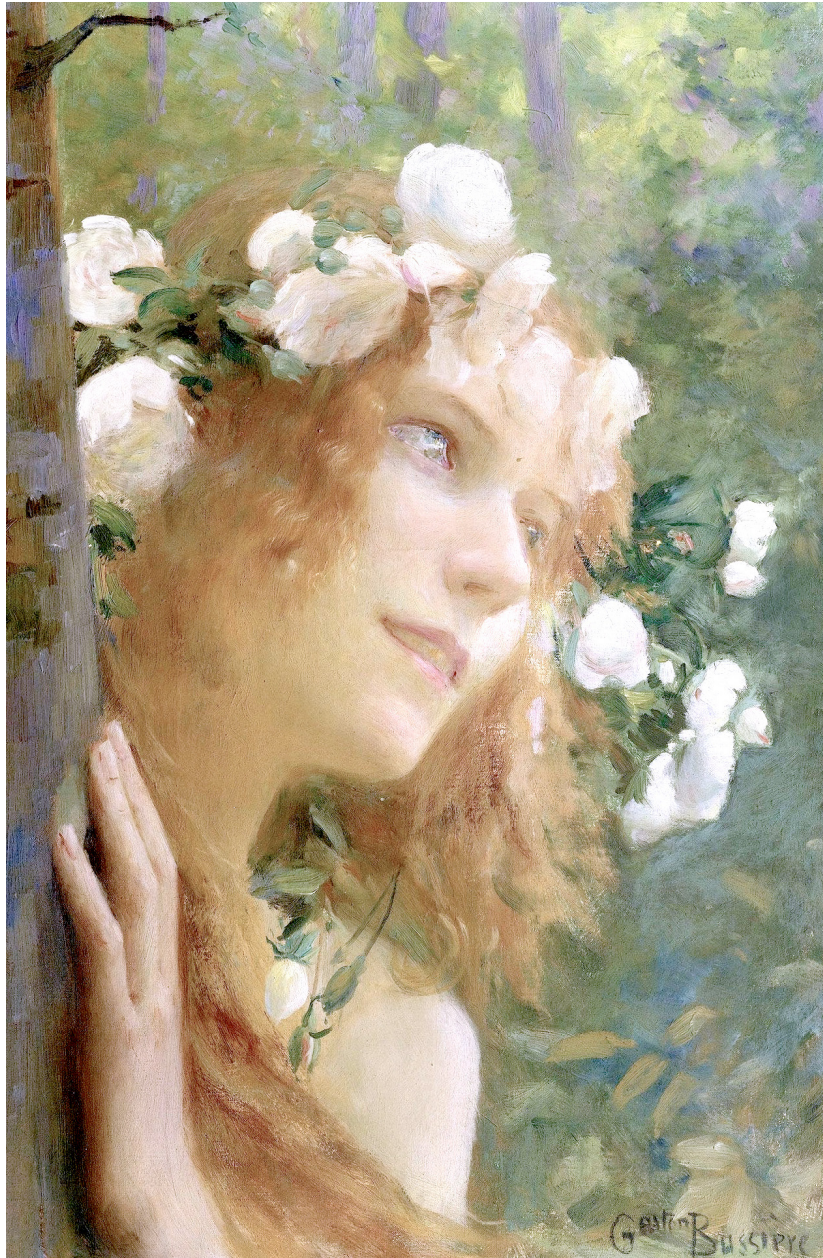
Dance of the Seven Veils (1925) CP



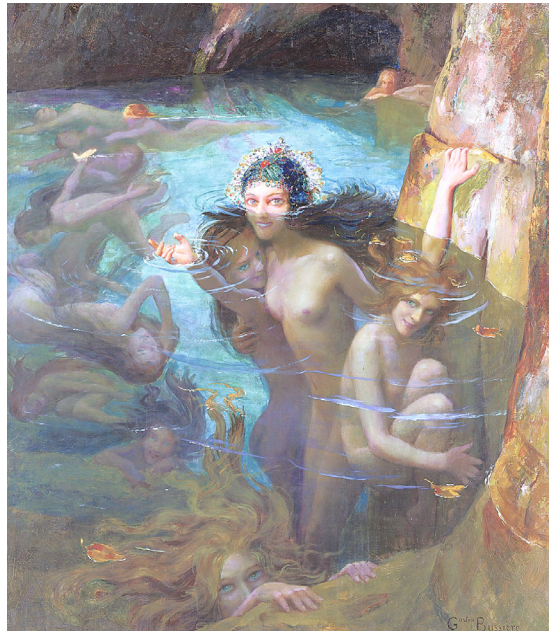
Exotic Dancers (c1880) CP

Two Dancers (1912) CP





Nymph (c1900) CP



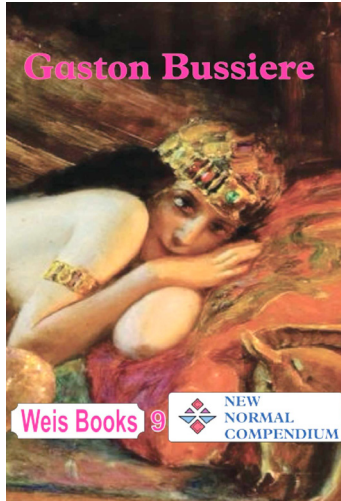
Sea Nymphs in a Grotto (1924) CP



**Nereides
(1927) CP**



Water Nymph (c1900) CP



Grateful acknowledgement is made to Wikipedia and Wikipedia Commons and all institutions and private individuals providing high quality access to copies of paintings in the public domain in countries where the copyright term is the author's life plus 70 years or fewer.

Arthur Weis (2020)



EurAsian Education (Internal)