

French Neoclassical- Orientalists

Ingris, Jean-A-Dominique (1780-1867)

Delacroix, Eugène (1798-1863)

Benouville, François-Léon (1821-1859)

Gérôme, Jean-Léon (1824-1904)

Nouÿ, Jean-J-Antoine du (1842-1923)

Benjamin-Constant, JJ (1845-1902)

Cormon, Fernand (1845-1924)

Richter, Édouard Frédéric (1856-1929)

Chasseriau, Théodore (1856-1929)

Bompard, Maurice (1857-1935)

Bussière, Gaston (1862-1929)

Roche-grosse, Georges (1859-1938)

Leroy, Paul (1860-1942)

Dinet, Nasreddine (1861-1929)

Tanoux, Henri Adrien (1865-1923)



Compiled by
Toon Senta

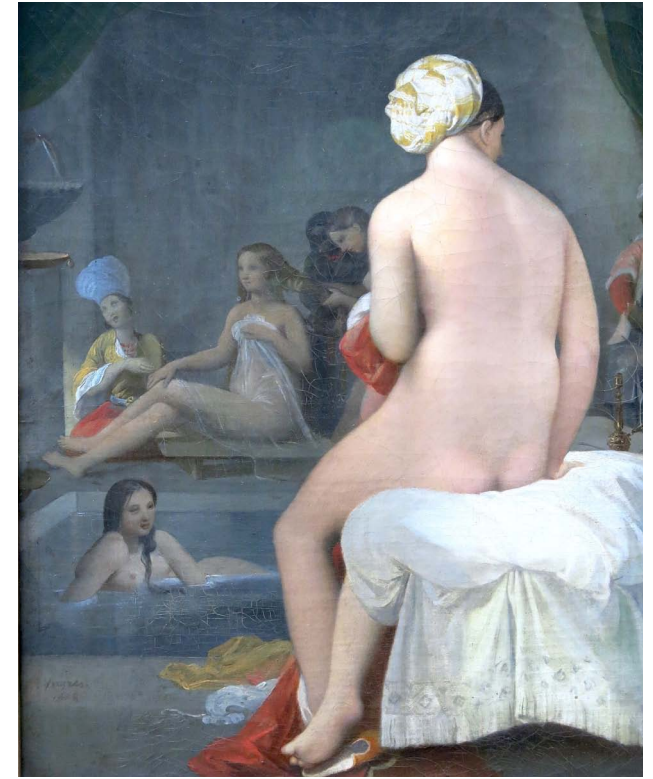


Odalisque and Slave
(1839-40) Fogg
Museum

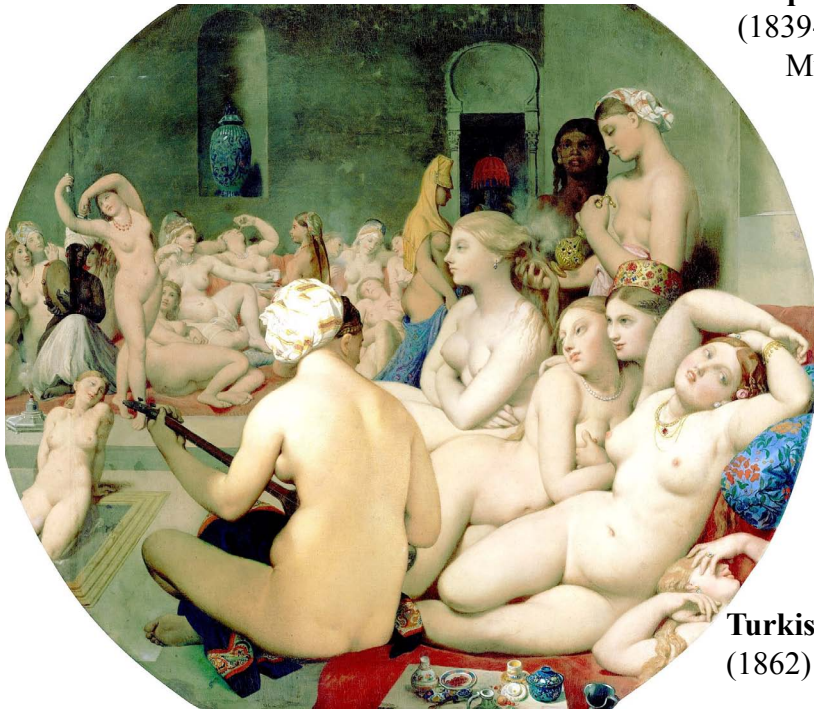
Jean August Dominique Ingres

(1780-1867)

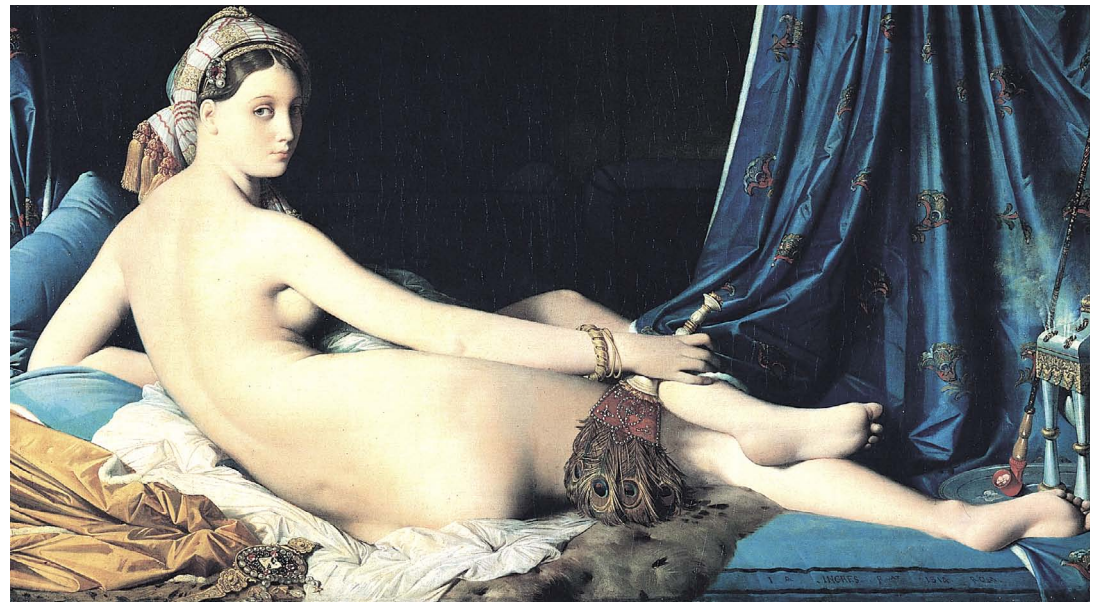
**The Little Bather;
Harem interior**
(1814)
Louvre Museum



Grande Odalisque (1814)
Louvre Museum



Turkish Bath
(1862) Louvre

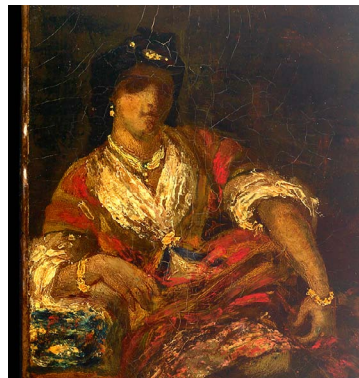




Woman of Algier (1854)
Kunstmuseum Winterthur



Jew in Tangier (1835) CP



**Study for
Women of
Algiers
(c1834) CP**

Eugène Delacroix (1789-1863)

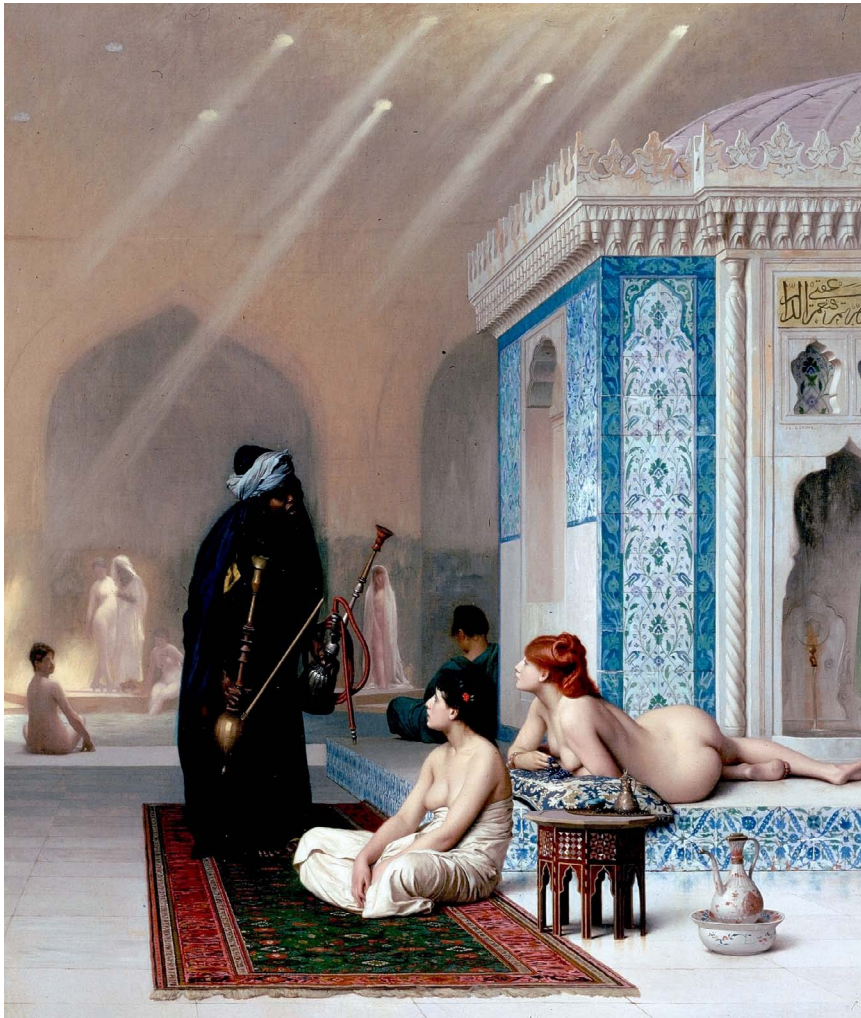
Woman of Algier (1833)
Museum of Fine Arts, Houston

**Women
of
Algiers
(1834)**
Louvre

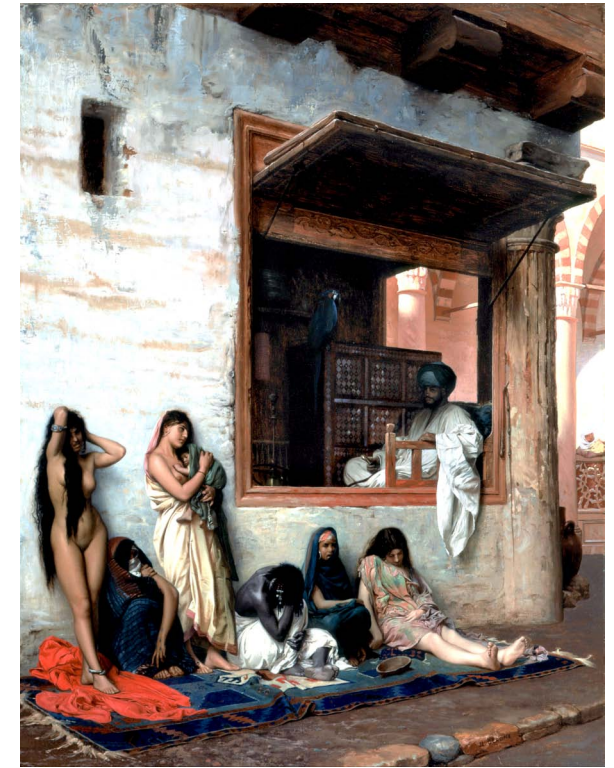
**Women
of
Algiers
in their
Quarters
(1847)**
Fabre
Museum



Jean -Leon- Gerome (1824-1904)



Slave Market (c1866) Clark Art Institute



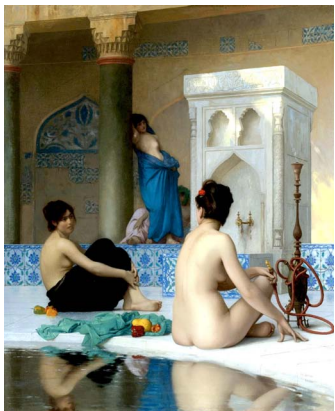
Slave Market (1871) Cincinnati Art Museum

**Pool in a
Harem
(c1876)**
Hermitage



After (c1876) Khanenko Museum **Great Bath**

Bathsheba (1889) CP



Jean-Jules-Antoine Lecomte du Nouÿ

(1842-1923)



**Ramsès
dans
son
harem**
(c1885)
Musée
d'Orsay



Favori de l'émir
(1879) National
Gallery of Art

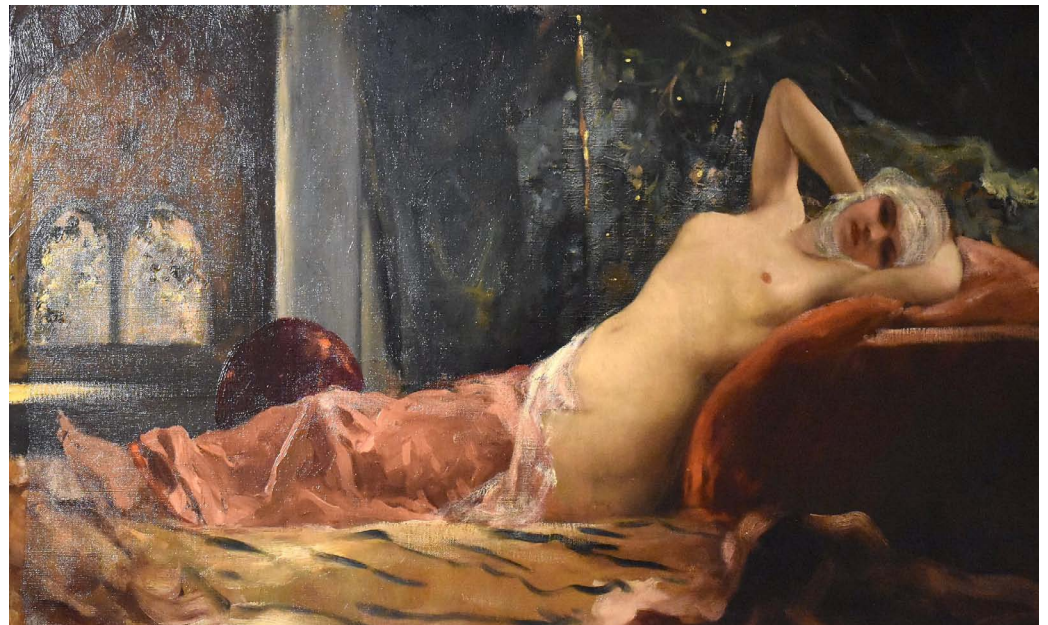
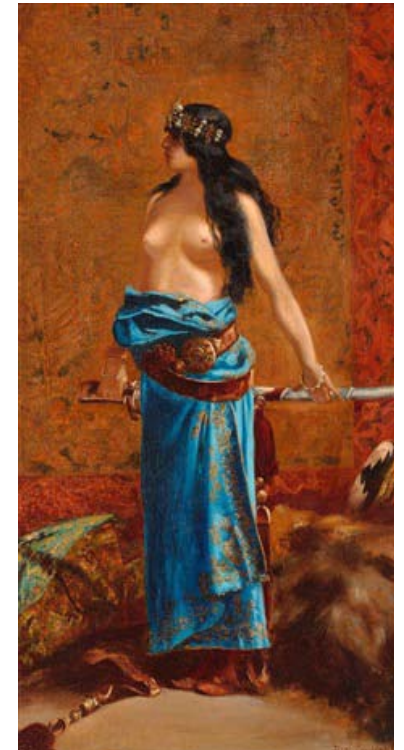
Judith
(c1886) CP

Benjamin -Constant, Jean -Joseph

(1845-1902)

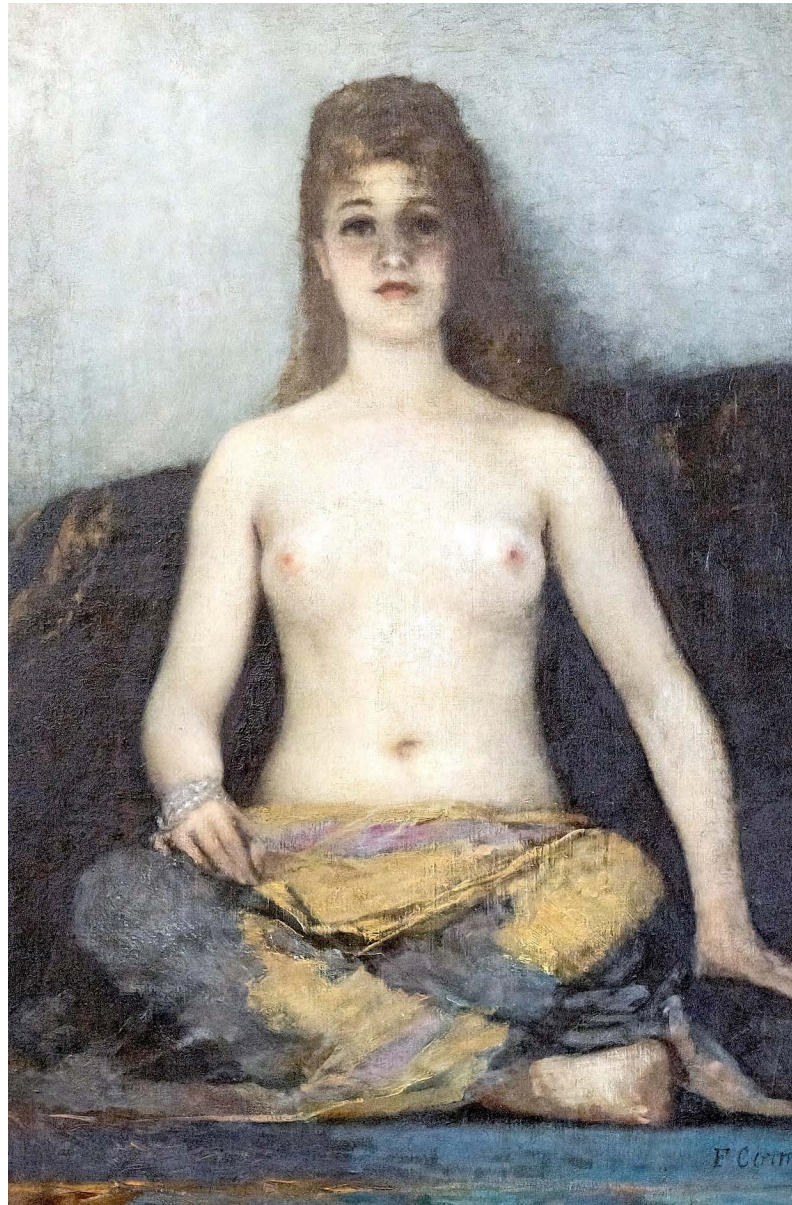
Odalisque (c1890) Musée d'art
et d'histoire de Narbonne

L'odalisque allongée (c1890)
Musée d'Orsay



Fernand Cormon

(1845-1924)



Nu (??) Musée d'Orsay



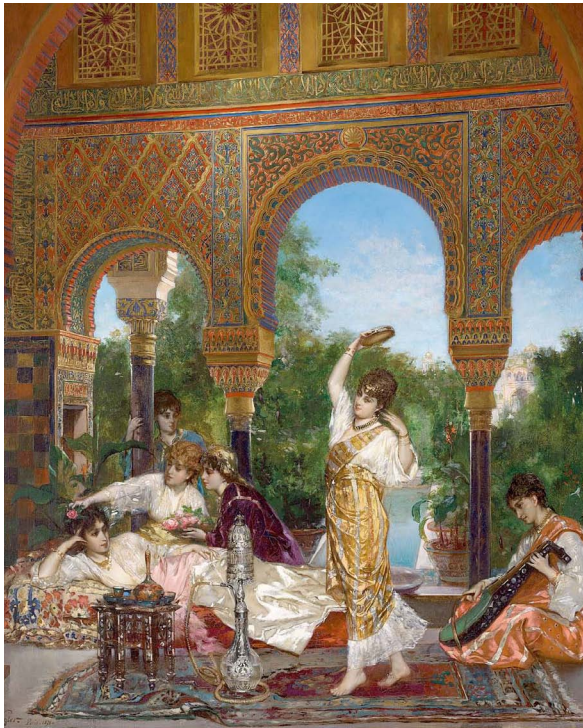
En
prévision
(??) CP

Student of Cabanel & Portaels Atelier Cormon - Pupils!

Jalousie au sérail
(1874) Musée des
Beaux-Arts et
d'Archéologie de
Besançon

Le harem (c1877)
Musée d'art et
d'histoire de
Narbonne





Dans le harem (??)
CP

Judith (1877)
Museum of Fine Arts Ghent

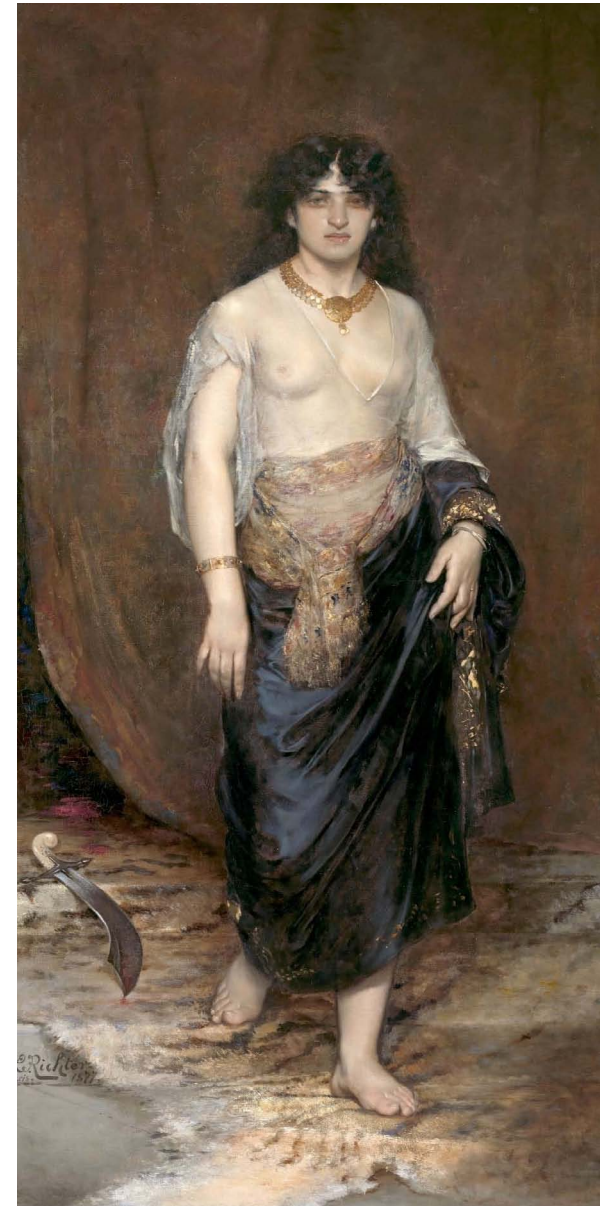


Femme orientale (c1875) Belvedere

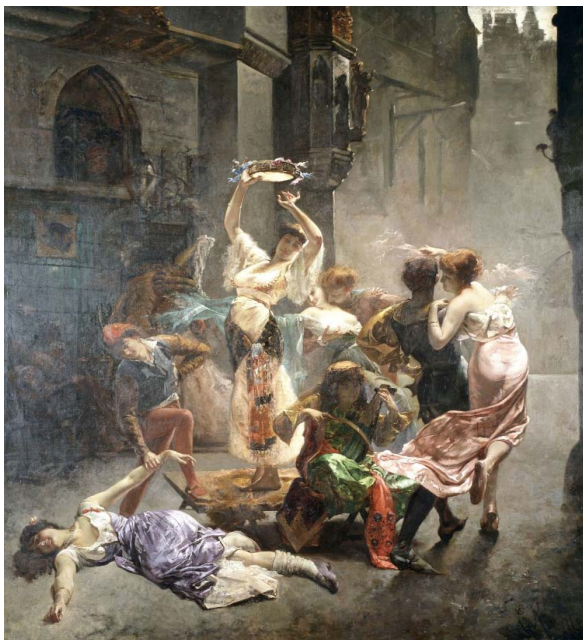
Édouard Frédéric Wilhelm Richter

Mendiants et putes (1877)
Museum of Fine Arts Ghent

(1856–1929)



German-French
Student of Hébert - Bonnat



Théodore Chasseriau (1856–1929)

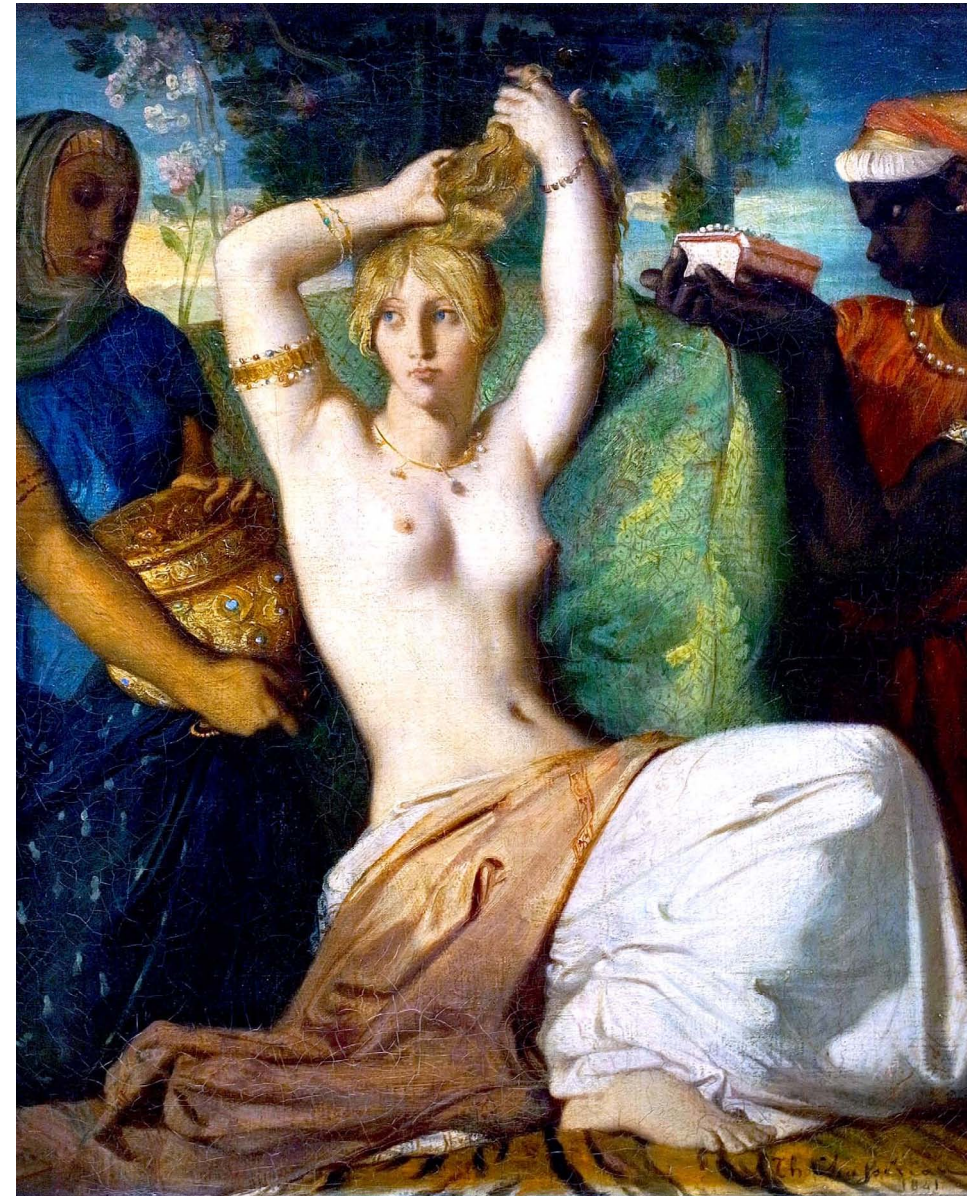


Orientalist
Interior: Nue a la
Harem
(c1850)
Musée d'Orsay

Femme mauresque
sortant du bain
(1854)
Musée des Beaux-
Arts de Strasbourg



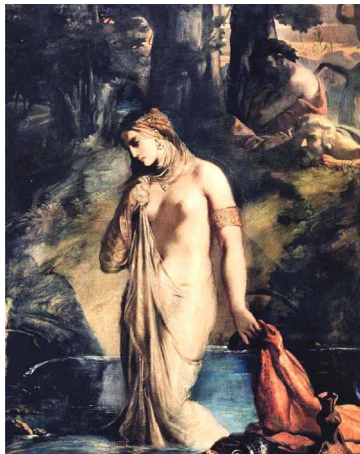
Suzanne au bain
(1839) Louvre



Esther se parant pour être présentée au roi Assuerus
(1841) Louvre Museum



Odalisque couchée
1853) CP

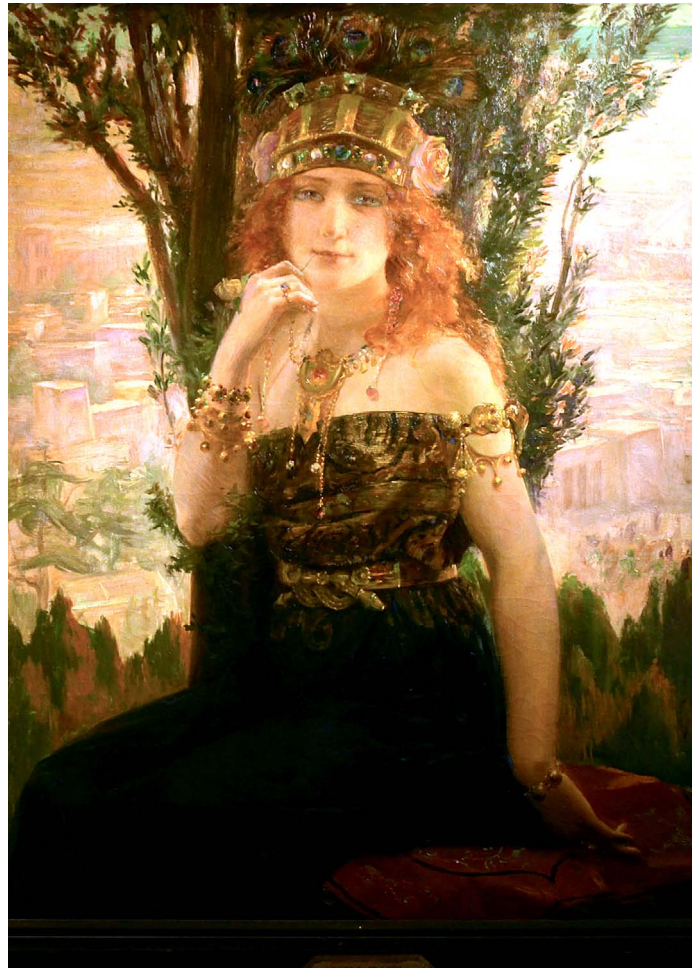


Gaston Bussière

Nymph (c1900) CP

(1862-1929)

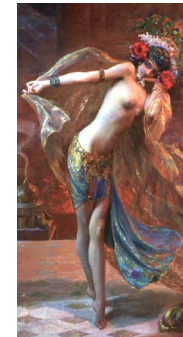
Tahoser (1886) CP



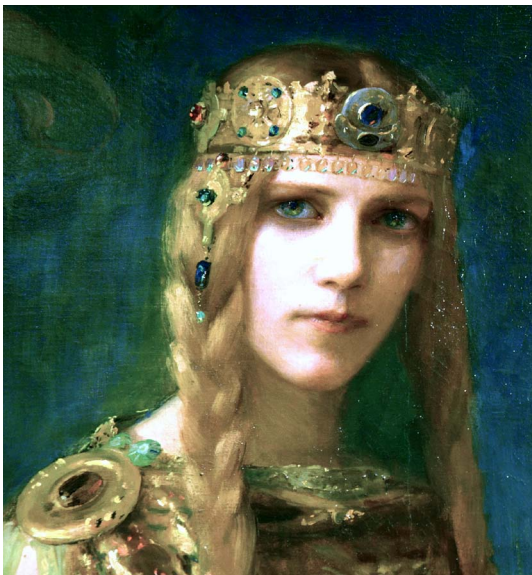
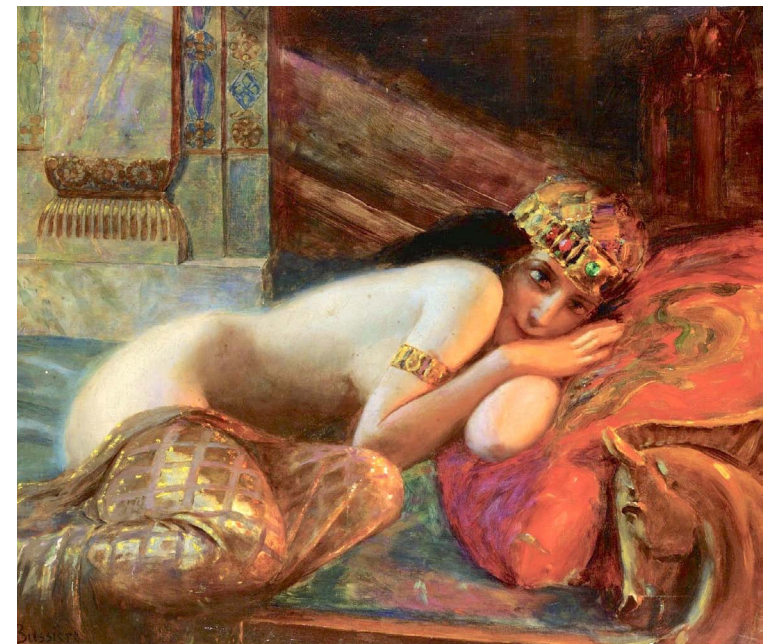
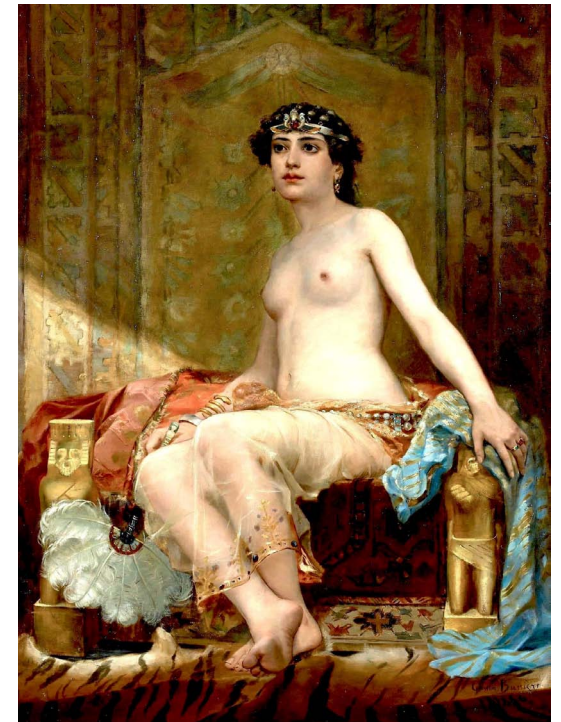
Helen of Troy (1895) Musée des Ursulines de Mâcon

Cup, Iseult (1911)
Musée des Ursulines
de Mâcon

Oriental Beauty
(????) CP



Dance of the Seven Veils
(1925) CP





Mirror (??) CP



Marie Rochegrosse in the Dining Room (1904) CP



Portrait of Sarah Bernhardt (??) CP



Blue Princess (??) CP



Reclining Beauty (??) CP



Idle Moments - Lion and Slave (??) CP

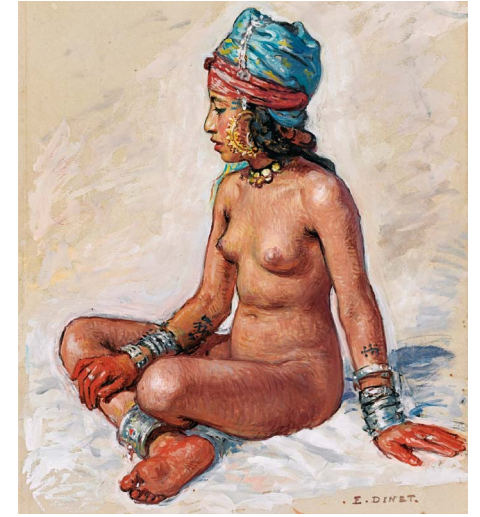
Georges Rochegrosse (1859-1938)



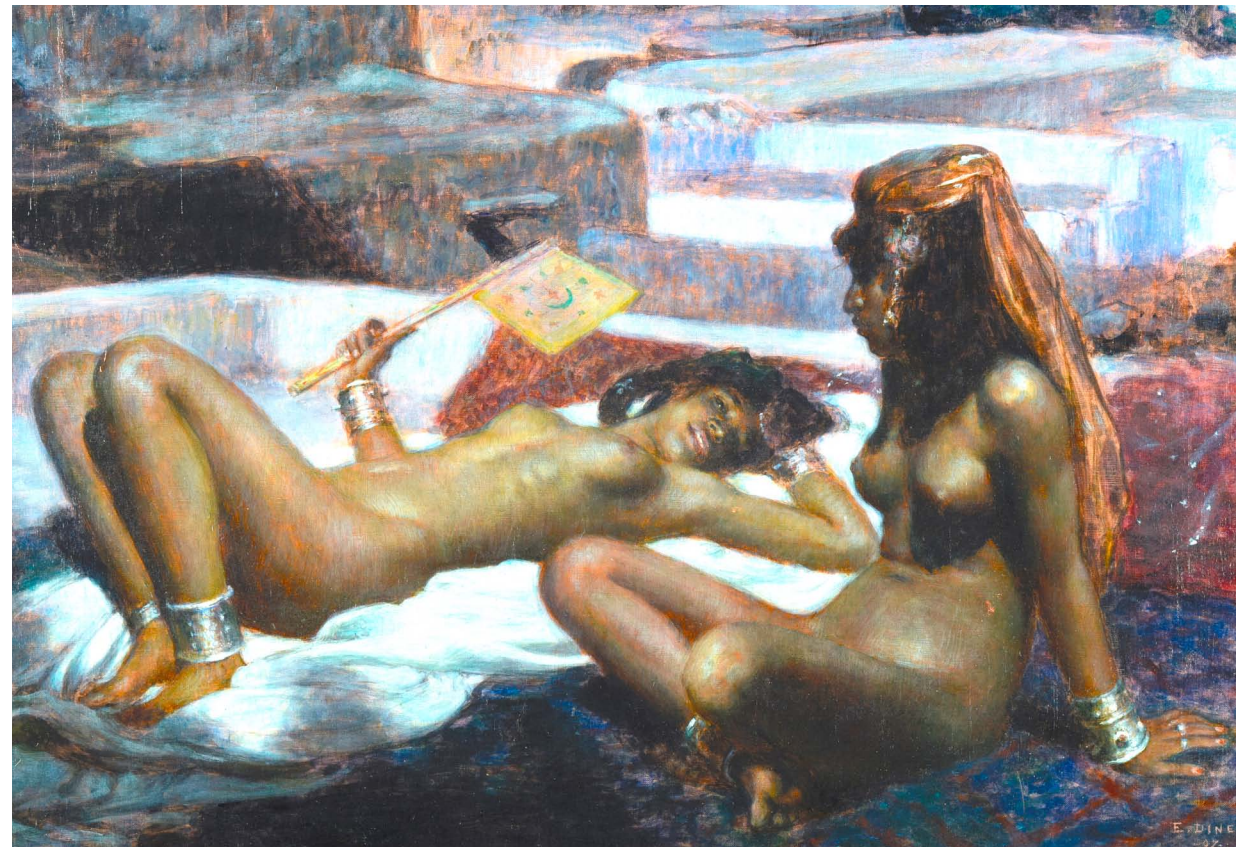
**Baigneuse
dans la
palmeraie
(1916) CP**

**Dance
de Nuit
(1891) CP**

**Sur les terrasses.
Clair de lune à
Laghouat (1908)
Museum of Fine
Arts of Reims**



**Esclave d'amour
(1900)
Musée d'Orsay**



Nasreddine Dinet (1861-1929)



Satan's Messenger (1908) Museo Nacional de Bellas Artes

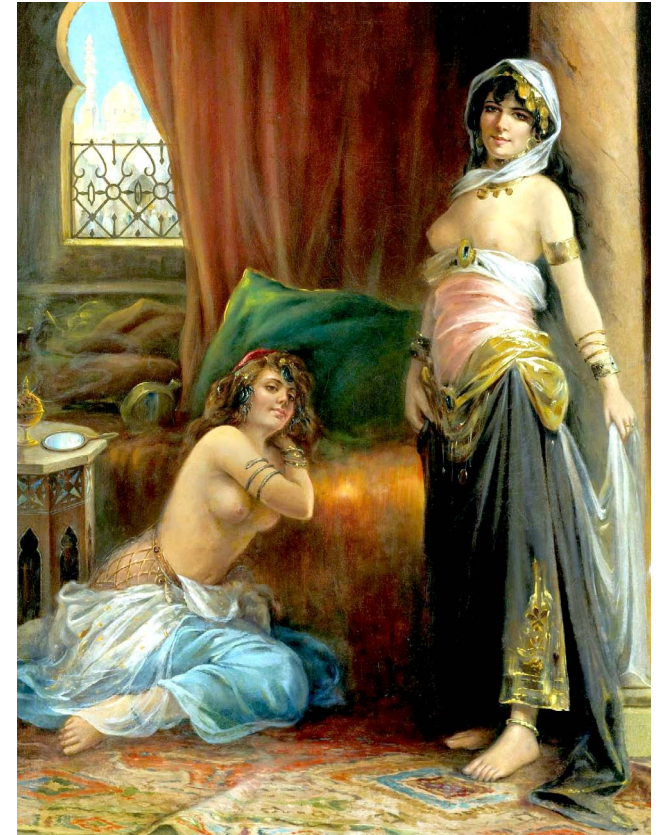
Henri Adrien Tanoux (1865-1923)



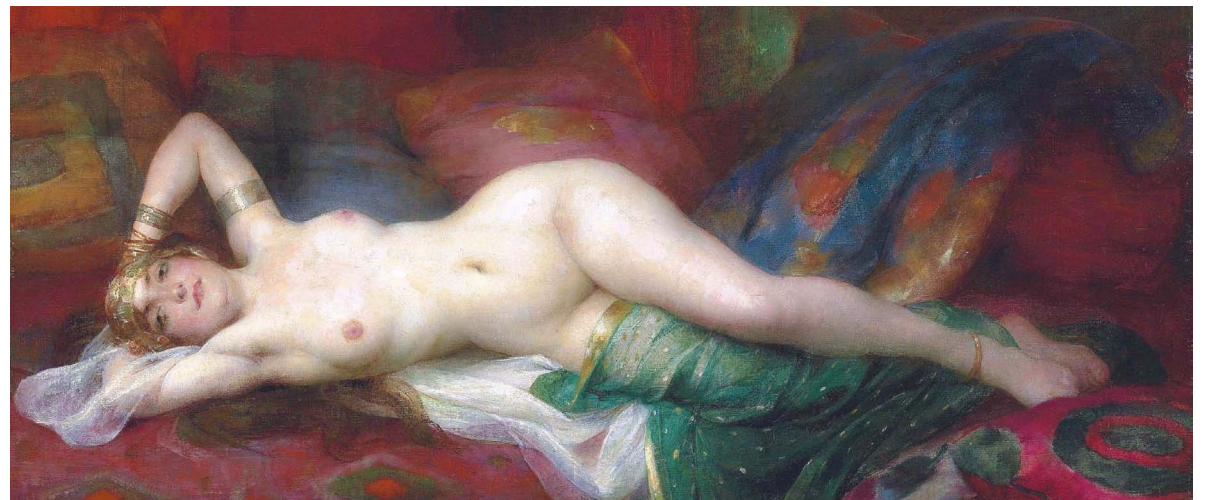
Nymphs in a Forest
(1898) CP



Afternoon Coffee (1888) CP



Harem Beauty (1921) CP



Odalisque
(1920) CP



Odalisques dans le Harem (c1910) CP

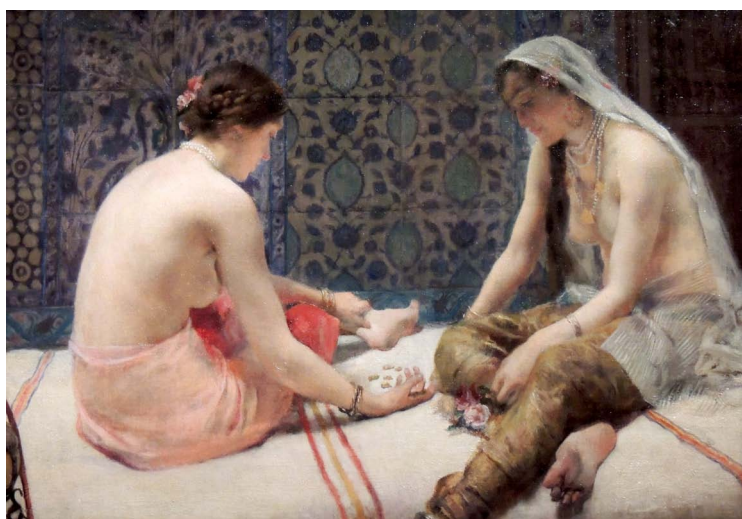
Maurice Bompard (1857-1935)



Esther à l'Odalisque (1844) Musée des Beaux-Arts de Pau

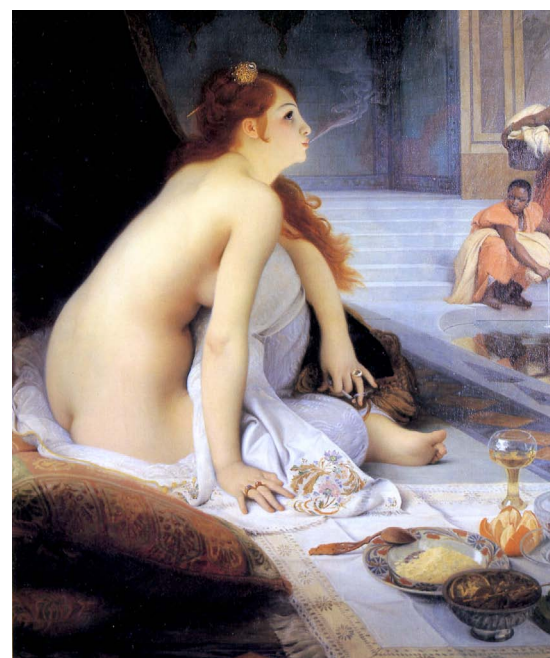
François-Léon Benouville

(1821-1859)



Le Jeu
d'osselets
(1862) CP

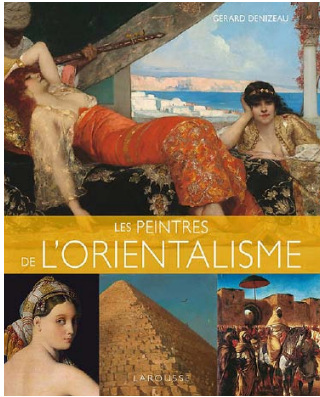
**Paul
Leroy**
(1860-1942)



**Jean-J-
Antoine
du Nouÿ**

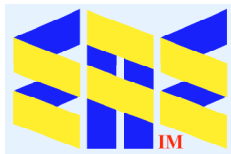
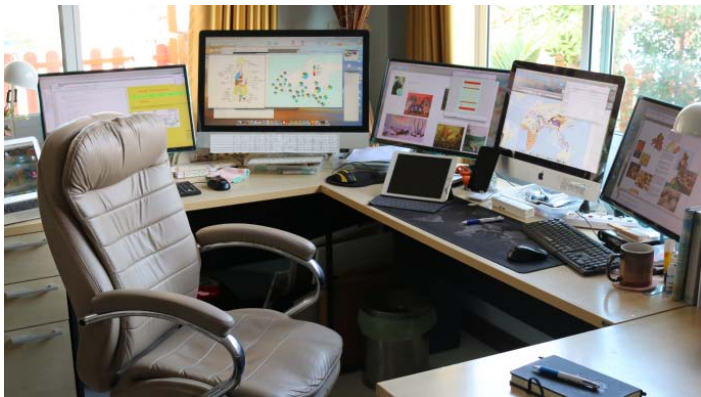
(1842-1923)

L'Esclave blanche
(1888) Musée des Beaux-Arts
de Nantes



Grateful acknowledgement is made to Wikipedia and Wikipedia Commons and all institutions and private individuals providing high quality access to copies of paintings in the public domain in countries where the copyright term is the author's life plus 70 years or fewer.

Catalogue



eacinternal.com

EurAsian Education (Internal)