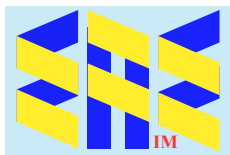


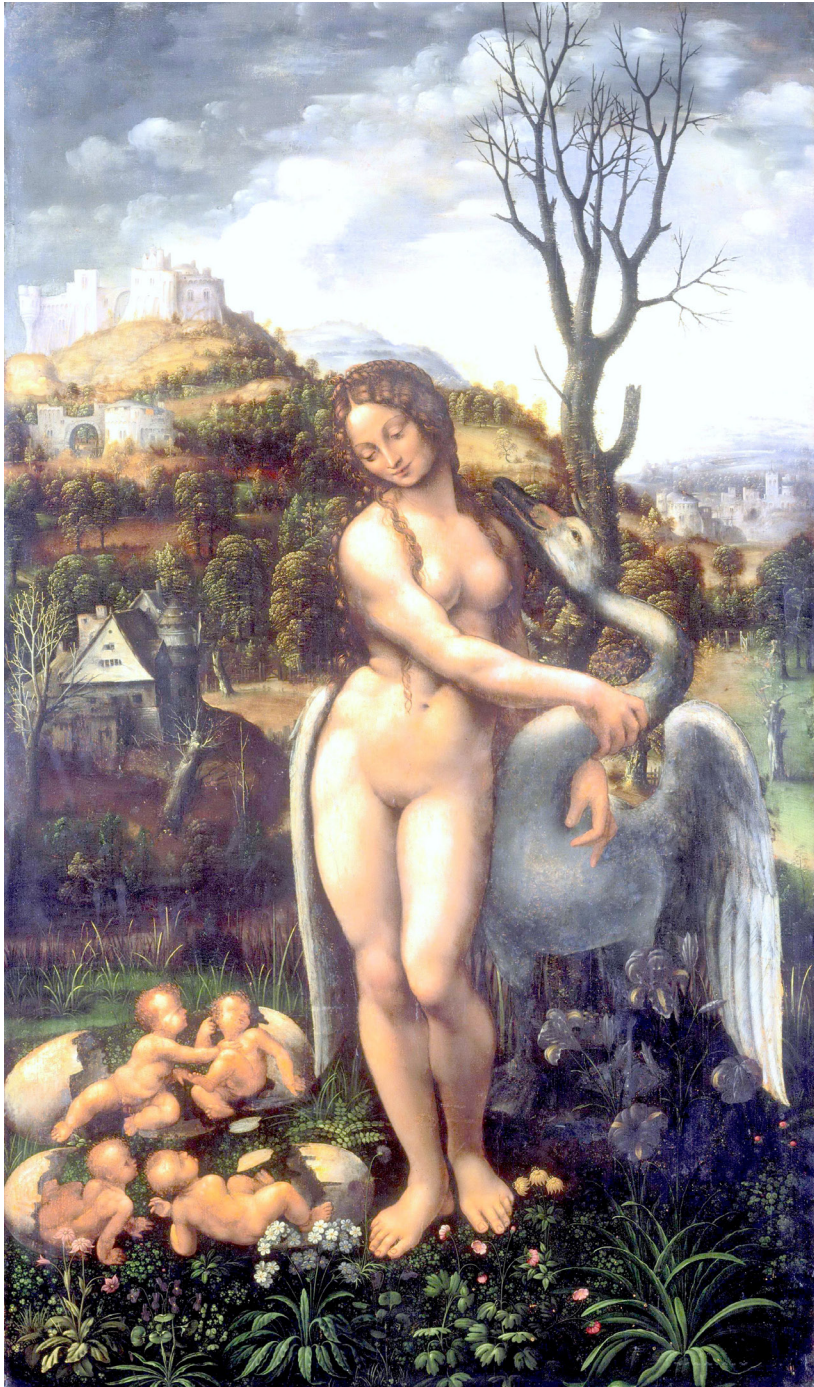
# Leda and the Swan



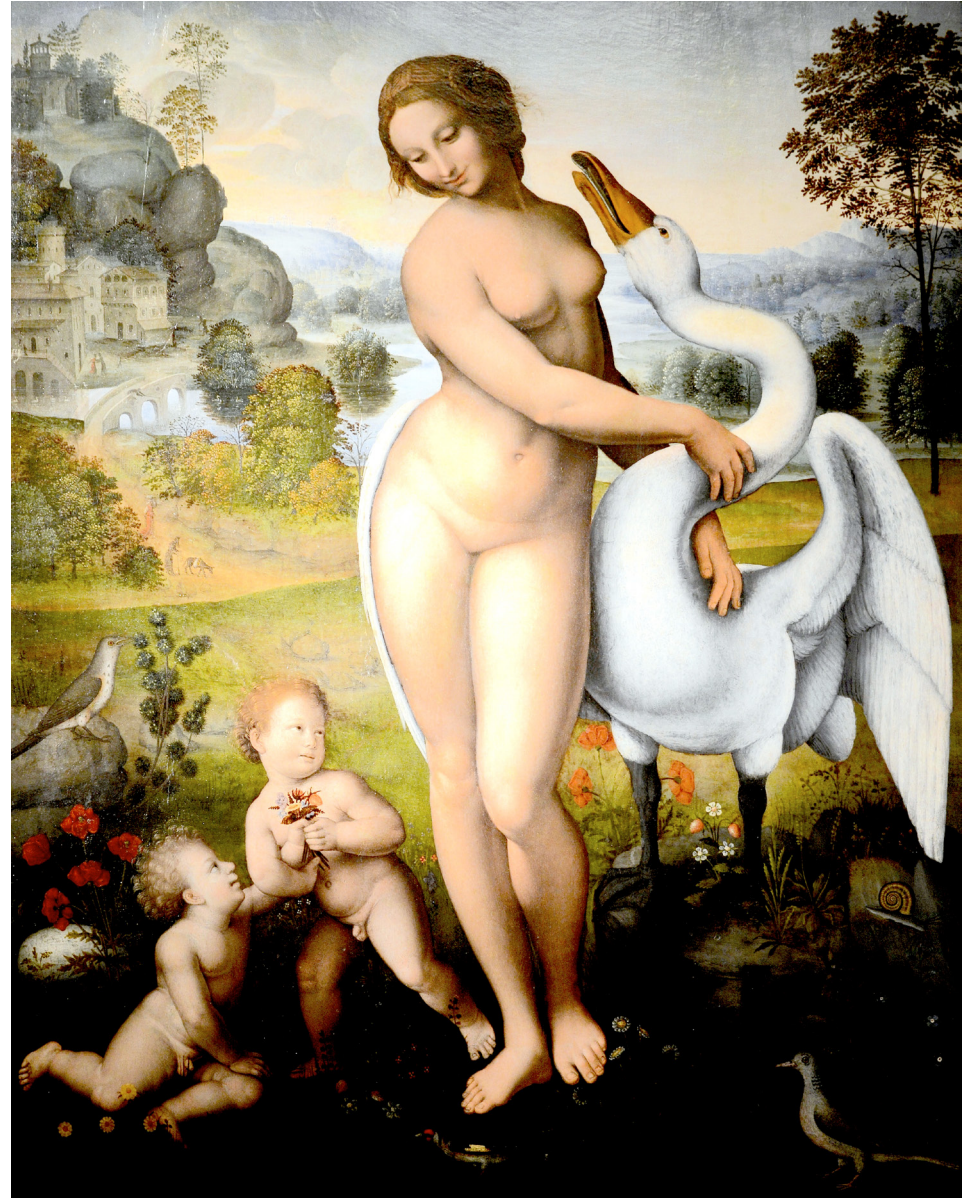
**Leda and the Swan (3rd C) Cyprus Museum, Nicosia**



**Compiled by Toon Senta**

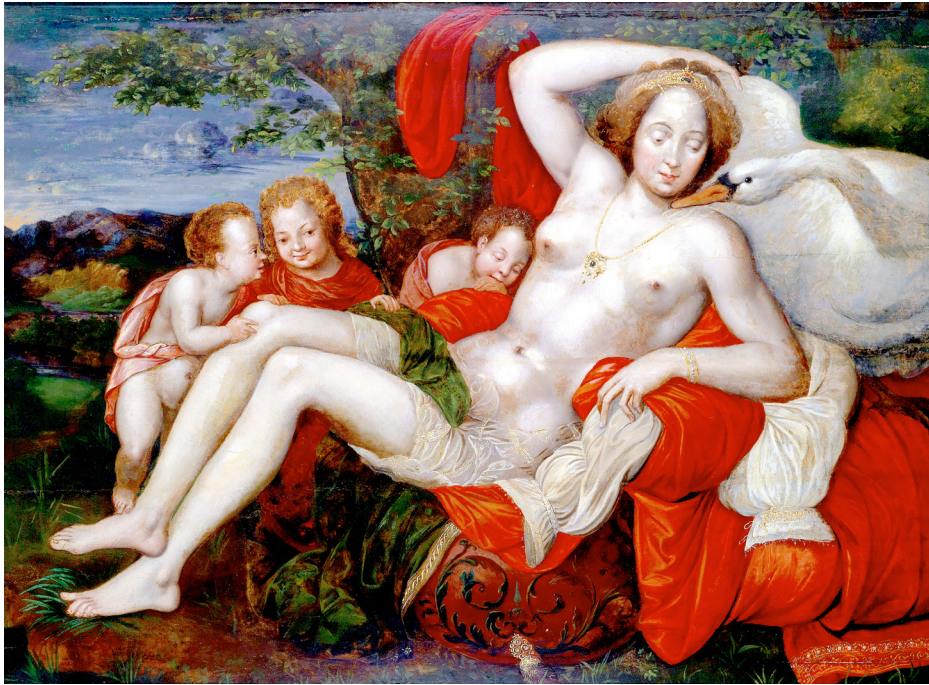


**Leda and the Swan** (1500s) Philadelphia Museum of Art **Anonymous**



**Leda and the Swan** (1510)  
Galleria Borghese

**Il Sodoma** (1477-1549)



Leda and the Swan (1500s) CP

**Vincent Sellaer** (1490-1564)



Leda and the Swan (c1532) Gemäldegalerie

Leda and the Swan (1500s) CP

**Georg Pencz**

(1500-1550)

**Antonio da Correggio** (1489-1534)

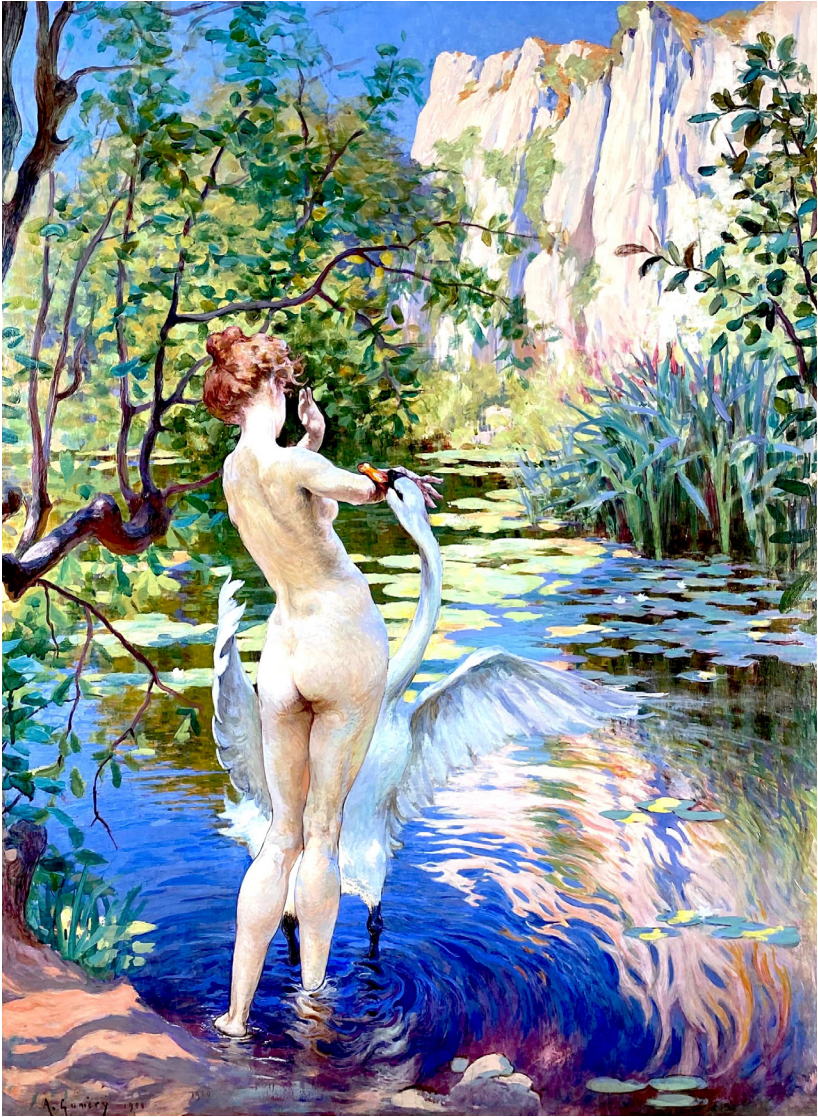




**Leda  
and the  
Swan**  
(1604)  
Museo  
del  
Prado

**Eugenio  
Caxés**  
(1574-1634)

**Wojciech Kossak** (1856-1942) L&S (1924) CP

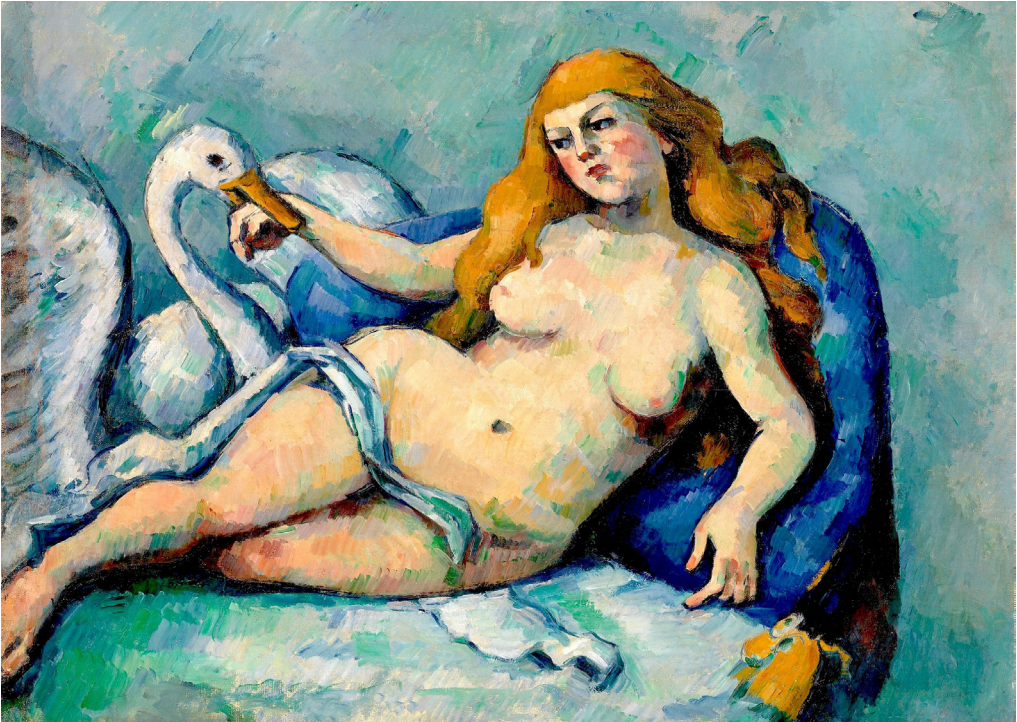
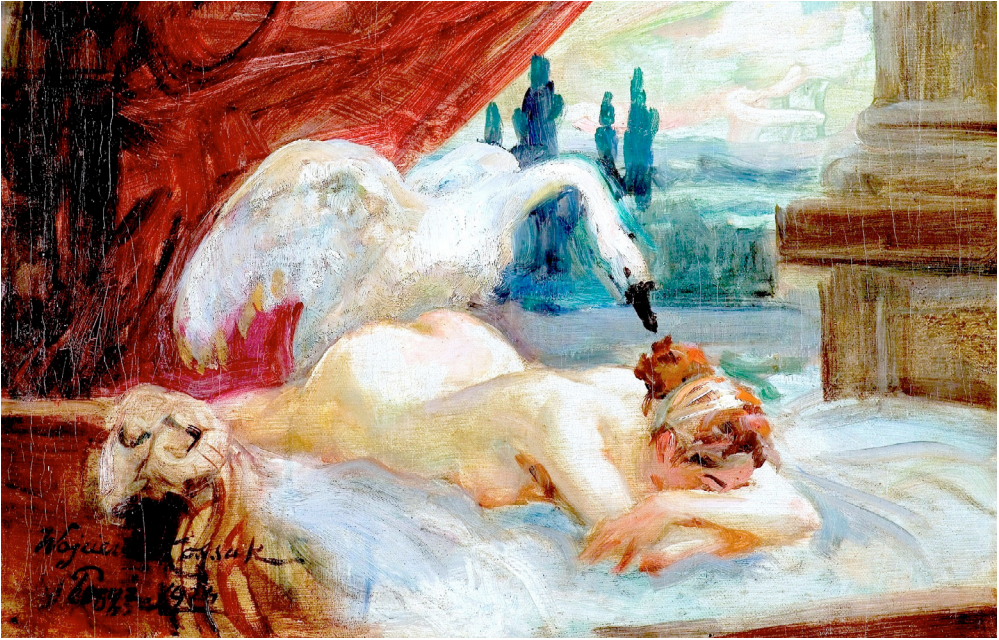


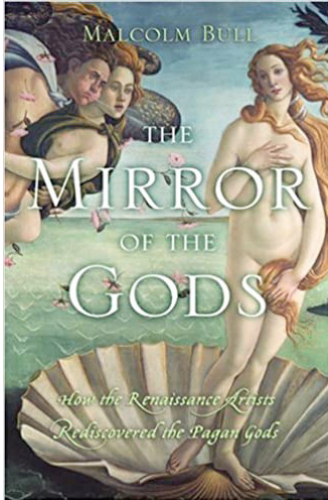
L&S (1900) CP

**Adolphe  
Gumery** (1861-1943)

**Leda and the Swan**  
(1880-82) Barnes Foundation

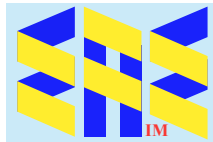
**Paul Cézanne** (1839-1906)





Grateful acknowledgement is made to Wikipedia and Wikipedia Commons and all institutions and private individuals providing high quality access to copies of paintings in the public domain in countries where the copyright term is the author's life plus 70 years or fewer.

Malcolm Bull (2005)



**EurAsian Education** (Internal)