

British Lands



Tudor/Stuart Female Portraits

(1525-1700)

Holbein (1497-1543)

Hilliard (1547-1619)

Peake (1551-1619)

Oliver (1556-1617)

Gheeraerts II (1561-1636)

Larkin (1580s-1619)

van Dyck (1599-1641)

Wright (1617-1694)

Lely (1618-1680)

Beale (1633-1699)

Kneller (1646-1723)



Compiled by Toon Senta

Peter Lely (1618-1680)



Self-Portrait (1677-80) CP



Compiled by Toon Senta

William Hogarth (1697-1764)



Self-portrait (c1735) Yale Center for British Art



Compiled by Toon Senta

Reynolds vs Gainsborough

(1723-1792) (1727-1788)



Self-Portrait (c1750)
Yale Center for British Art



Self-Portrait (c1758)
National Portrait Gallery



Compiled by Toon Senta

Angelica Kauffmann

(1741-1807)



Self-portrait (1784) Neue Pinakothek



Compiled by Toon Senta

William Turner

(1775-1851)



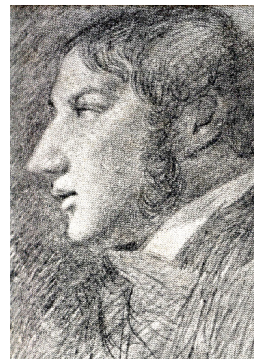
Self-portrait (1799) Tate Gallery



Compiled by Toon Senta

John Constable

(1776-1837)



Self-portrait (c1800) Fanghong/Gallery



Compiled by Toon Senta

William Etty (1787-1849)



Self-Portrait (1823) Yale Center for British Art



Compiled by Toon Senta

Richard Parkes Bonington (1802-1828)



Portrait (Margaret Sarah Carpenter c1827)
National Portrait Gallery



Compiled by Toon Senta



Society of Arts (19th C)

Academy of St Luke (1711) Godfrey Kneller

Free Academy (1720s) James Thornhill

St Martin's Lane Academy (1720) Vanderbank and Chéron

St Martin's Lane Academy (1735) William Hogarth

Foundling Hospital Exhibitions (1746<) William Hogarth

Society for the Encouragement of Arts, Manufactures and Commerce (1754-Present) William Shipley

Free Society of Artists (1760) **Society of Artists of Great Britain (1760)**

Incorporated Society of Artists of Great Britain (1765)

Royal Academy of Arts (1769-Present) Joshua Reynolds

Royal Academy Exhibition of Contemporary Art (1769-Present)



Royal Academy of Arts (William Shipley 19th C)

Pall Mall 1769-1771 Somerset House (1711-1780)

New Somerset House (1780-1837)

National Gallery (1837-1868)

Burlington House (1868-Present)

Academies / Societies

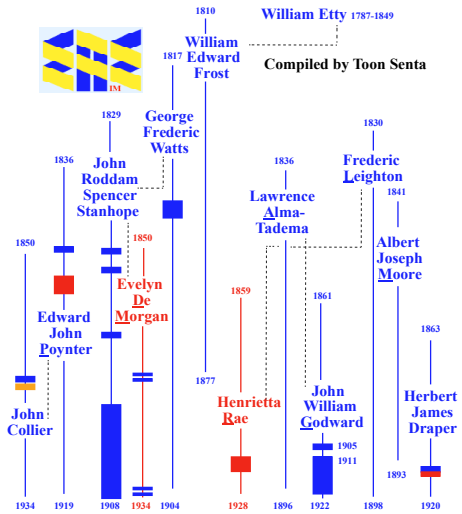


A Life Class at St Martin's Lane Academy (Johann Zoffany 1761-62) Royal Academy of Arts



Exhibition Room at Somerset House (Rowlandson et al 1808)

Neo-Classical Nudes Britain



Frederic Leighton (1830-1896)



Self-portrait (1880) Uffizi



Compiled by Toon Senta

Lawrence Alma-Tadema (1836-1912)



(1870) Gift of Charles Scribner's Sons



Compiled by Toon Senta

Edward Poynter (1836-1919)



Portrait (Legros c1890) CP



Compiled by Toon Senta

Albert Joseph Moore (1841-1893)



(c1870)



Compiled by Toon Senta

Evelyn De Morgan (1855-1919)



De Morgan Collection



Compiled by Toon Senta

Henrietta Rae (1859-1928)



Compiled by Toon Senta

John William Godward (1861-1922)



(c1900)



Compiled by Toon Senta

Herbert James Draper (1863-1920)



(c1900)



Compiled by Toon Senta

Realism-Expressionism England (1880-1920)

George Clausen (1852-1944)
John Singer Sargent (1856-1925)
Stanhope Forbes (1857-1947)
Frank Bramley (1857-1915)
Henry Scott Tuke (1858-1929)
Henry Herbert La Thangue (1859-1929)
Walter Richard Sickert (1860-1942)
Robert Bevan (1865-1925)
Harold Gilman (1876-1919)
Spencer Gore (1878-1914)
William Orpen (1878-1931)
Malcolm Drummond (1880-1945)



Compiled by Toon Senta

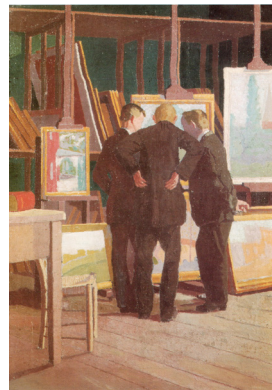
Realism-Expressionism Scotland (1880-1920)

William McTaggart (1835-1910)
James Paterson (1854-1932)
William York MacGregor (1855-1923)
Sir John Lavery (1856-1941)
George Henry (1858-1943)
Edward Arthur Walton (1860-1922)
Margaret MacDonal (1864-1933)
Edward Atkinson Hornel (1864-1933)
Elizabeth MacNicol (1869-1904)
Samuel John Peploe (1871-1935)
Frances MacDonal (1873-1921)
John Duncan Fergusson (1874-1961)
Leslie Hunter (1877-1931)
Francis Cadell (1883-1937)



Compiled by Toon Senta

Camden Town and Beyond



19 Fitzroy Street (c1913-14) Laing Art Gallery



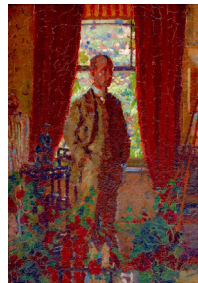
Compiled by Toon Senta

Allied Artists Association (1908-1914)

Sickert (1860-1942)
Pissarro (1863-1944)
Bevan (1865-1925)
Bayes (1869-1956)
Hudson (1869-1957)
Ratcliffe (1870-1955)
Sands (1873-1962)
Gilman (1876-1919)
Ginner (1878-1952)
Gore (1879-1914)
Manson (1879-1945)
Drummond (1880-1944)
Hamnett (1890-1956)

Fitzroy Street
(1907-1913)
Camden Town
(1911-1913)
London
(1913-Present)

Harold Gilman (1876-1919)



Self-portrait (c1910) Tate Gallery



Compiled by Toon Senta

Walter Richard Sickert (1860-1942)



Self-portrait (1907)
Southampton City Art Gallery



Compiled by Toon Senta

Spencer Gore (1878-1914)



Self-Portrait (1914) National Portrait Gallery



Compiled by Toon Senta

Robert Bevan (1865-1925)



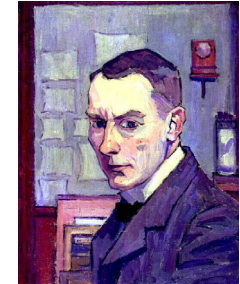
(c1915) Colourman

London Group

Cumberland
Market Group



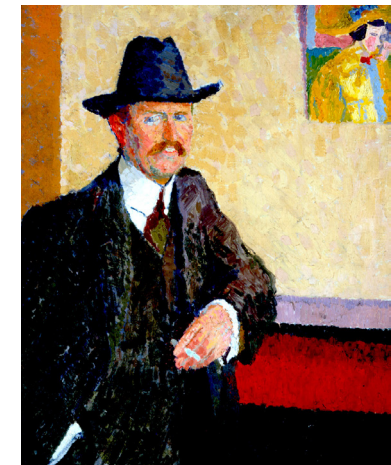
Pont-Aven School
Camden Town Group



Self-portrait (c1914)
National Portrait Gallery

Compiled by Toon Senta

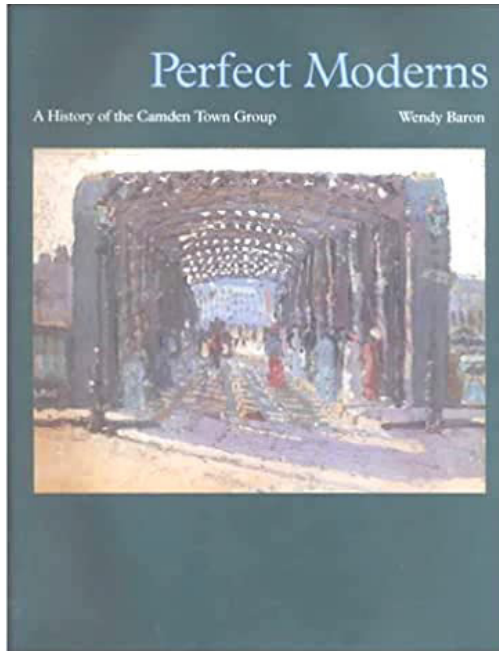
Charles Ginner (1878-1952)



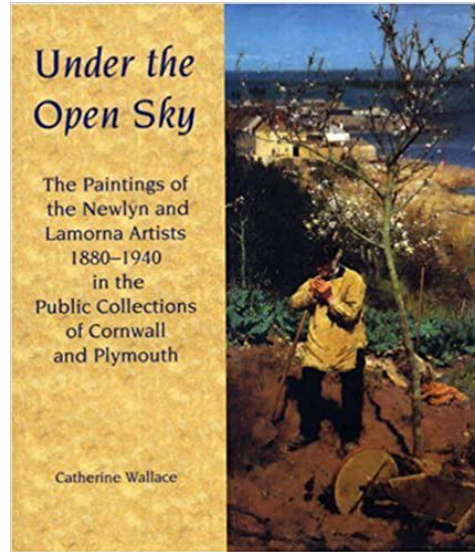
Portrait (Drummond 1911) Southampton City Art Gallery



Compiled by Toon Senta



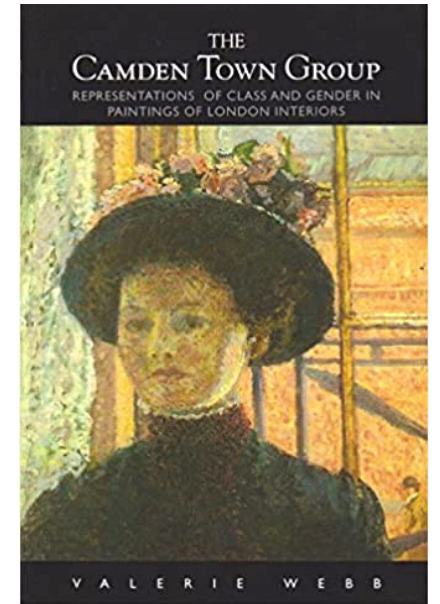
(2000) Wendy Barron



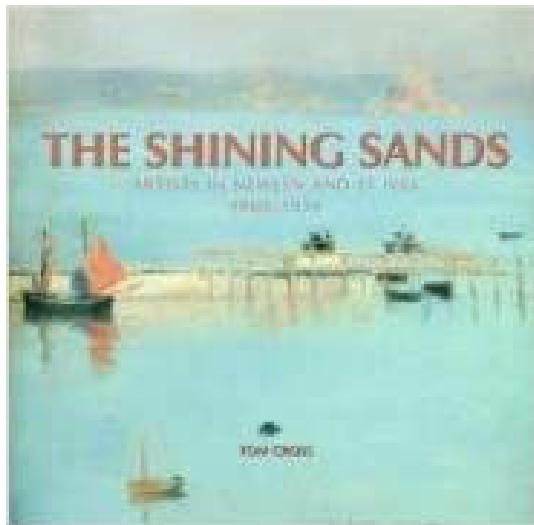
(2002) Catherine Wallace



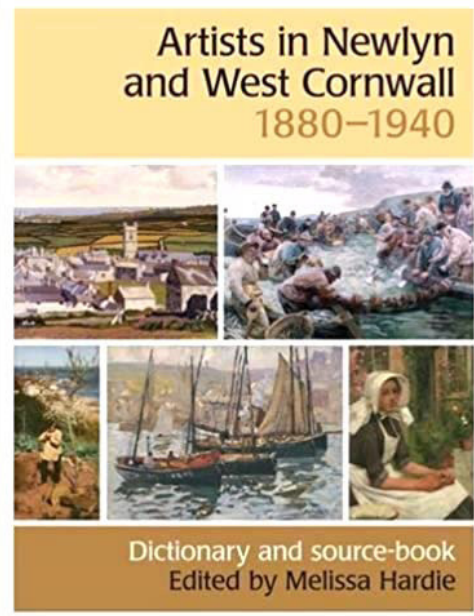
(2006) Kenneth McConkey



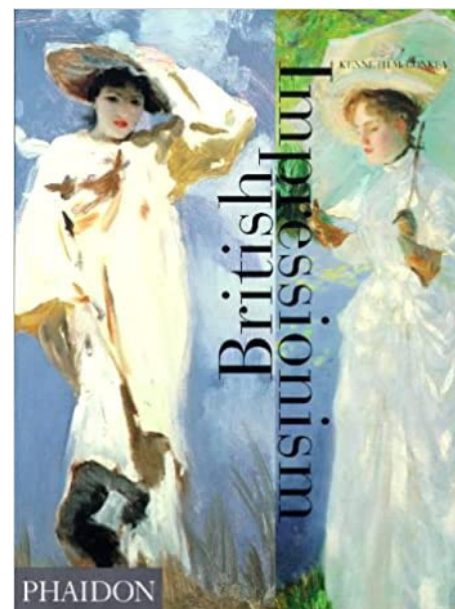
(2007) Valerie Webb



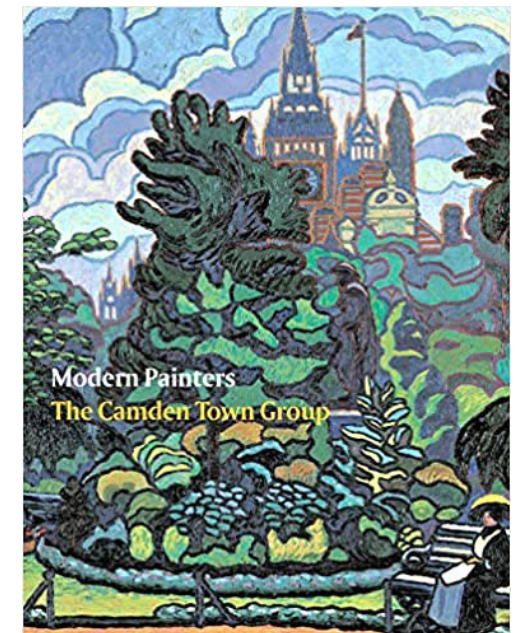
(2008) Tom Cross



(2009) Melissa Hardie

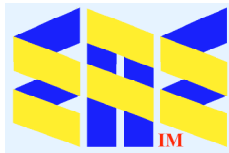


(1998) Kenneth McConkey



(2008) Robert Upstone

Royal Society of British Artists (1823-Present)
Pre-Raphaelite Brotherhood (1848-1853)
Slade School of Fine Art (1871-Present)
New English Art Club (1885-Present)
Newlyn School (1880s-1900s)
Allied Artists Association (1908)
‘Manet and the Post-Impressionists’ (1910-11)
Camden Town Group (1911-13)
‘Second Post-Impressionist Exhibition’ (1912)
Omega Workshops (1913-19)
London Group (1913-Present)



EurAsian Education (Internal)